

RFP ADDENDUM
RFP-18 Rev. 5/17/12
Prev. Rev. 4/16/12

STATE OF CONNECTICUT
DEPARTMENT OF ADMINISTRATIVE SERVICES

Aimee Cunningham
Buyer Name

(860)713-5250
Buyer Phone Number

PROCUREMENT DIVISION
165 Capitol Avenue, Room 5th Floor South
HARTFORD, CT 06106-1659

RFP NO.: 12PSX0323

Proposal Due Date: 13 December 2012
--

Date Addendum Issued: 19 October 2012
--

PLEASE NOTE:

This document has been marked as “Returnable”. Electronic submittal of this document indicates that your company has read and accepted any modifications to the RFP that are contained in this Addendum.

RFP ADDENDUM #1

DESCRIPTION: Procurement, Installation, and Integration of a Bus Intelligent Transportation System (ITS) for the Connecticut Department of Transportation

FOR:
Department of Transportation/Connecticut Transit Authority

PROPOSERS NOTE:

The purpose of this Addendum is to:

- **Include the sign-in sheet from the Pre-Proposal presentation**
- **Include Instruction on how to create a Biznet account which will be required to upload Proposal submissions**
- **Include a schedule for optional site visits at the bus dispatch locations referred to on page 15 of the RFP document**
- **Include the slides from the Pre-Proposal presentation**

12PSX0323 Procurement, Installation, and Integration of a Bus Intelligent Transportation System (ITS)
for the CTDOT

Pre-Proposal Presentation, DOT Headquarters, 2800 Berlin Turnpike, Newington, CT
October 12, 2012 at 9:30 am, Rooms A & B

Sign in Sheet

NAME	COMPANY REPRESENTING	PHONE AND EMAIL
1) Mike Szalay	Clever Devices	516 4336100 msz@cleverdevices.com msz@cleverdevices.com
2) Charles Mitchell	Clever Devices	516 4336100 cmitchell@cleverdevices.com
3) Blake Streeter	XEROX / ACS	410-952-6573 Blake.Streeter@Xerox.com
4) Eric Brownman	XEROX	631-294-2981 eric.Brownman@xerox.com
5) Chuck Angell	Rite-Solutions	401-847-3399 ext 118 cangell@rite-solutions.com
6) Daniel Malerke	OAS Procurement	860-710-5627 daniel.malerke@oas.gov
7) Seth Fox	ORACLE	617-417-4373 Seth.Fox@oracle.com
8) Larry Rosenheim	Next Bus	510-995-3217 larryr@nextbus.com
9) ANUSH NEJAD	KIMLEY-HORN	646-839-4563 anush.nejad@kimley-horn.com
10) Maria Waddy	Xerox	443-259-7391 maria.waddy@xerox.com
11) Lisa Solecki	RJR Communications	860.659.9634 lisa@jrcommunications.net
12) Brendan Samis	Trapeze	416.471.7036 Brendan.Samis@trapezegrp.com
13) Tony Kendall	Trapeze	3A.899.2504 tony.kendall@trapezegrp.com
14) Tom Arabudzi	Scheidt & Balkin	781-353-1904 TArabudzi@S-B-USA.com

12PSX0323 Procurement, Installation, and Integration of a Bus Intelligent Transportation System (ITS)
for the CTDOT

Pre-Proposal Presentation, DOT Headquarters, 2800 Berlin Turnpike, Newington, CT
October 12, 2012 at 9:30 am, Rooms A & B

15)	Lauren Marotta	Johnson Controls	8604615409 Lauren.e.Marotta@jci.com
16)	Jeff Cohn	CLeven Devices	617 5124151 jcohn@clevedevices.com
17)	Mary Matuszak	ConnDOT	800-594-2342 mary.matuszak@ct.gov
18)	James Sorensen	IBI Group	617-450-0701 jsorensen@ibigroup.com
19)	Aimee Cunningham	Dept. of Admin Services Procurement	860 713-5250 aimee.cunningham@ct.gov
20)	Brian Cunningham	CT DOT	860 574 3198 brian.cunningham@ct.gov
21)	Jeff Bobrowski	Siemens	860-638-9423 jeffrey.bobrowski@siemens.com
22)	Andrew Rist	Siemens	978 262 9010 andrew.rist@siemens.com
23)	Dmitriy Yermolin	Fibre Optic Plus	860.646.3581 BRATSKIY.TECH@GMAIL.COM
24)	Jim Sinfay	Siemens	860 754-1296 jim.sinfay@siemens.com
25)	Rick Murray	G4S Technology	RICK.MURRAY@USA.G4S.COM 860 685 8293
26)	Raymond Royandoyan	TRANSSCOPE	raymond.royandoyan@transcope.com (212) 629-8380 x213
27)	Robert Kennedy	CT DOT Highway Ops	robert.kennedy@ct.gov 860-594-3458
28)	Richard Louder	CT DOT Highway Ops	richard.louder@ct.gov 860-594-3458
29)	Michael Sanders	CT DOT Public Trans	860 594-2829 michael.sanders@ct.gov
30)			

12PSX0323 Procurement, Installation, and Integration of a Bus Intelligent Transportation System (ITS)
for the CTDOT

Pre-Proposal Presentation, DOT Headquarters, 2800 Berlin Turnpike, Newington, CT
October 12, 2012 at 9:30 am, Rooms A & B

31)	Lisa Rivers	CTDOT Public Trans	860 594 2834 Lisa.Rivers@ct.gov
32)	Len Luciani	CTTRANSIT	860 522 8101 lluciani@CTTRANSIT.com
33)	Andy Celli	MOTOROLA SOLUTIONS	860 675 4896 ANDREW.CELLI@MOTOROLASOLUTIONS.com
34)	Alain Amar	Johnson Controls	201-421-8992 Alain.amar@jci.com
35)	GREG LASSITER	M BAKER	860 558 0629 GREG.LASSITER@MBAKERCORP

Ritesh Wavade . IBI Group.

617.450.0701
ritesh.wavade@ibigroup.com

Jeff Bergsten M. Baker

717.525.1744
jbergsten@mbakercorp.com

Jacob Argiro CME

860.290.4100

John Korte Conn DOT

jargiro@cmeengineering.com
860-594-3459
John.Korte@CT.gov

BizNet Connection

This page can be found on our website at: <http://das.ct.gov/cr1.aspx?page=372>

BizNet is a central collection area and informational tool for companies looking to do business with the State of Connecticut.

It is now a requirement of DAS/Procurement Services that all suppliers and prospective suppliers create a business network account (BizNet) by adding a company profile in our BizNet system. Companies that are currently certified through the DAS Supplier Diversity and DAS Construction Contractor Pre-Qualification Programs already have active accounts in BizNet and will have the ability to access and update their company information electronically.

Create and Manage Your BizNet Account Here

As a result of Public Act 11-229, DAS/Procurement Services' goal is to make doing business with the State of Connecticut more business friendly. To eliminate redundancy, forms that were repetitively filled out with each Invitation to Bid or Request for Proposal (RFP) are being automated in BizNet.

DAS/Procurement Services is also beginning the transition to on-line bidding by automating completion of Affidavits and Procurement forms. Companies will submit forms electronically and on an annual basis will be able to update online rather than with each submittal. This information will reside in the BizNet database and will be accessible for viewing . DAS/Procurement Services expects to automate additional forms as the on-line transition continues.

Click on the link below to register your company, complete Affidavit and Non-Discrimination forms, or update company information.

<https://www.biznet.ct.gov/AccountMaint/Login.aspx>

Schedule for optional site visits at the bus dispatch locations referred to on page 15 of the RFP document:

<u>Location</u>	<u>Address</u>	<u>Town</u>	<u>Date</u>	<u>Time</u>
CT Transit Stamford	26 Elm Court	Stamford, CT	11/1/2012	11:00 AM
North East Transportation	1717 Thomaston Ave	Waterbury, CT	11/1/2012	1:30 PM
CT Transit Hartford	100 Leibert Road	Hartford, CT	11/2/2012	10:00 AM
CT Transit Hamden	2061 State Street	Hamden, CT	11/2/2012	12:00 PM
New Britain Transportation	257 Woodlawn Road	Berlin, CT	11/2/2012	2:00 PM
Dattco	583 South Street	New Britain, CT	11/2/2012	2:30 PM

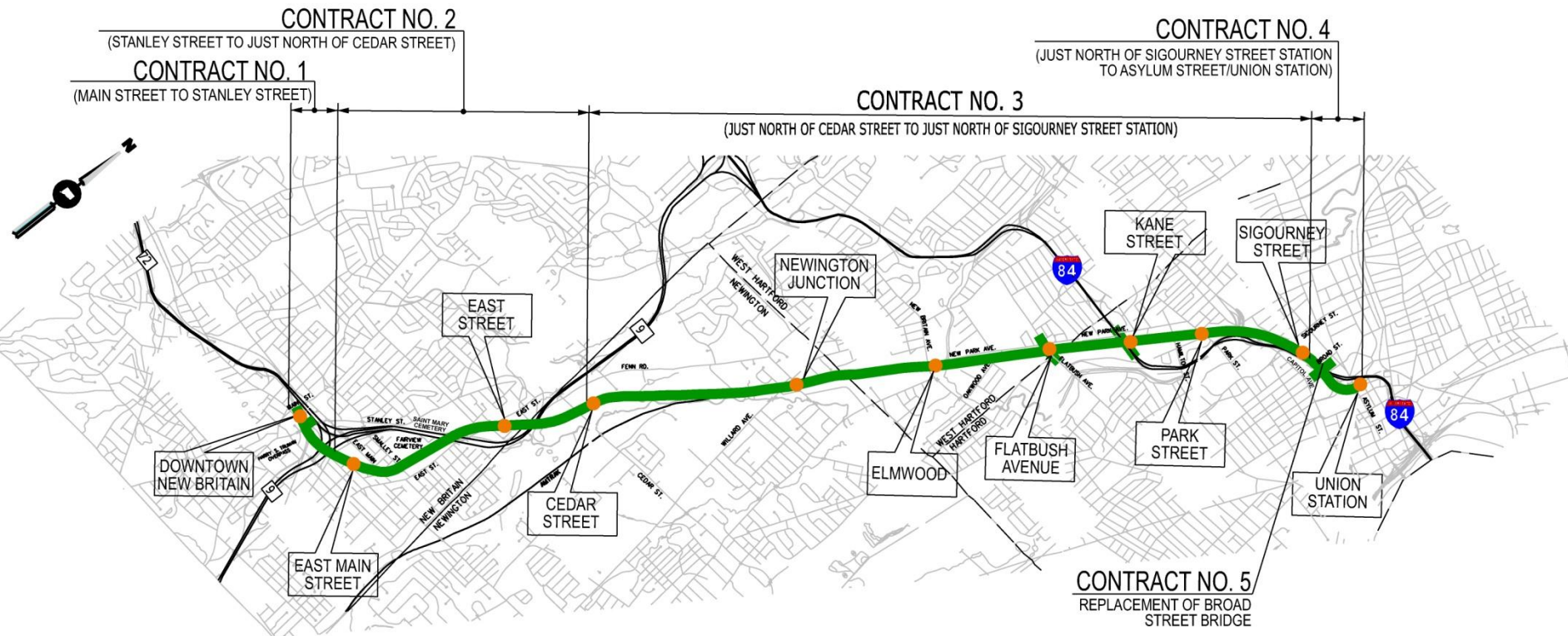
CTfastrak

ITS Pre-Proposal Conference

October 12, 2012

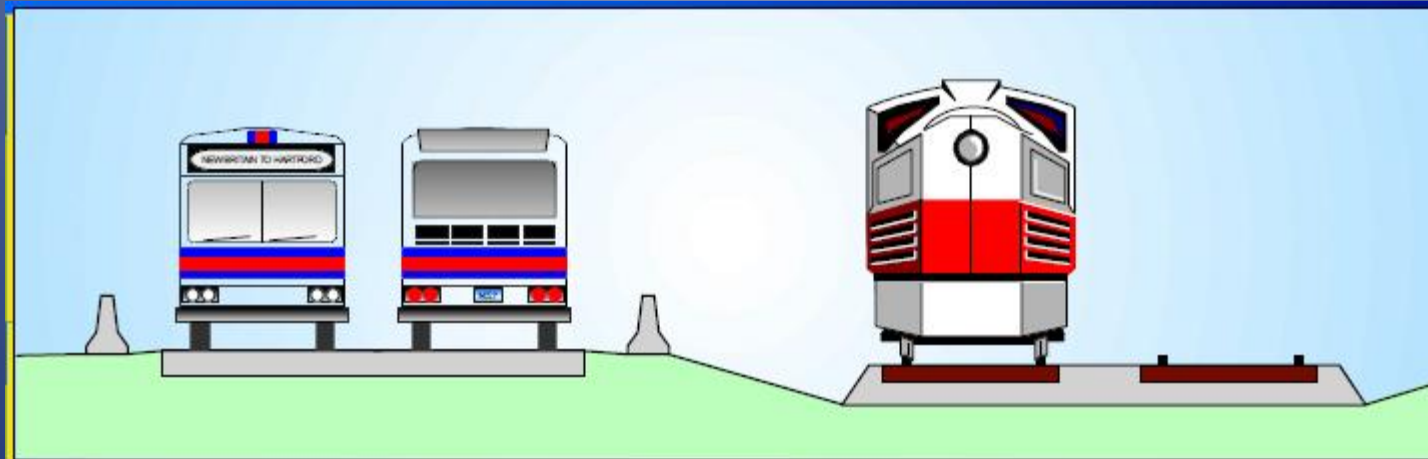


- Program Overview



Major Program Elements

- Exclusive Busway facility along 9.4 mile corridor
- 11 Transit Stations
- A 5 mile long multi-use trail – Downtown New Britain to Newington Junction Station
- Busway runs adjacent to Amtrak





Program Schedule

- Contracts 1,2,3,4 & 5

CONSTRUCTION SCHEDULE

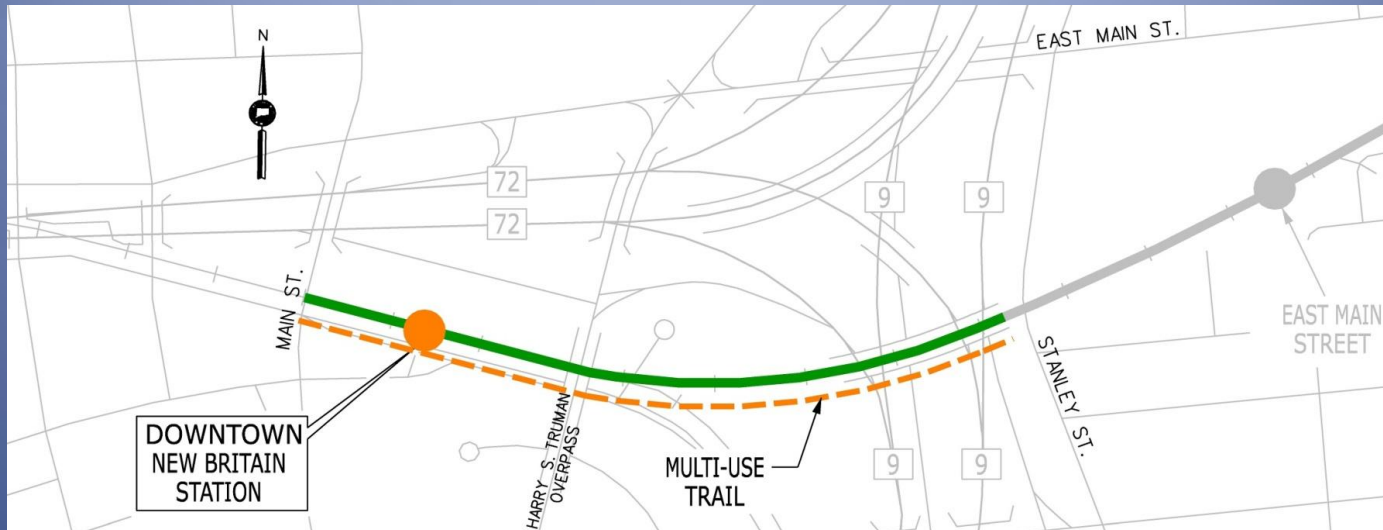
CONTRACT	2012				2013				2014				2015			
	Q1	Q2	Q3	Q4	Q1	Q2	Q3	Q4	Q1	Q2	Q3	Q4	Q1	Q2	Q3	Q4
PROJECTS IN CONSTRUCTION																
Contract No. 1 – Busway																
Contract No. 2 - Busway & Cedar St. Bridge																
Contract No. 3 - Busway & Flatbush Bridge																
Contract No. 5 - Broad St. Bridge																
PROJECTS IN PROCUREMENT																
Contract No. 4 - Busway																

 *Projects in Procurement*
 *Projects in Design*



CONTRACT 1

Main Street to Stanley Street



Low bid = \$ 26,718,483

Contractor = Manafort Brothers, Inc.

Start of construction = June 2012

Anticipated completion date = Fall 2014



CONTRACT 2

Stanley Street to Cedar Street and Cedar Street (Route 175) Bridge Replacement



Low bid = \$ 39,427,150

Contractor = Empire Paving & Schiavone Construction Joint Venture II

Start of construction = June 2012

Anticipated completion date = Summer 2014



CONTRACT 3

Cedar St, Newington to Sigourney St, Hartford & Grade Separation:
Flatbush Avenue over Busway and Amtrak, West Hartford



Low bid = \$ 130,646,081

Contractor = Middlesex Corporation

Start of construction = June 2012

Anticipated completion date = Fall 2014



CONTRACT 4

Sigourney Street to Asylum Avenue in Hartford



Low bid = \$ 14,800,062

Contractor = Empire Paving Inc.

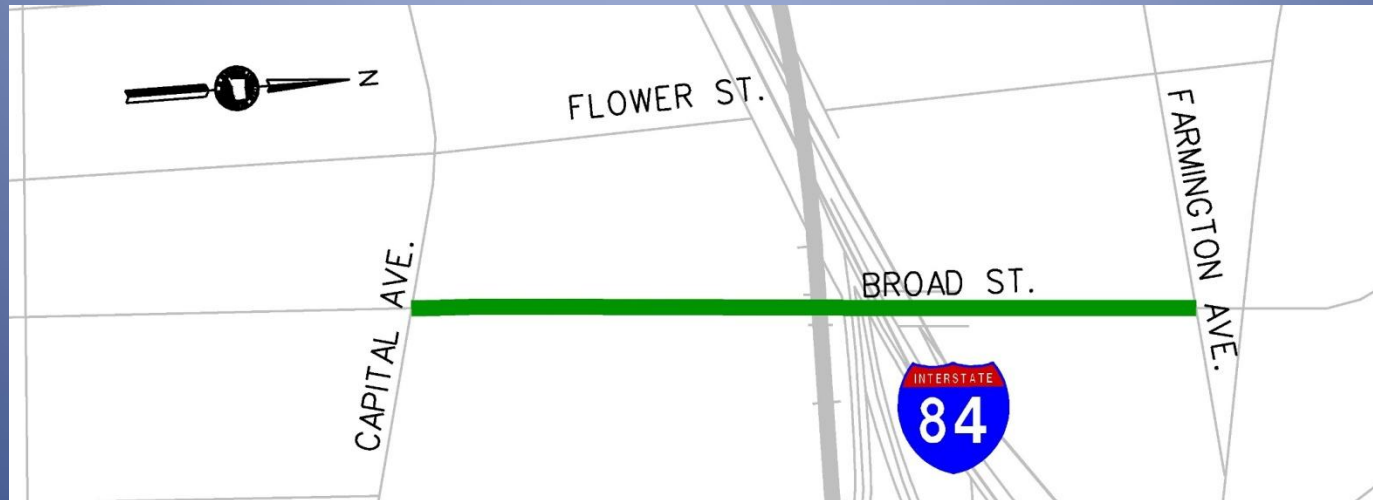
Anticipated start construction = November 2012

Anticipated completion date = Fall 2014



CONTRACT 5

Broad Street Bridge Replacement and Streetscape



Low Bid = \$9,559,706

Contractor = Manafort Brothers, Inc.

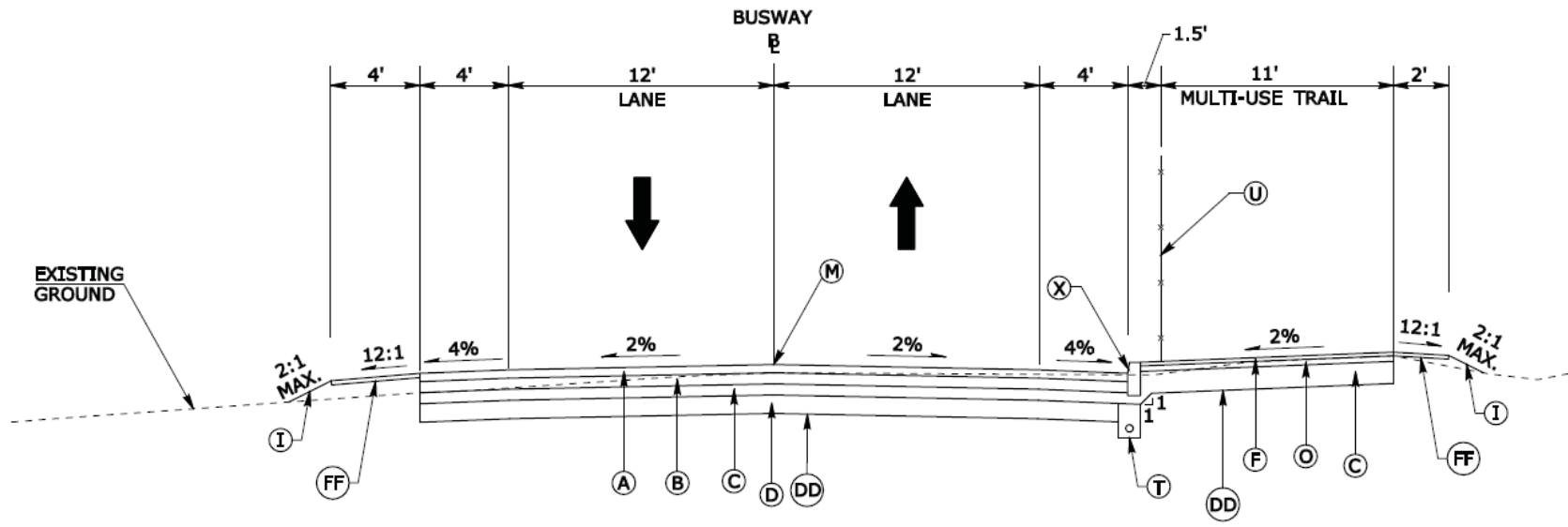
Start of Construction = June 2012

Anticipated construction complete = Winter 2014



Contract 1

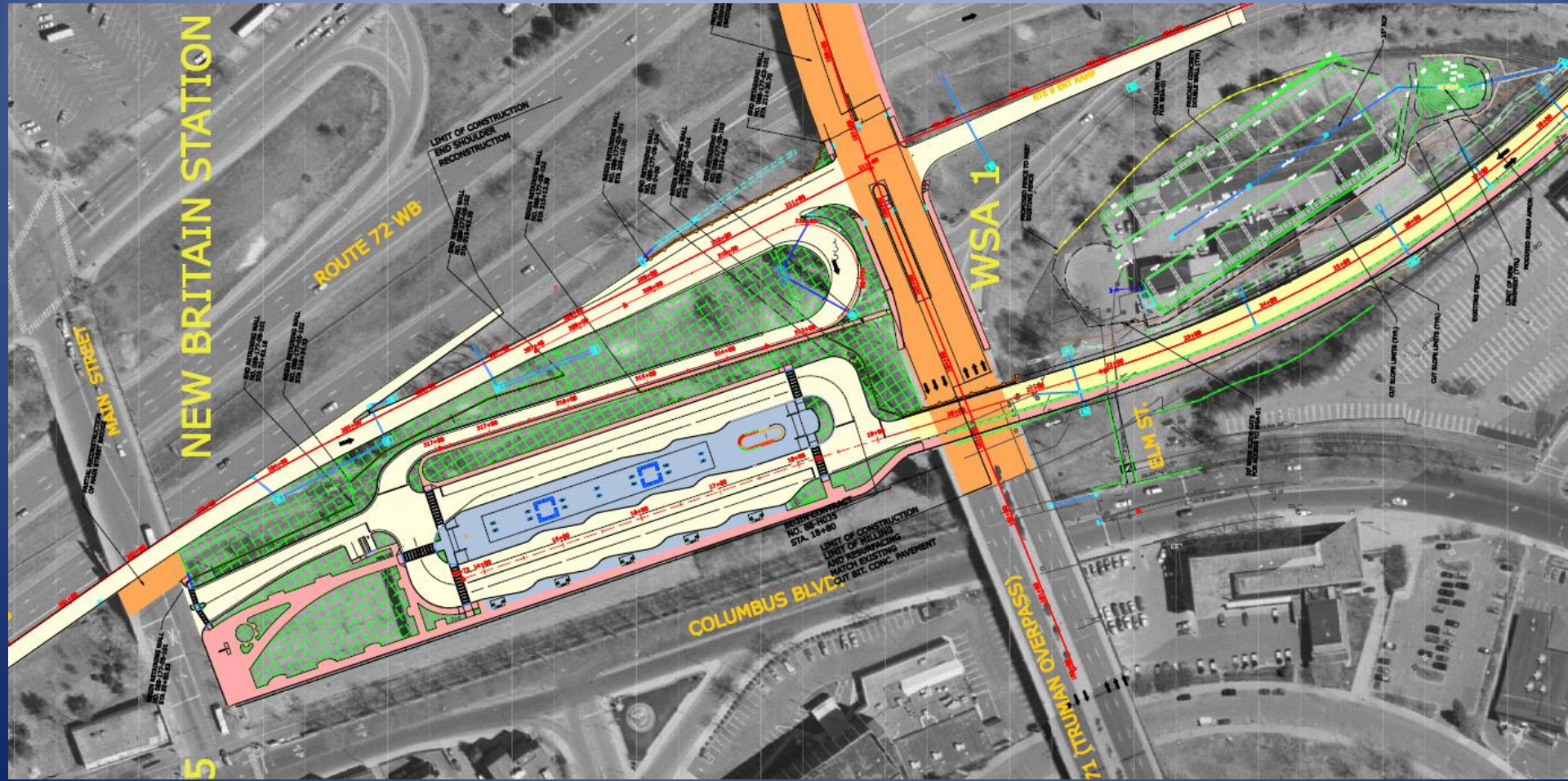
Busway Mainline – Normal Section



**BUSWAY MAINLINE - NORMAL SECTION
(WITH ADJACENT MULTI-USE TRAIL ON RIGHT)**



Contract 1 New Britain Station



Contract 1

New Britain Station - Rendering



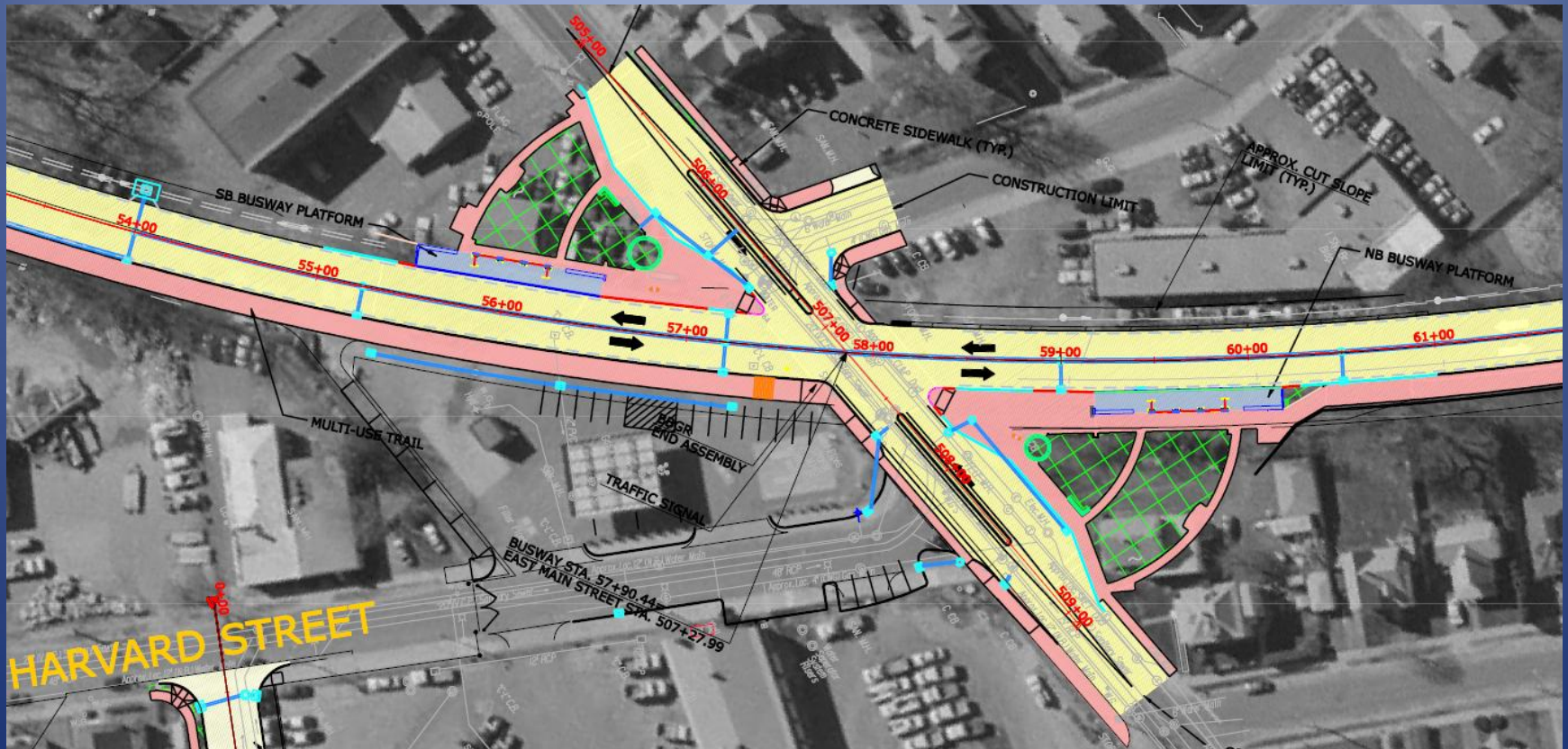
Contract 1

New Britain Station - Rendering



CONTRACT 2

East Main Street Station



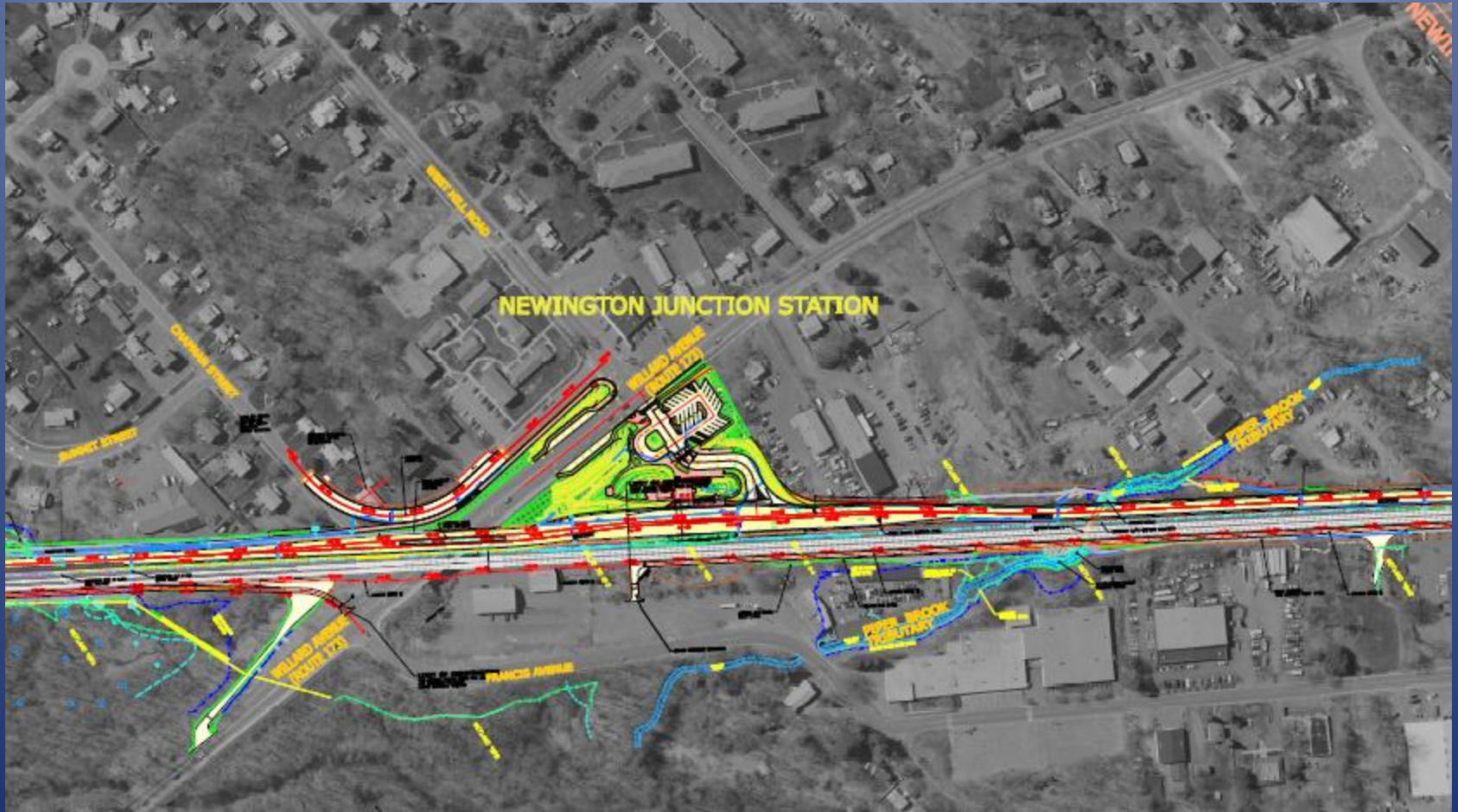
CONTRACT 2 East Street Station



Cedar Street Station



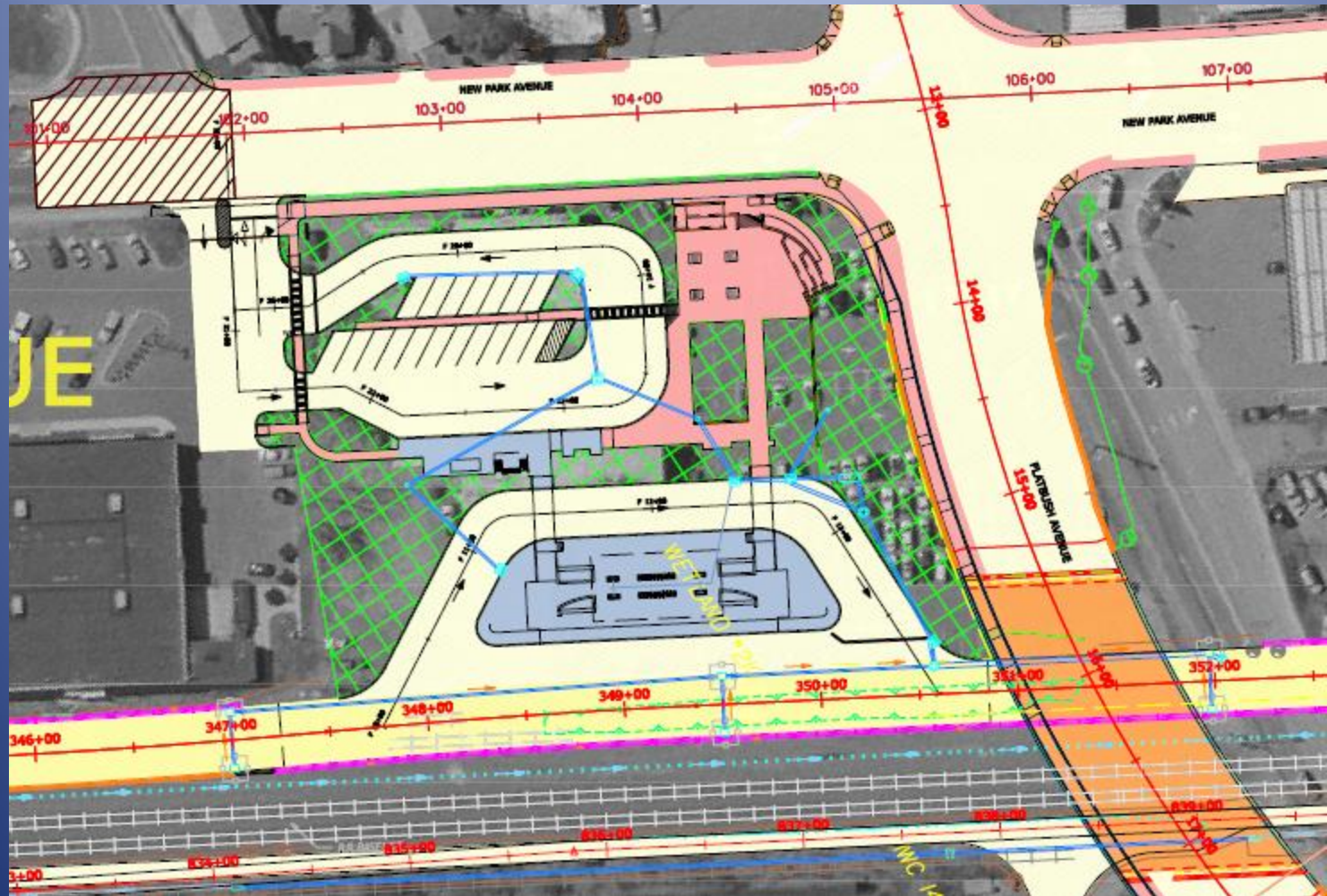
Newington Junction Station



Elmwood Station



Flatbush Station



Contract 3

Flatbush Avenue Station



Kane Street Station



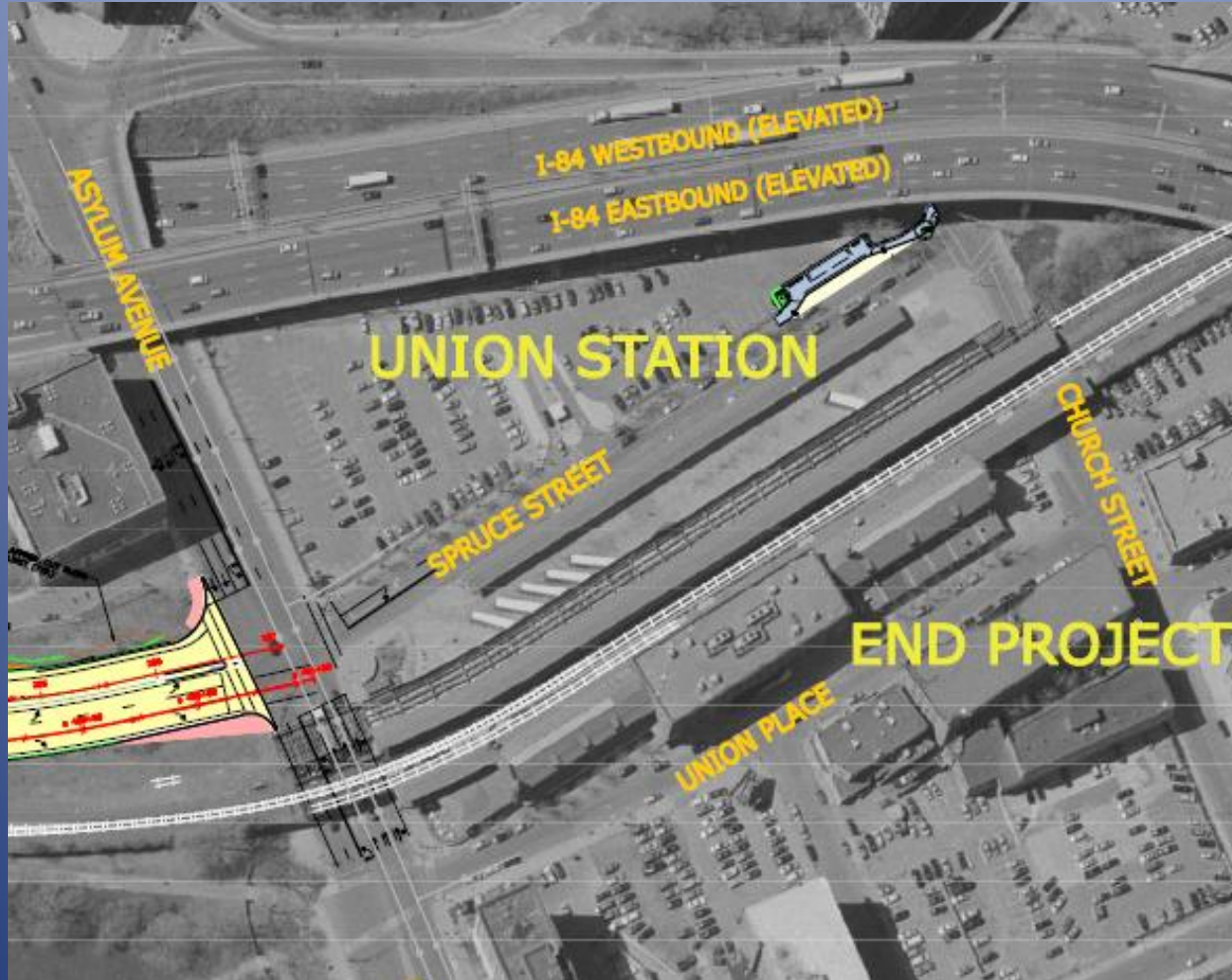
Parkville Station



Sigourney Street Station



Union Station



Thank you

For more information please visit:

www.CTfastrak.com

www.ct.gov/dot



AGENDA

- Geographic Overview
- Project Components
- Typical Station Walkthrough
- Key Considerations



STATE PROJECT NO. 088-177
(CONTRACT NO.1)

(MAIN STREET TO STANLEY STREET)

DOWNTOWN NEW BRITAIN
ITS-01
STA-01
STA-02
STA-03

STATE PROJECT NO. 088-178 (CONTRACT NO.2)

(STANLEY STREET TO JUST NORTH OF CEDAR STREET)

EAST MAIN STREET
ITS-05
ITS-06
STA-04
STA-05

EAST STREET
ITS-11
STA-06

CEDAR STREET
ITS-15
STA-07
STA-08
STA-09

STATE PROJECT NO. 088-179 (CONTRACT NO.7)
(MAIN STREET TO CT TRANSIT HARTFORD FACILITY BUILDING)

STATE PROJECT NO. 093-180 (CONTRACT NO.3)

(JUST NORTH OF CEDAR STREET TO JUST NORTH OF SIGOURNEY STREET STATION)

NEWINGTON JUNCTION
ITS-22
ITS-23
STA-10
STA-11

STATE PROJECT NO. 088-179 (CONTRACT NO.7 CONTINUED)

(MAIN STREET TO CT TRANSIT HARTFORD FACILITY BUILDING)

STATE PROJECT NO. 093-180 (CONTRACT NO.3 CONTINUED)

(JUST NORTH OF CEDAR STREET TO JUST NORTH OF SIGOURNEY STREET STATION)

ELMWOOD
ITS-28
ITS-29
STA-12
STA-13

FLATBUSH AVENUE
ITS-33
STA-14
STA-15

KANE STREET
ITS-37
STA-16
STA-17

PARK STREET
ITS-40
STA-18
STA-19

STATE PROJECT NO. 063-671 (CONTRACT NO.5)
REPLACEMENT OF BROAD STREET BRIDGE

STATE PROJECT NO. 063-670 (CONTRACT NO.4)

(JUST NORTH OF SIGOURNEY STREET STATION TO ASYLUM STREET/UNION STATION)

SIGOURNEY STREET
ITS-44
STA-20

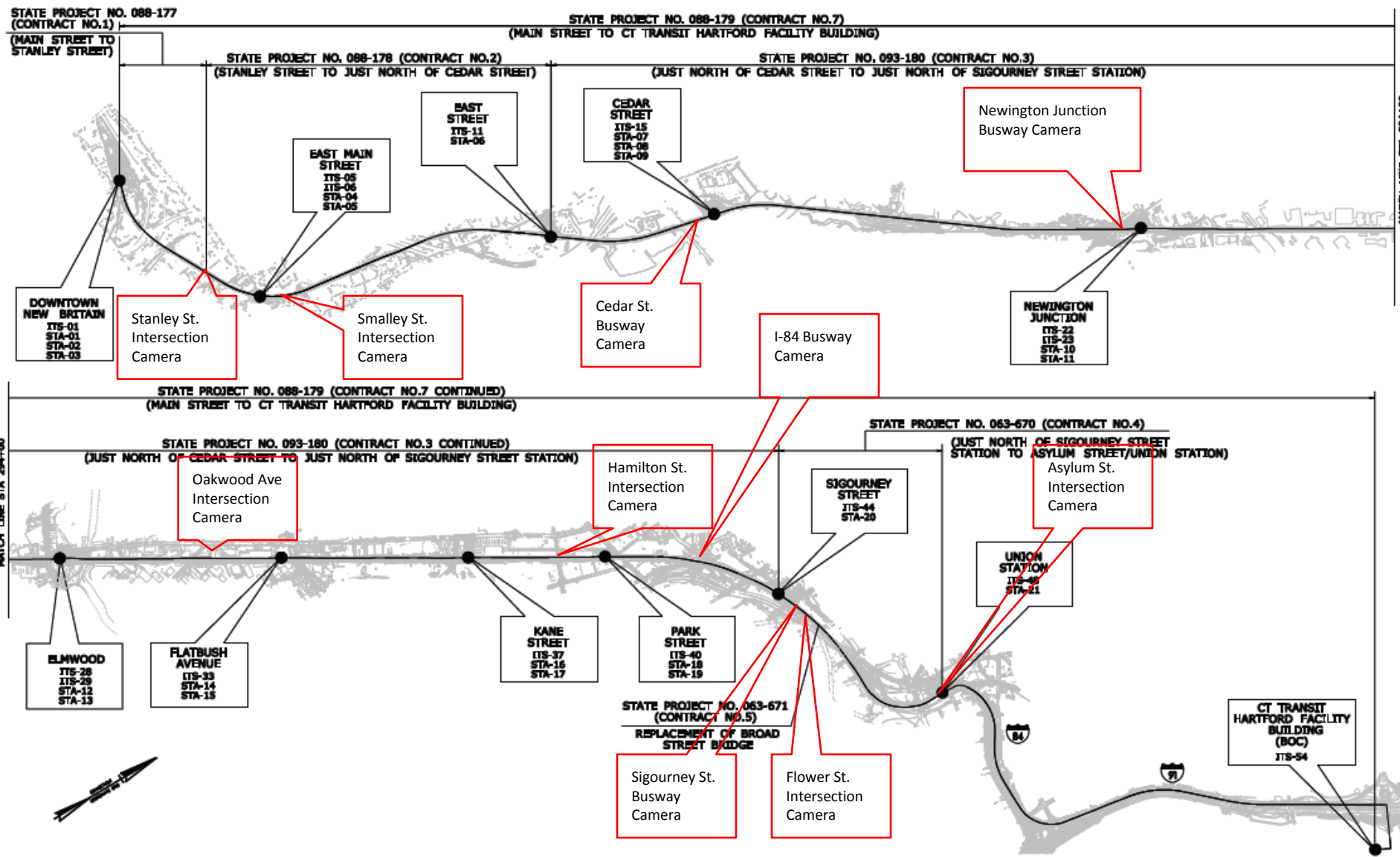
UNION STATION
ITS-48
STA-21

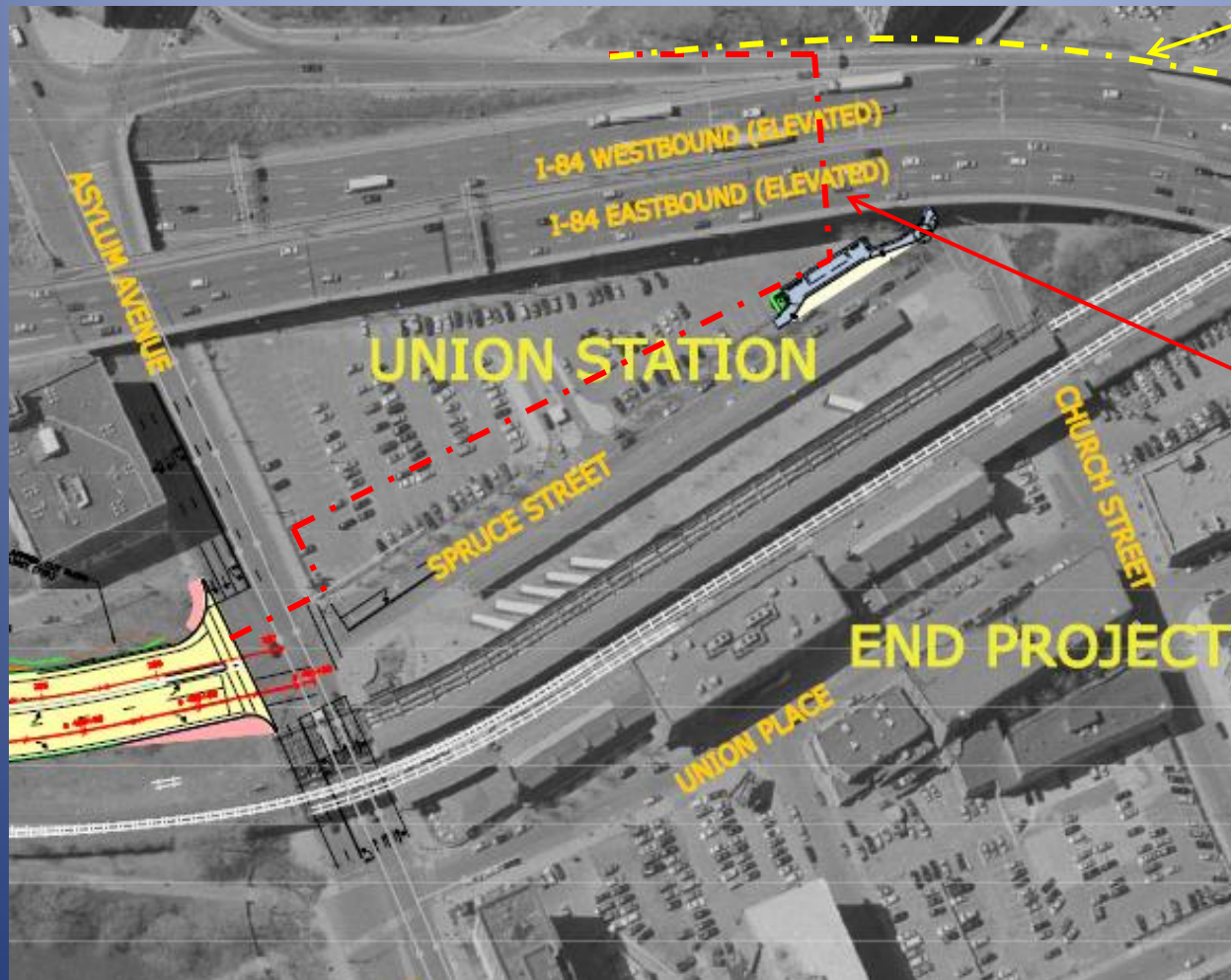
CT TRANSIT HARTFORD FACILITY BUILDING (BOC)
ITS-54

MATCH LINE STA 294+00

MATCH LINE STA 294+00







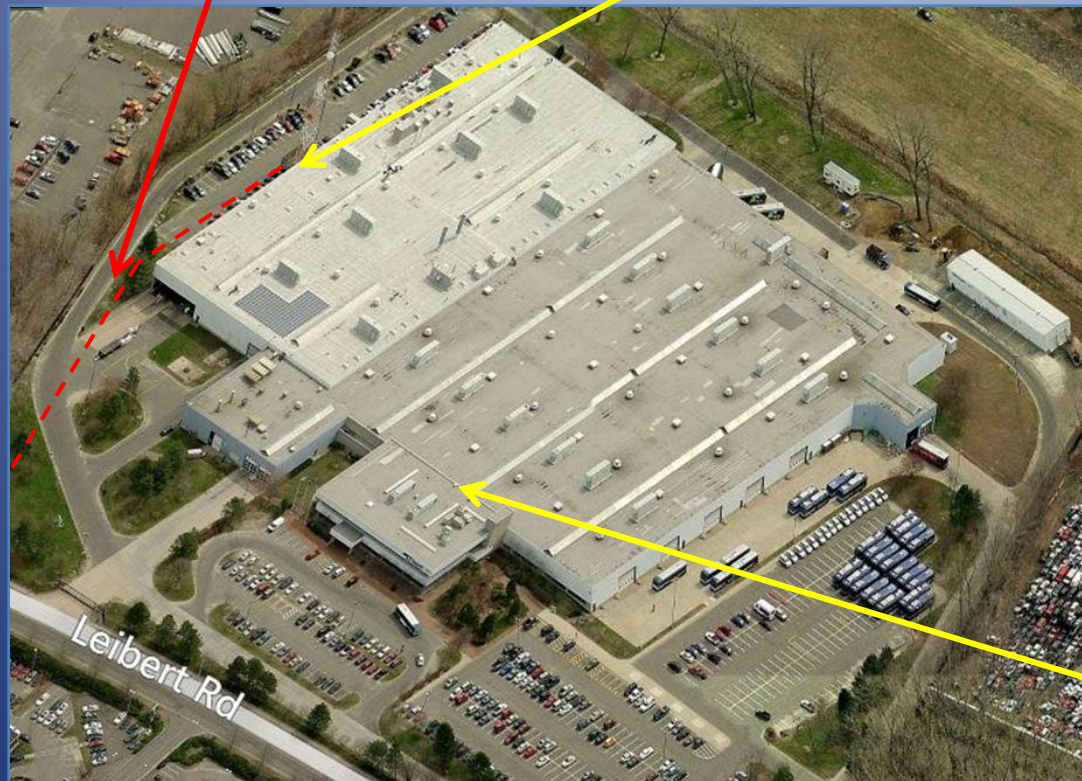
Existing CTDOT
Fiber Conduit
Along I-84 and
I-91

Existing Fiber
Conduit
Installed by
Contract 4



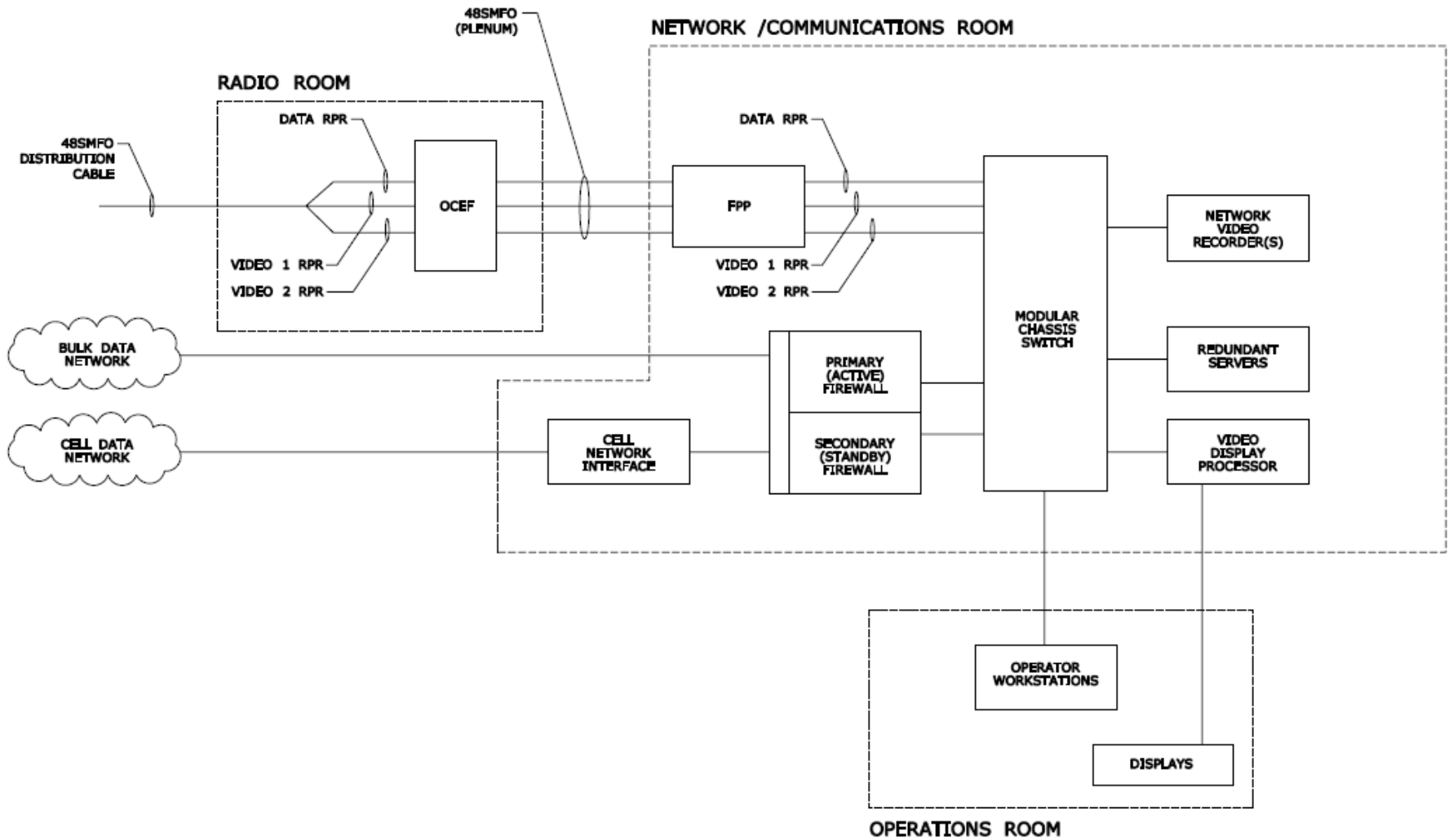
Existing Fiber
Conduit Installed
by Contract 4

Building Entry
Point



Dispatch Room
Location





PROJECT COMPONENTS

- Central System Hardware: Racks, Servers, Workstations, Monitors, Switches, etc. at the BOC and New Britain Station Supervisor Building.
- Central Systems Software: CAD/AVL Central Software, AVAS Software, APC Software, Traveler Information Software, Fare Management Software, CCTV Camera Management Software, ECB Management Software, Network Monitoring Software at the BOC.
- On-Board Equipment: MDT, VLU, GPS antenna, APC, AVA, MCGR, interior VMS, etc. on-board the *CTfastrak* fleet.
- Automatic Fare Collection Equipment: TVMs, Ticket Validators, and Mobile Enforcement Devices at stations.



PROJECT COMPONENTS (CONT'D)

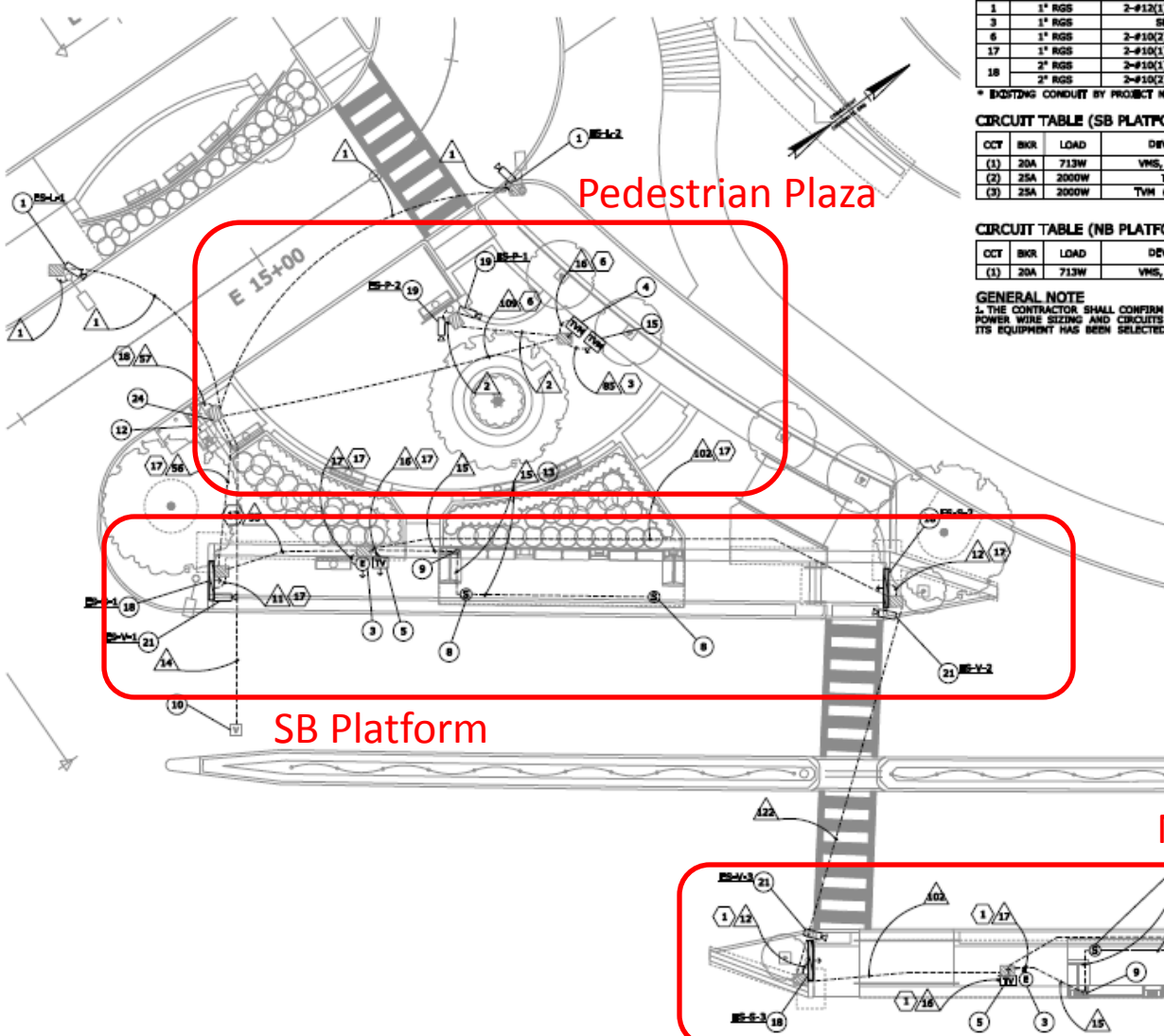
- Traveler Information Systems: Controllers, VMS, and PA Systems at stations.
- Safety/Security Systems: Emergency Callboxes and CCTV Cameras at stations and along the busway.
- Communications Systems: Fiber Optic communications backbone along the entire corridor and extending north to the BOC.
- Technical Support & Warranty: Initial 2-year period of technical support, maintenance and warranty services for the entire system.



OPTIONS (CONT'D)

- Year 3 and Year 4 Technical Support & Warranty: Two additional 1-year extensions of support and warranty period.
- Redundant Modular Chassis Switch: Provide redundant chassis switch, network and communications equipment at Downtown New Britain Station Supervisor Building.
- Additional On-Board Equipment Quantities: Additional quantities of installed on-board equipment (MDT, VLU, APC, etc.) for potential future expansion of the system.





ELECTRICAL NOTE SCHEDULE

RUN#	EXISTING CONDUIT *	INSTALL CONDUCTORS
1	1" RGS	2-#12(1), 1-#12(G)
3	1" RGS	SPARE
6	1" RGS	2-#10(2), 1-#10(G)
17	1" RGS	2-#10(1), 1-#10(G)
18	2" RGS	2-#10(1), 1-#10(G)
	2" RGS	2-#10(2), 1-#10(G)

* EXISTING CONDUIT BY PROJECT NO. 088-177

CIRCUIT TABLE (SB PLATFORM)

CCT	BKR	LOAD	DEVICES
(1)	20A	713W	VMS, BCS, TV
(2)	25A	2000W	TYM
(3)	25A	2000W	TYM (FUTURE)

CIRCUIT TABLE (NB PLATFORM)

CCT	BKR	LOAD	DEVICES
(1)	20A	713W	VMS, BCS, TV

GENERAL NOTE

1. THE CONTRACTOR SHALL CONFIRM ALL POWER WIRE SIZING AND CIRCUITS ONCE ITS EQUIPMENT HAS BEEN SELECTED.

CONSTRUCTION NOTES *

- FURNISH AND INSTALL NEW CCTV CAMERA AND CABLES ON EXISTING LIGHT POLE PER ITS DETAIL ITD-15.
- FURNISH AND INSTALL EMERGENCY CALL BOX WITH UPS PER ITS DETAIL ITD-20.
- FURNISH AND INSTALL TICKET VENDING MACHINE WITH ASSEMBLY, UNLESS LOCATED UNDER CANOPY, PER ITS DETAIL ITD-21.
- FURNISH AND INSTALL TICKET VALENTOR PER ITS DETAIL ITD-21.
- FURNISH AND INSTALL PA SYSTEM SPEAKERS ON PLATFORM CANOPY PER ITS DETAILS ITD-18 AND 20.
- ROUTE CABLING FROM UNDERGROUND CONDUIT TO CANOPY CONDUIT PER ITS DETAIL ITD-19.
- SEE CORRIDOR COMMUNICATION PLAN ITS-11 FOR DROP FIBER CONNECTION TO DISTRIBUTION FIBER.
- FURNISH AND INSTALL NEW FIBER PATCH PANEL, GIGABIT ETHERNET SWITCHES, 12S CONTROLLER, PA AMPLIFIER AND OTHER ASSOCIATED EQUIPMENT BY EXISTING COMMUNICATIONS CABINET; TERMINATE 12 SFPO CABLE USING BUFFER TUBE PAN-OUT KIT ON FIBER PATCH PANEL; SEE ITS DETAILS ITD-04 TO ITD-07 AND ITD-22 FOR EQUIPMENT LAYOUT AND CABLING.
- EXISTING CONDUIT LOCATED IN CANOPY; SEE ITS DETAIL ITD-18 FOR CABLE ROUTING.
- LOCATION OF PROPOSED FUTURE TYM.
- FURNISH AND INSTALL NEW FIBER PATCH PANEL, GIGABIT ETHERNET SWITCHES AND OTHER ASSOCIATED EQUIPMENT IN EXISTING SECONDARY COMMUNICATIONS CABINET; TERMINATE 12 SFPO CABLE USING BUFFER TUBE PAN-OUT KIT ON FIBER PATCH PANEL; SEE ITS DETAILS ITD-04 TO ITD-07 FOR EQUIPMENT LAYOUT AND CABLING.
- FURNISH AND INSTALL NEW SINGLE-SIDED VARIABLE MESSAGE SIGN WITH SPEAKER AND ACTUATION DEVICE ON EXISTING Pylon PER ITS DETAIL ITD-19.
- FURNISH AND INSTALL NEW CCTV CAMERA AND CABLES ON EXISTING Pylon PER ITS DETAIL ITD-15.
- FURNISH AND INSTALL NEW CCTV CAMERA AND CABLES ON EXISTING Pylon PER ITS DETAIL ITD-15.
- TERMINATE AND COIL 100' OF SPEAKER WIRE IN EXISTING HANDHOLE FOR CONNECTION TO FUTURE SPEAKERS.

* CONSTRUCTION NOTES ARE NOT CONSECUTIVE

CAMERA MOUNTING HEIGHT

CAMERA NAME	MOUNTING HEIGHT (FT)
BS-1-1	12
BS-1-2	14
BS-2-1	14
BS-2-2	14
BS-3-1	14
BS-3-2	14
BS-4-1	PYLON MOUNTED
BS-4-2	PYLON MOUNTED
BS-5-1	PYLON MOUNTED
BS-5-2	PYLON MOUNTED

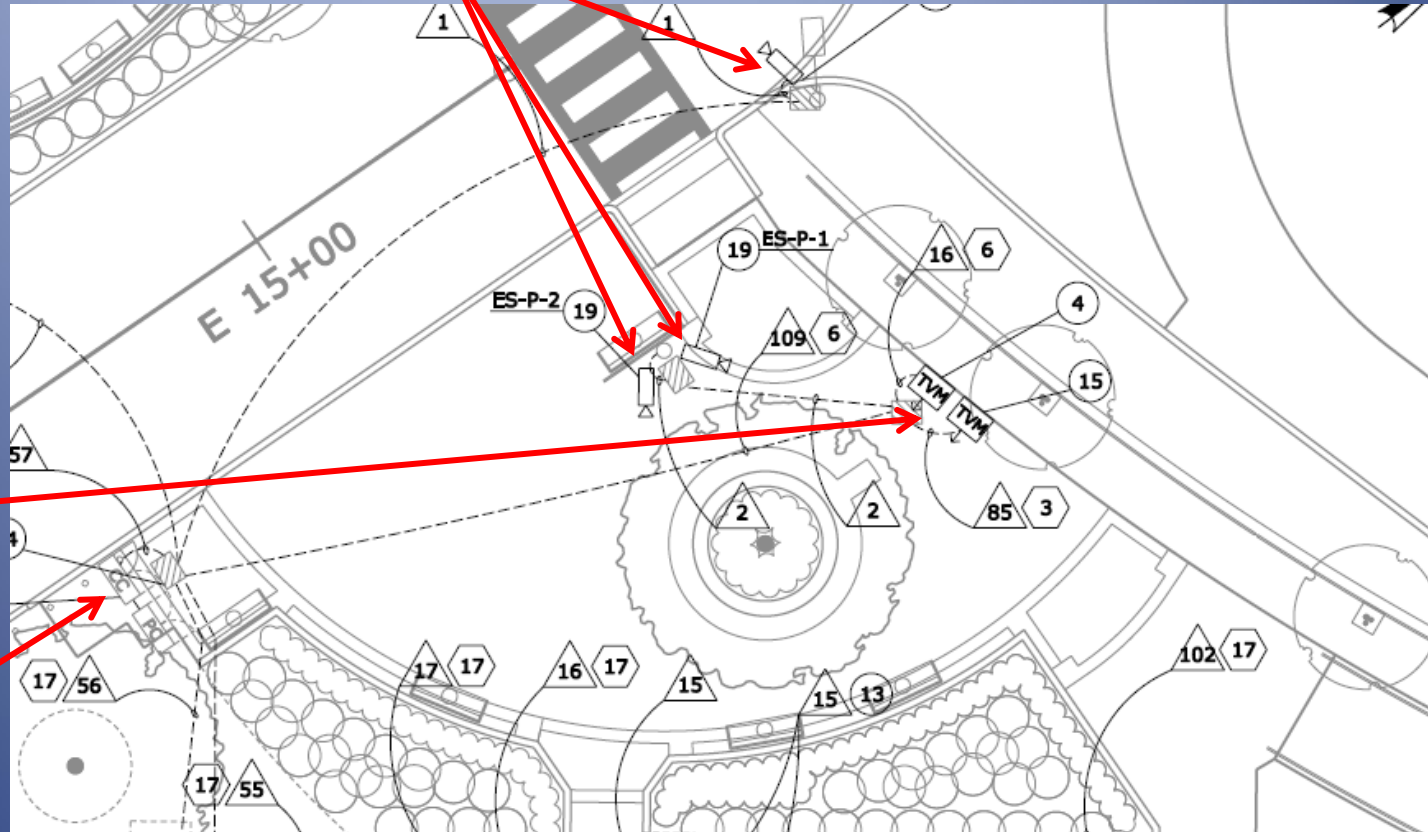
WIRE NOTE SCHEDULE

RUN#	EXISTING CONDUIT*	INSTALL CONDUCTORS
1	1" RGS	1-CAT5, 1-#16(CCTV)
2	2" RGS	2-CAT5, 2-#16(CCTV)
11	1" RGS	3-CAT5, 1-#16(CCTV)
12	1" RGS	3-CAT5, 1-#14(CCTV)
14	2" RGS	1-12 SFPO
15	1" RGS	1-#18(SP)
16	1" RGS	1-CAT5
17	1" RGS	2-CAT5, 1-CAT3
	2" RGS	1-12 SFPO
55	2" RGS	6-CAT5, 2-CAT3, 1-#14(CCTV), 2-#18(SP)
	2" RGS	1-12 SFPO
56	2" RGS	9-CAT5, 2-CAT3, 1-#14(CCTV), 1-#16(CCTV), 2-#18(SP)
	2" RGS	2-12 SFPO
57	4" RGS	9-CAT5, 1-#14(CCTV), 5-#16(CCTV)
	4" RGS	5-CAT5, 2-CAT3, 3-#18(SP)
	3" RGS	SPARE
	2" RGS	1-12 SFPO
102	2" RGS	3-CAT5, 1-CAT3, 1-#14(CCTV), 1-#18(SP)
	3" RGS	1-12 SFPO
103	3" RGS	6-CAT5, 1-#14(CCTV)
	3" RGS	1-12 SFPO
104	3" RGS	6-CAT5, 1-#14(CCTV), 1-#16(CCTV)
109	2" RGS	3-CAT5, 1-#16(CCTV)
	2" RGS	1-12 SFPO
122	1" RGS	1-CAT3, 1-#18(SP)

* EXISTING CONDUIT BY PROJECT NO. 088-177



CCTV Cameras on Existing Poles



Ticket Vending Machines

Communications Cabinet



VMS

CCTV
Camera

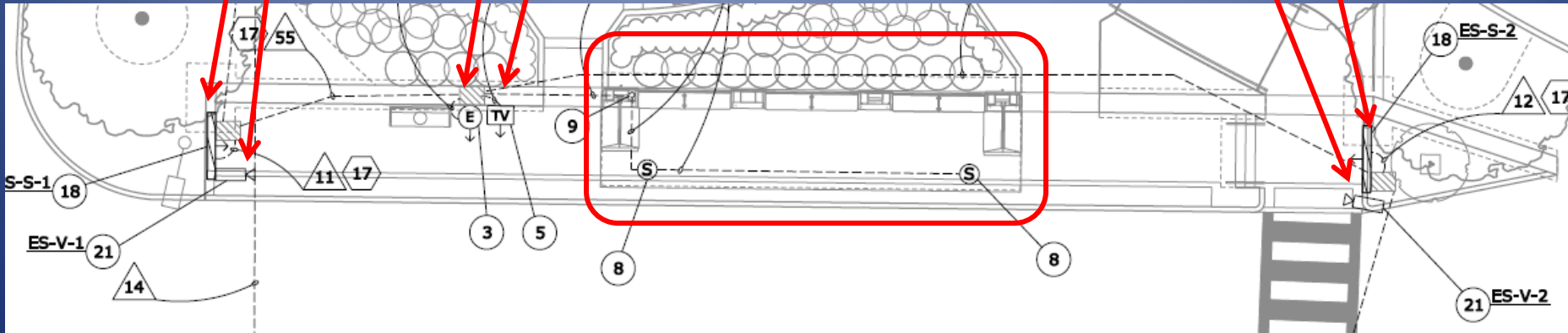
Emergency Callbox

Ticket Validator

VMS

CCTV
Camera

Shelter w/ PA Speakers



KEY CONSIDERATIONS

- Best Value Functionality
- System Integration
- Modularity/Ease of Repair and Maintenance
- Flexibility
- Expandability
- Traceability/Rigorous Documentation and Testing
- Qualifications
- Project Coordination
- Project Schedule

