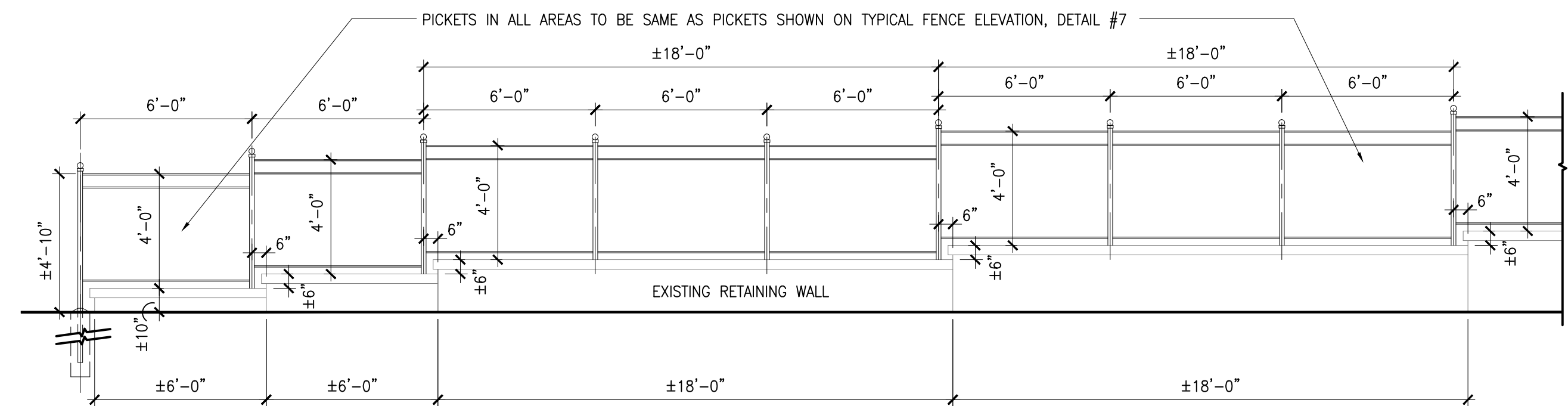


15 FENCE @ RAMP - ELEVATION
SCALE: 1/4"= 1'-0"

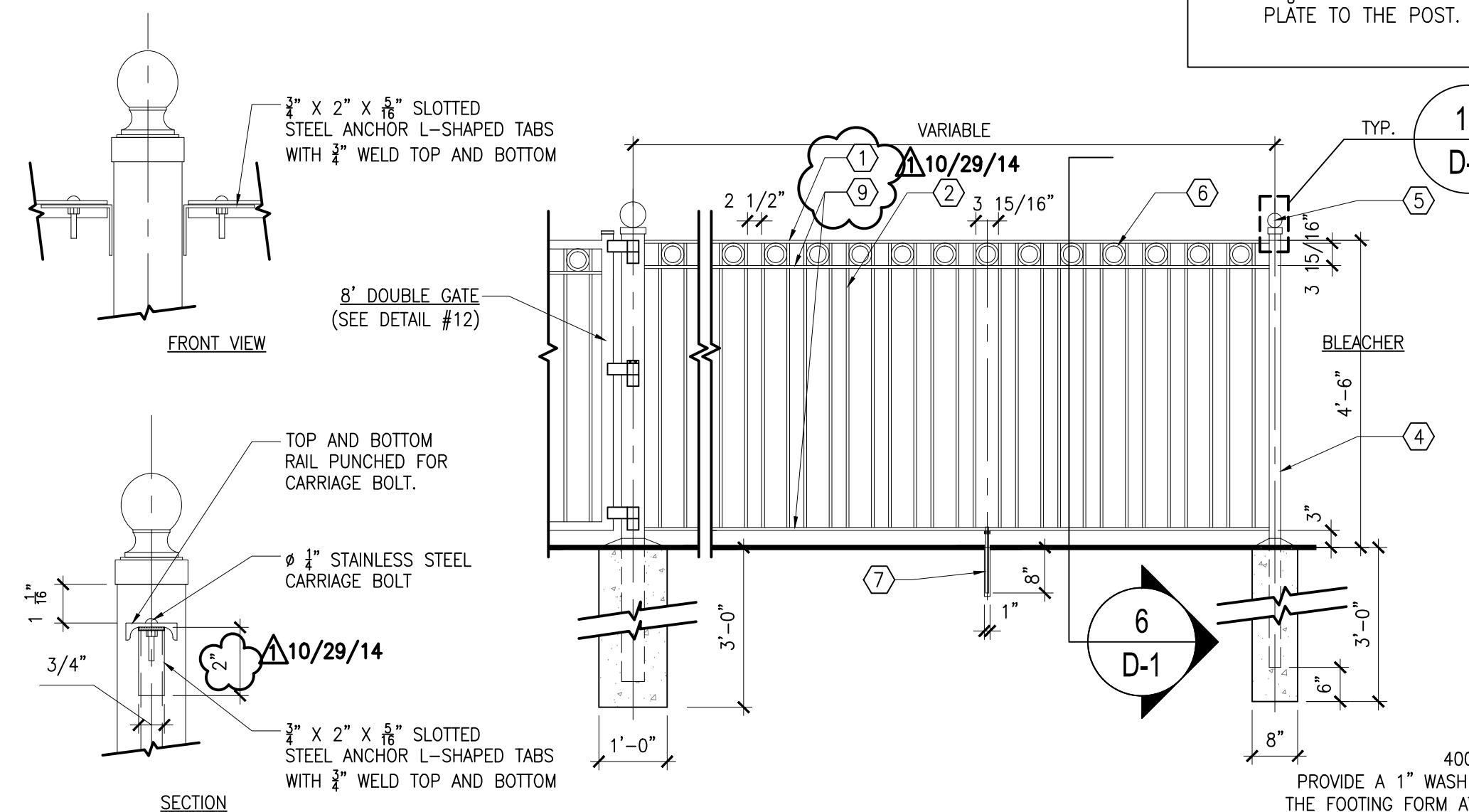
GENERAL NOTES:
- NOTIFY CALL-BEFORE-YOU-DIG PRIOR TO PREPARING SHOP DRAWINGS, OR COMMENCING WORK. AGENCY SHALL MARK THE LOCATION OF ALL EXISTING UTILITIES. THE LOCATION OF THE FENCE SYSTEMS MAY VARY AS REQUIRED TO AVOID CONFLICTS WITH EXISTING UTILITIES.
- INSTALL ALL FENCE SYSTEMS IN ACCORDANCE WITH THE GENERAL REQUIREMENTS OF ARTICLE 9.13.03 OF THE STATE HIGHWAY SPECIFICATIONS. HE SHALL INSTALL THEM PLUMB, LEVEL, TRUE TO LINE, WITHIN A TOLERANCE OF 1" IN 10'-0". ANY WORK NOT CONFORMING TO THESE TOLERANCES SHALL BE REMOVED AND RECONSTRUCTED WITHIN TOLERANCES.

NOTE:
CONTRACTOR TO FIELD VERIFY ALL DIMENSIONS AND SUPPLY SHOP DRAWINGS PRIOR TO FENCE & GATES INSTALLATION



14 FENCE @ RETAINING WALL - PARTIAL ELEVATION
SCALE: 1/4"= 1'-0"

NOTE:
SPACING BETWEEN PICKETS & BETWEEN POST AND ADJOINING PICKETS SHOULD NEVER EXCEED 3 15/16" IN ALL FENCE PANELS (TYPICAL AND VARIABLE) & ALL GATES.



11 FENCE ANCHOR DETAILS, TYPICAL
SCALE: 3/8"= 1'-0"

10 TYPICAL FENCE ELEVATION @ CONCRETE SLAB UNDER THE PRESS BOX
SCALE: 1/2"= 1'-0"

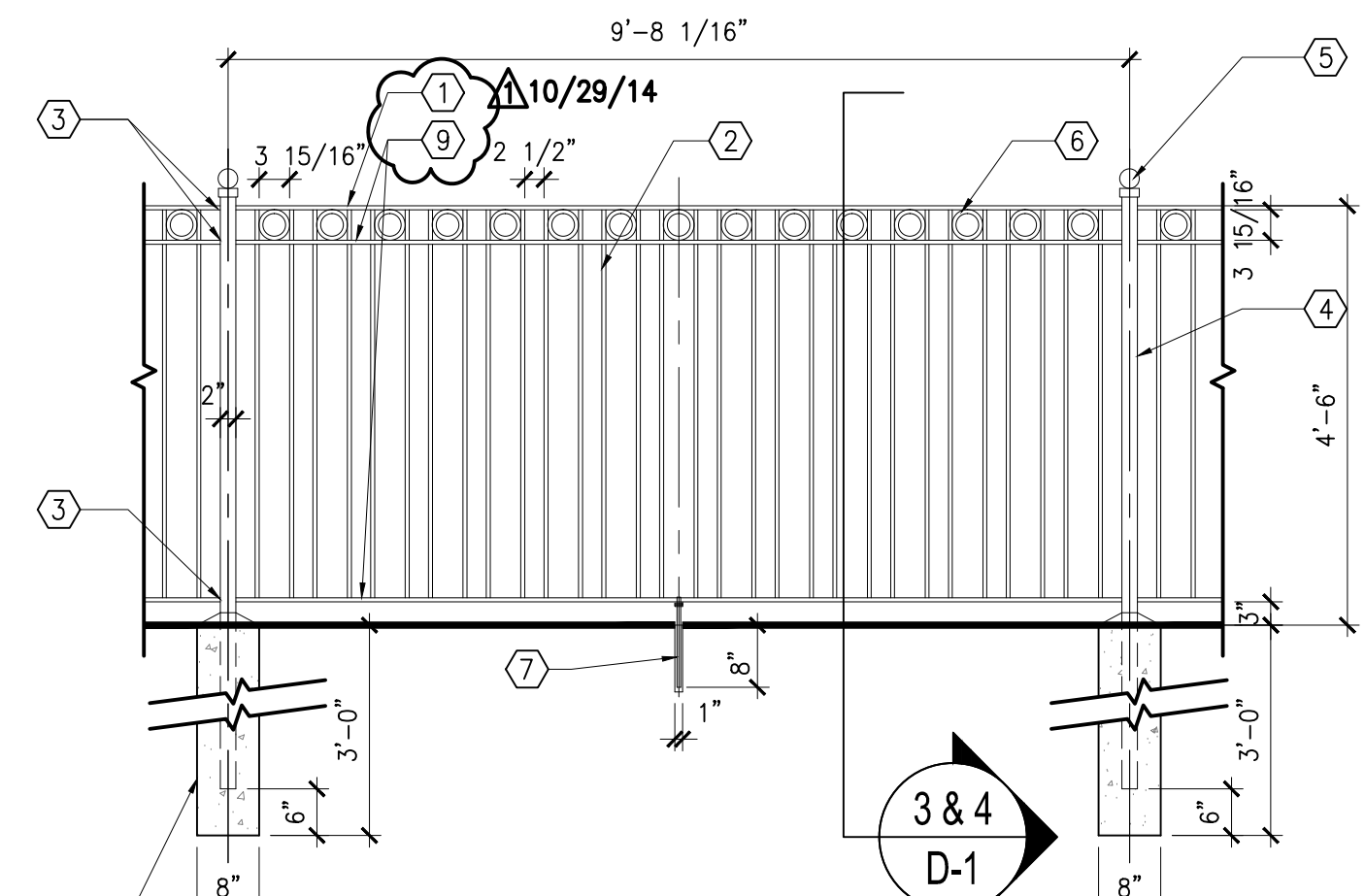
13 3'-6" & 6'-0" WIDE SINGLE GATE ELEVATION
N.T.S.

12 SHOWN ONE SIDE ONLY
8'-0", 12'-0" & 16'-0" WIDE DOUBLE GATE ELEVATION
N.T.S.

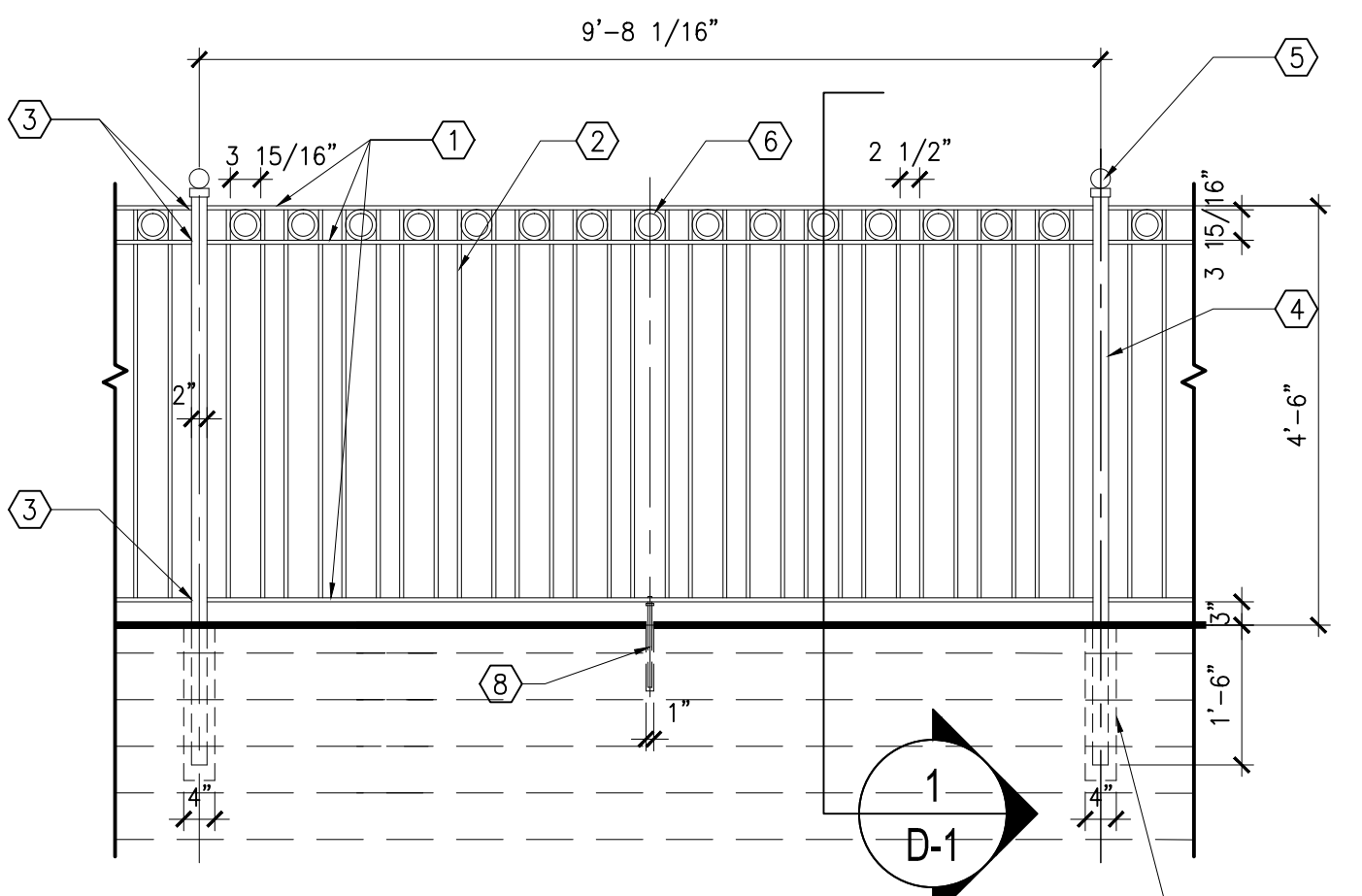
FENCE PANEL REFERENCE

- 1 TOP RAIL: 1 1/2" x 1/2" x 1/8" STEEL CHANNEL.
- 2 FENCE PICKETS: 3/4" x 3/8" SOLID STEEL BAR STOCK. WELD CONTINUOUSLY, 2 SIDES, TO THE UNDERSIDE OF THE BOTTOM, INTERMEDIATE AND TOP RAILS.
- 3 FENCE PANEL ANCHOR
- 4 FENCE POST: 2" x 2" x 1/8" STEEL TUBE
- 5 POST CAP: 2 1/2" x 3/8" HOLLOW STEEL BALL. PLUG WELDED THRU A 1/8" HOLE IN A 2 1/2" x 2 1/2" x 3/8" THICK STEEL POST CAP PLATE WITH 1/8" RADIUS CORNERS. CONTINUOUSLY WELD THE CAP PLATE TO THE POST. GRIND ALL FILLET WELDS TO A UNIFORM RADIUS AND FINISH SMOOTH.

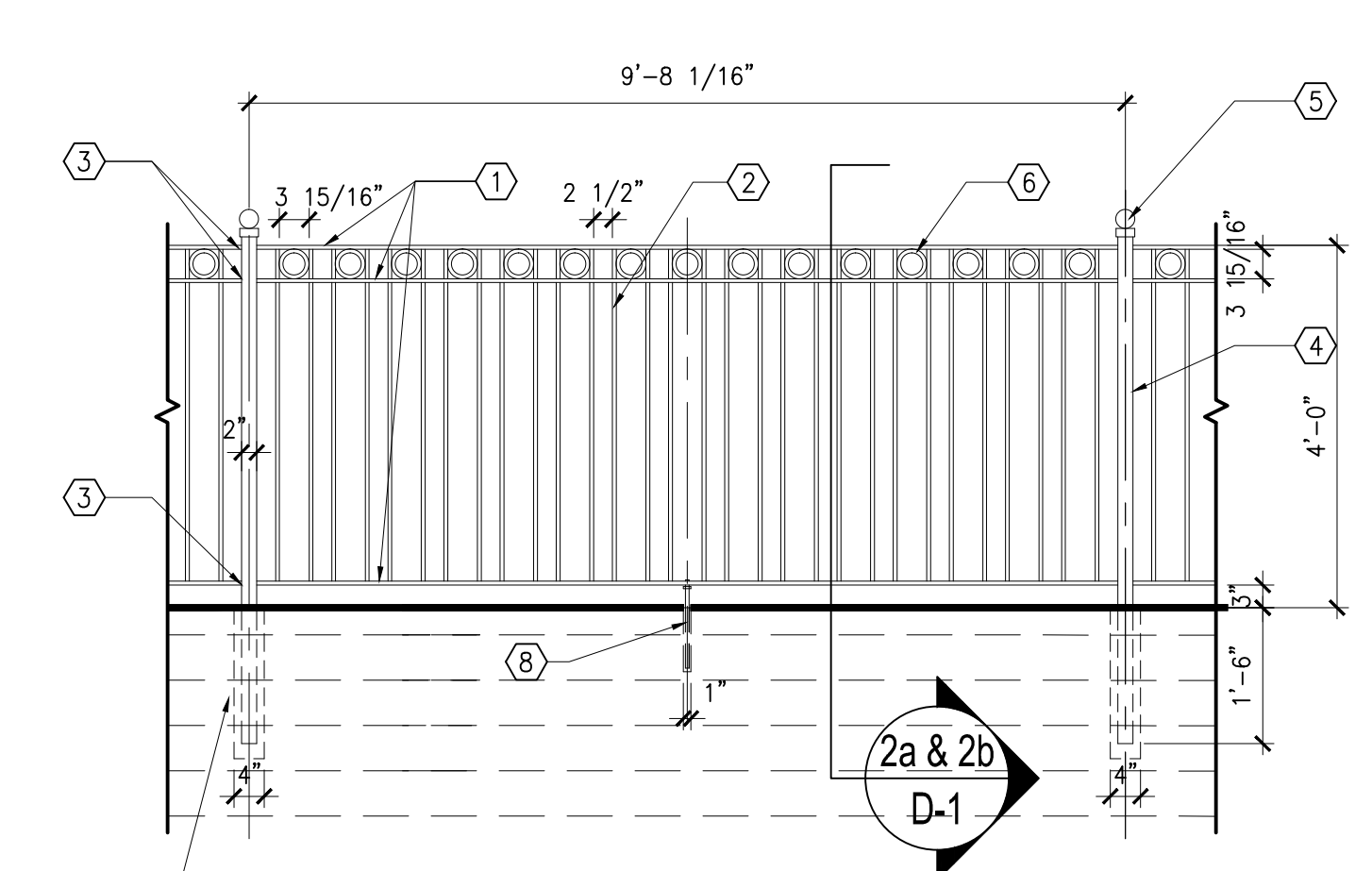
- 6 ORNAMENTAL RINGS: 1/2" x 1/2" x 3/16" SOLID STEEL RING WELD AT QUARTER POINTS TO THE PICKETS, THE INTERMEDIATE RAIL AND THE TOP RAIL BAR. GRIND AND FINISH ALL WELDS.
- 7 FOR ALL PANELS 8'-0" LONG OR MORE: 1/2" CENTER OF FENCE PANEL PREDRILL A 5/8" HOLE. CORE DRILL 1/2", 8" DEEP INTO PAVEMENT TO ANCHOR A 1/2" THREADED GALVANIZED ROD 8" LONG WITH DOUBLE NUT AT THE BOTTOM. FILL WITH HIGH STRENGTH GROUT.
- 8 FOR ALL PANELS 8'-0" LONG OR MORE: 1/2" CENTER OF FENCE PANEL PREDRILL A 5/8" HOLE. CORE DRILL 1/2", 8" DEEP INTO WALL TO ANCHOR A 1/2" THREADED GALVANIZED ROD 8" LONG WITH DOUBLE NUT AT THE BOTTOM. FILL WITH HIGH STRENGTH GROUT.
- 9 INTERMEDIATE AND BOTTOM RAIL: 1 1/2" x 1/2" x 1/8" STEEL CHANNEL. PREPUNCH HOLES FOR PICKETS.



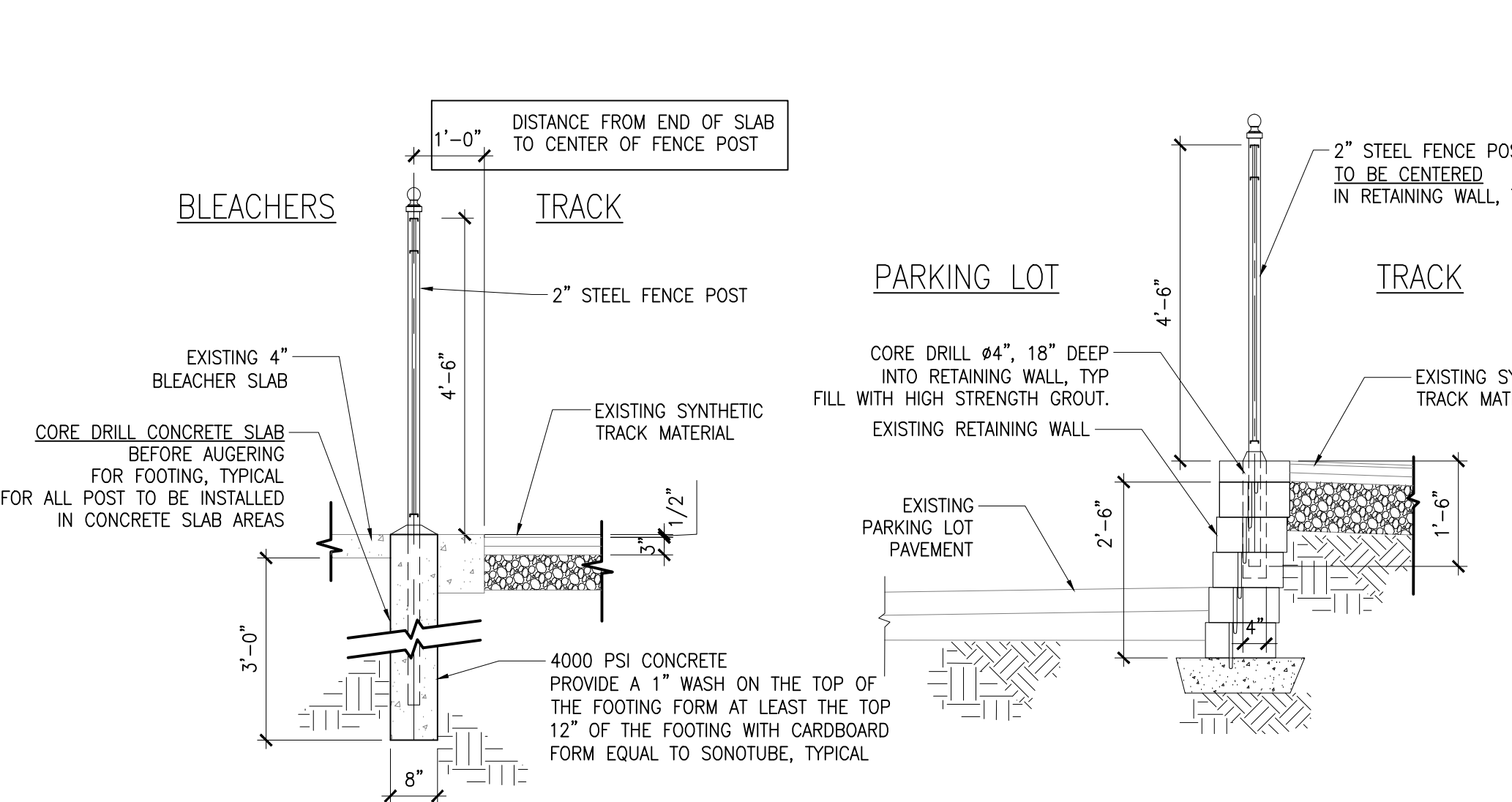
9 TYPICAL FENCE ELEVATION @ PAVEMENT AREAS
SCALE: 1/2"= 1'-0"



8 TYPICAL FENCE ELEVATION @ RETAINING WALL 1
SCALE: 1/2"= 1'-0"

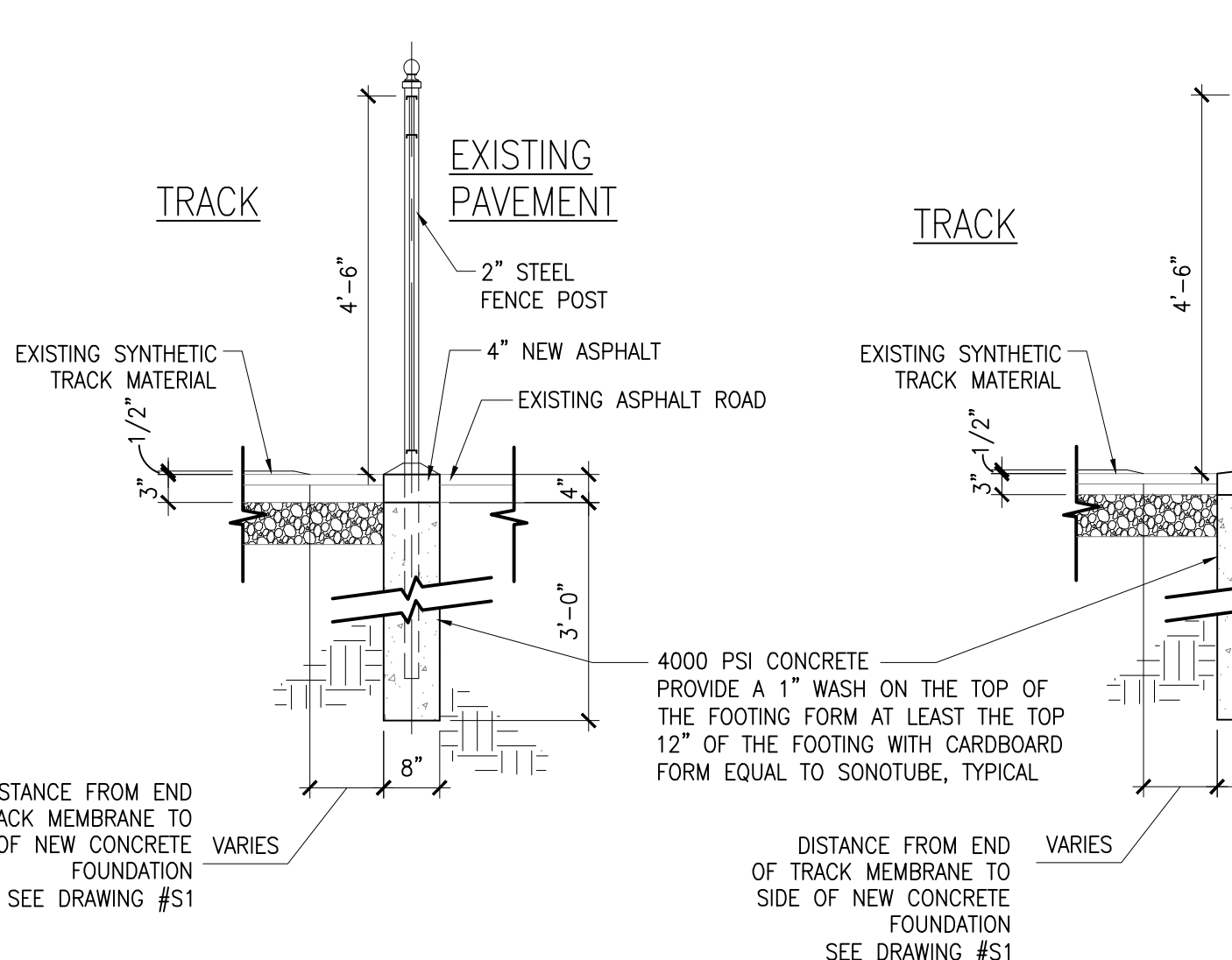


7 TYPICAL FENCE ELEVATION @ RETAINING WALL 2 @ 3
SCALE: 1/2"= 1'-0"

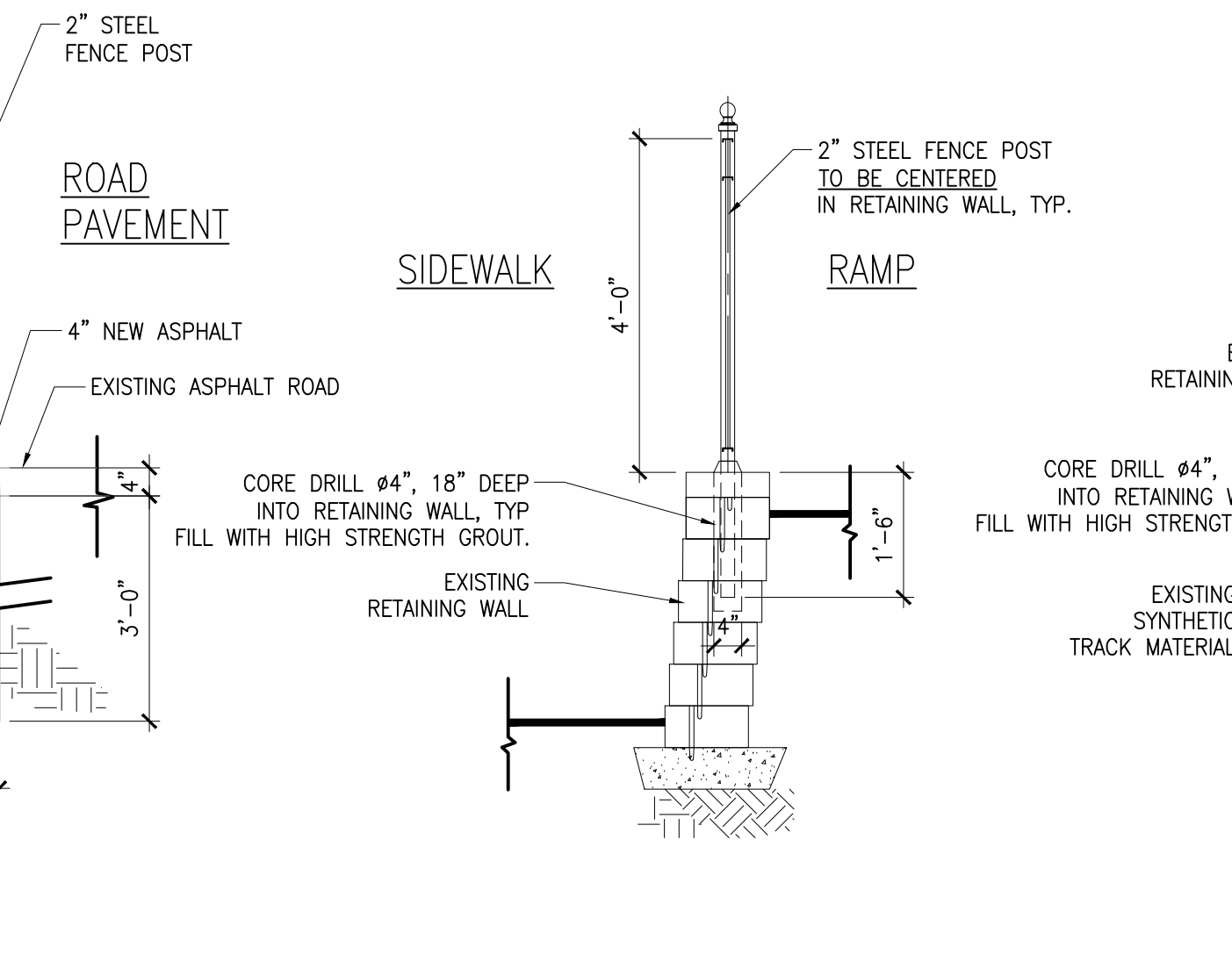


6 FENCE DETAIL @ CONCRETE SLAB
SCALE: 1/2"= 1'-0"

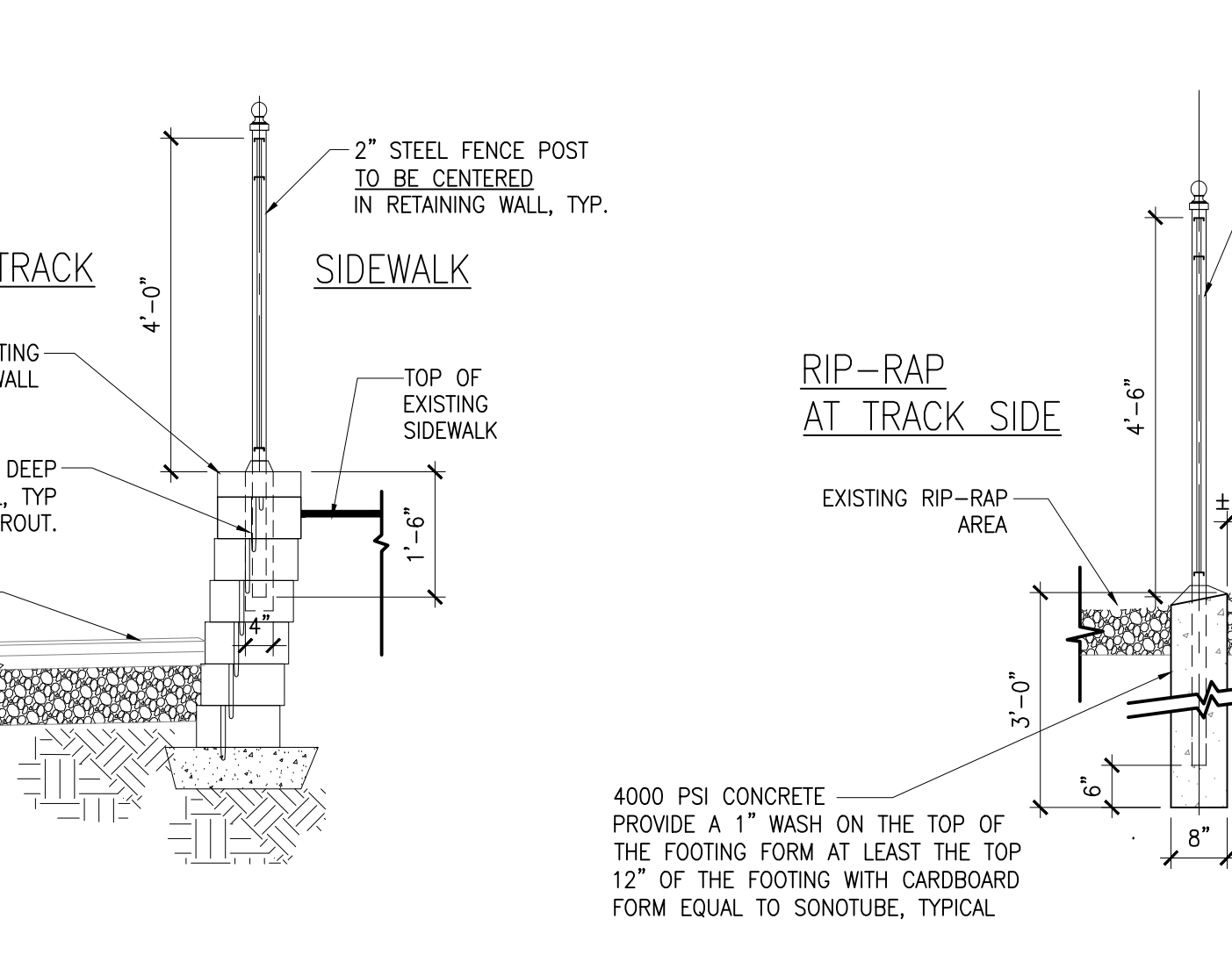
5 FENCE DETAIL @ RET. WALL 1
SCALE: 1/2"= 1'-0"



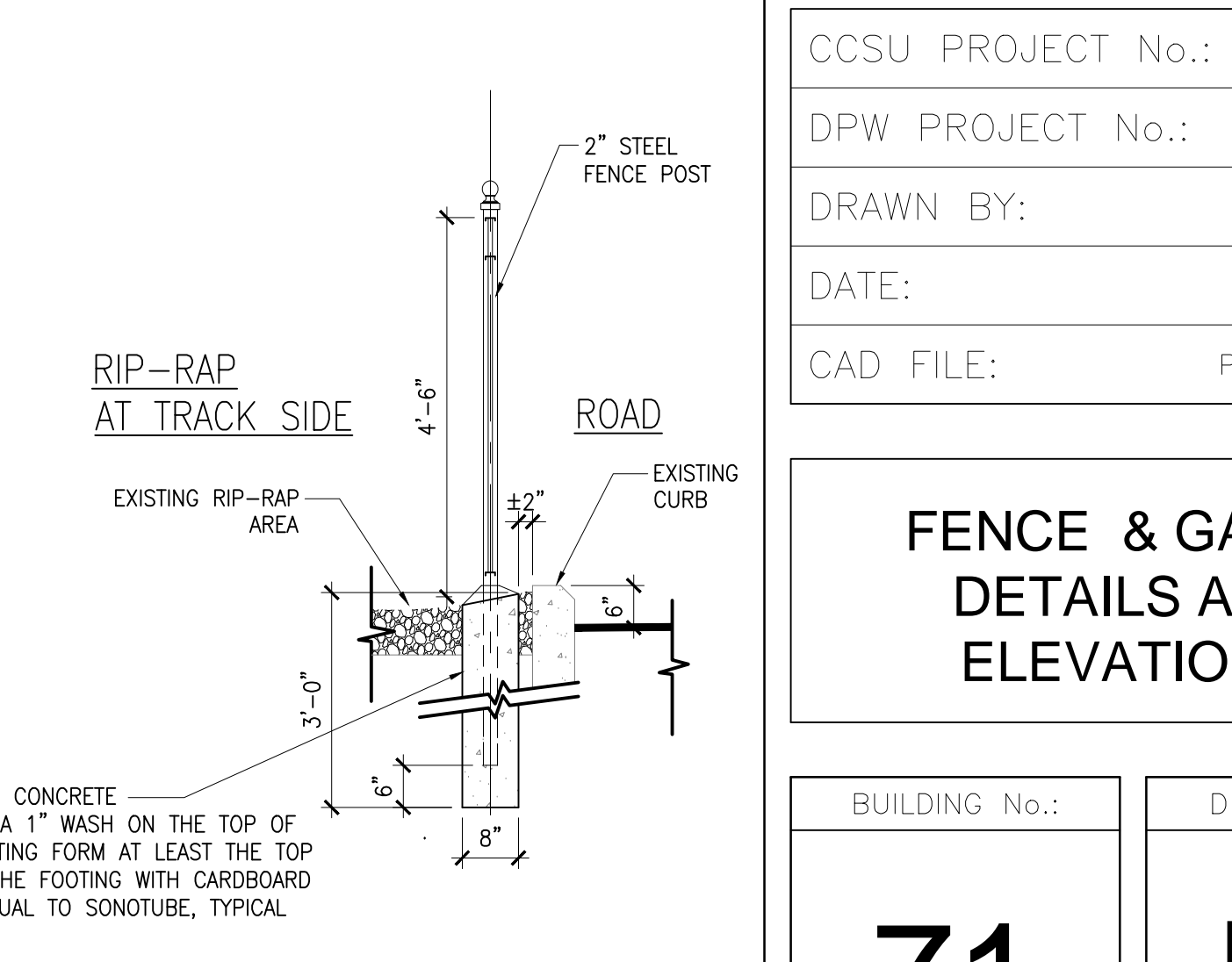
4 FENCE DETAIL @ PAVEMENT 2 & 3
SCALE: 1/2"= 1'-0"



3 FENCE DETAIL @ PAVEMENT 1
SCALE: 1/2"= 1'-0"



2b FENCE DETAIL @ RET. WALL 2
SCALE: 1/2"= 1'-0"



2a FENCE DETAIL @ RET. WALL 3
SCALE: 1/2"= 1'-0"

1 FENCE DETAIL BESIDES CURB
SCALE: 1/2"= 1'-0"

Central Connecticut State University



1615 Stanley Street
New Britain, CT 06050

REVISIONS

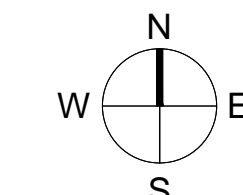
NUMBER	DATE	DESCRIPTION
#1	10/29/14	ADDENDUM #1

TRACK AND SOCCER FIELDS

TRACK & SOCCER FIELD FENCING

KEY PLAN

NOT TO SCALE



CCSU PROJECT No.:	71-H
DPW PROJECT No.:	---
DRAWN BY:	NS
DATE:	09/01/14
CAD FILE:	P:\...-...-...DWG

FENCE & GATES DETAILS AND ELEVATIONS

BUILDING No.: DRAWING No.:

71

D1