

CHEMISTRY
FUME HOOD REPLACEMENT

CONARD HIGH SCHOOL

110 BEECHWOOD ROAD
WEST HARTFORD, CT 06107

ISSUED FOR BIDDING JANUARY 28, 2019

ARCHITECT:

bostwick ARCHITECTS, LLC
73 Woodland Road
Rocky Hill, Connecticut 06067
(860)570-0869

DRAWING LIST:

A-1.0 DEMOLITION PLAN, FLOOR PLAN, REFLECTED CEILING PLAN, WALL TYPES, CEILING SECTION
A-2.0 INTERIOR AND EXTERIOR ELEVATIONS, FINISH SCHEDULE
MPFP-1 PARTIAL SECOND FLOOR PLAN, MEP ENLARGED PLANS

MEP ENGINEER:

RZ Design Associates, Inc.
Mechanical and Electrical Engineering
750 Old Main Street, Suite 202
Rocky Hill, Connecticut 06067
(860)436-4336

Chemistry Fume Hood Replacement

Conard High School
110 Beechwood Road
West Hartford, Connecticut 06107

consultants

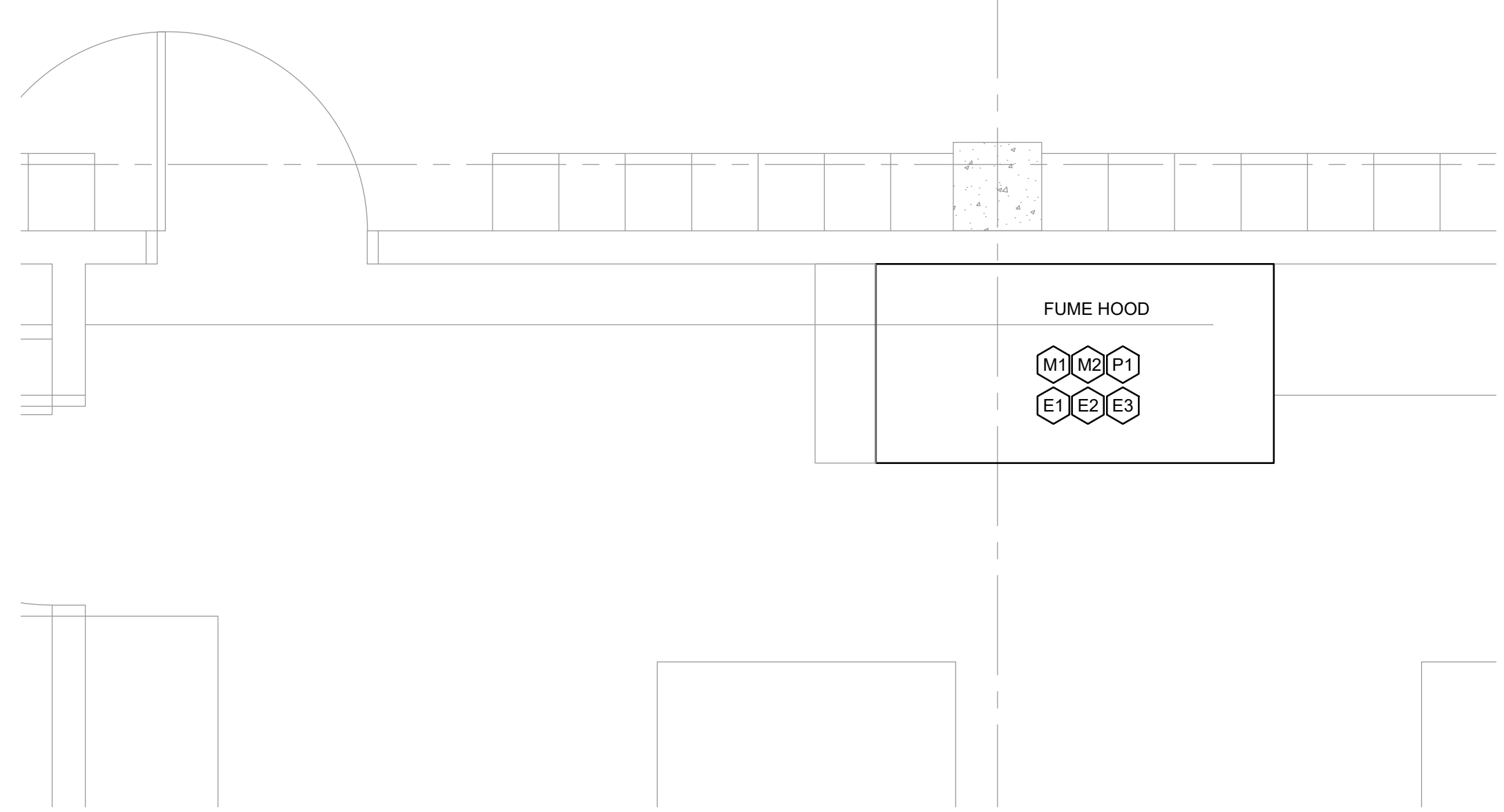
bostwick
ARCHITECTS, LLC
73 Woodland Road
Rocky Hill, CT 06067
tel: 860.570.0869

architecture + interior design + environmental design
© BOSTWICK ARCHITECTS, LLC

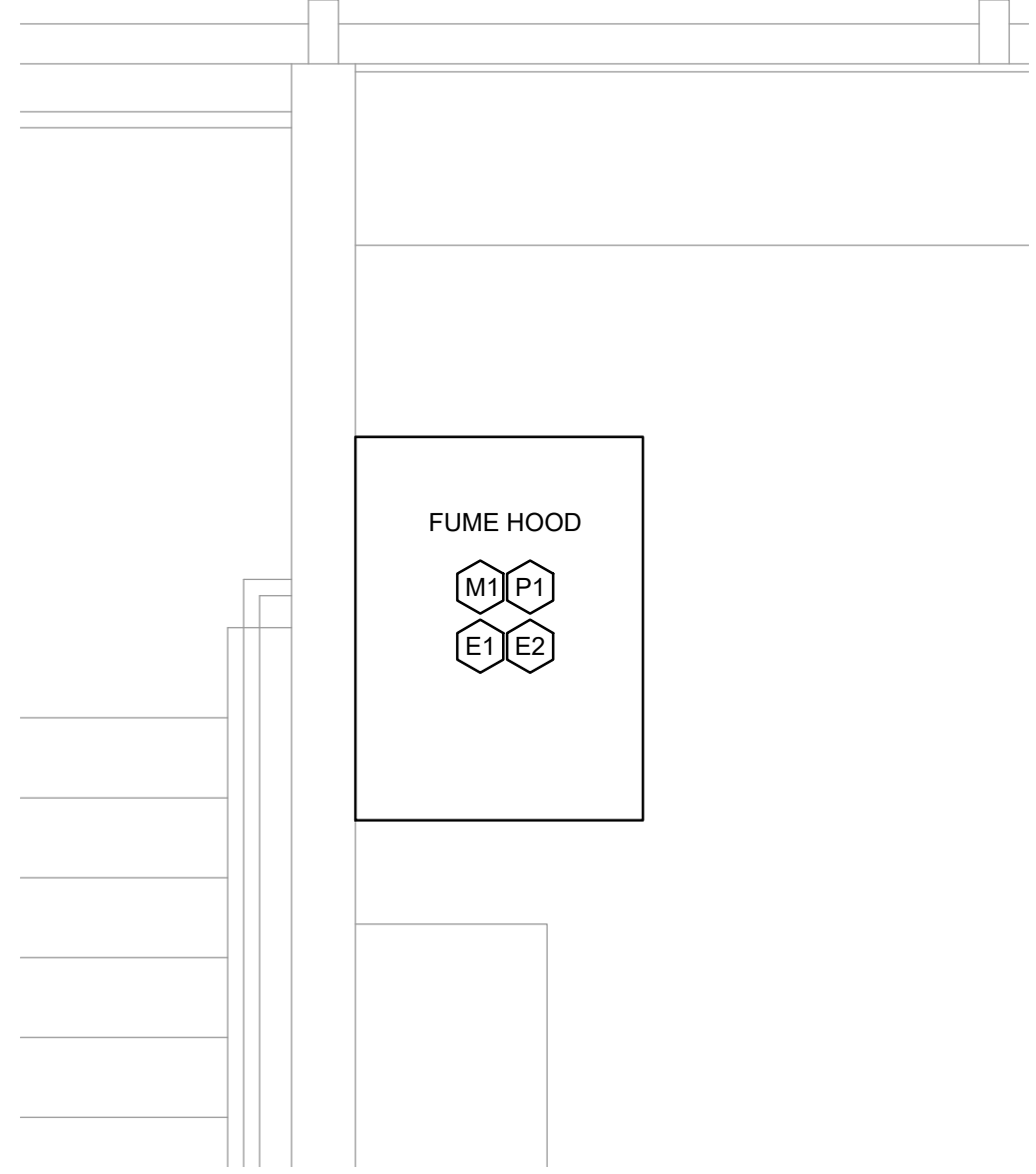
consultants

MEP/FP ENGINEERS:

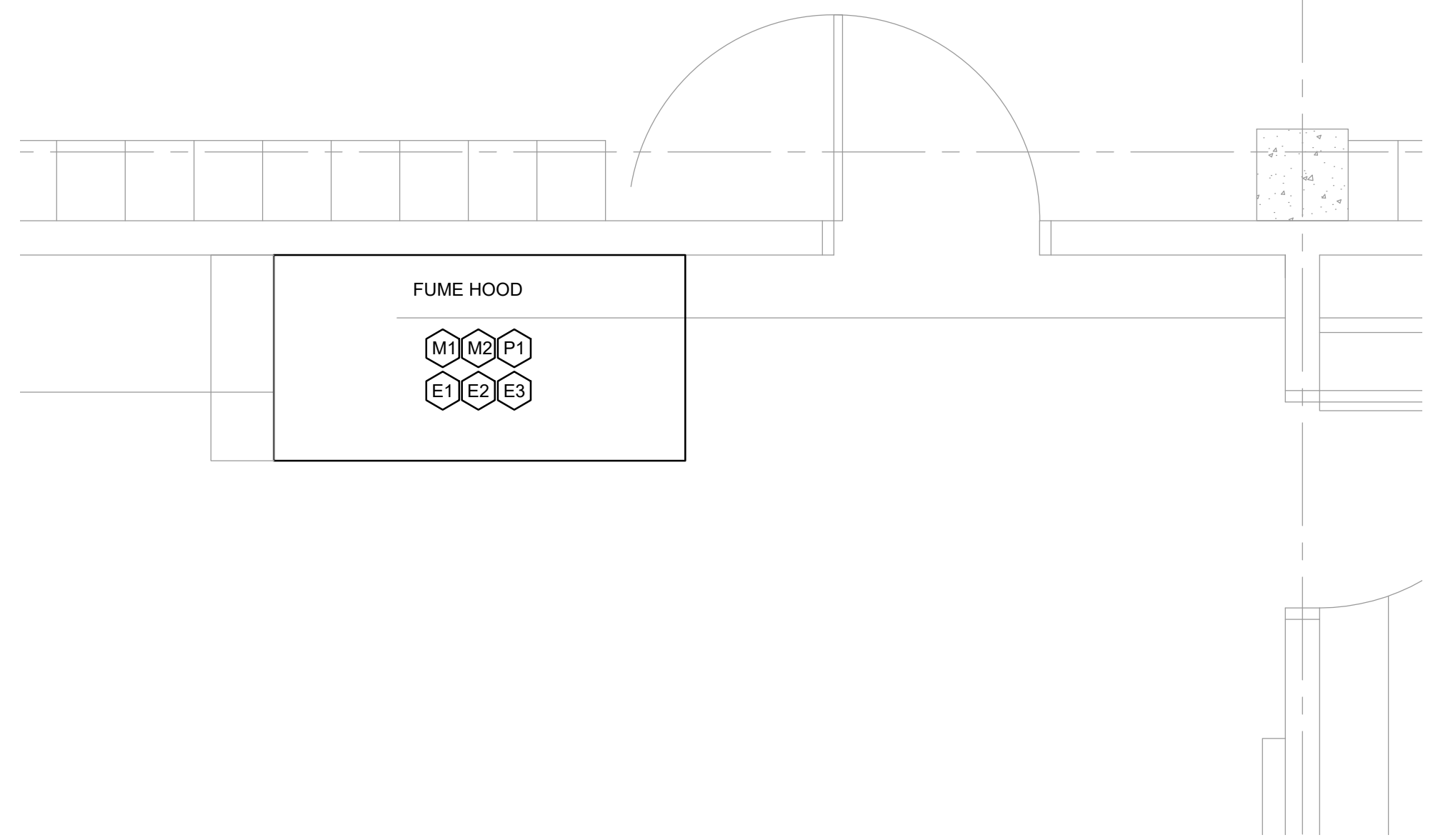
RZ Design Associates, Inc.
MECHANICAL AND ELECTRICAL
ENGINEERING
750 OLD MAIN STREET
SUITE 202
ROCKY HILL, CT 06067
P: (860) 436-4338
F: (860) 436-4650
www.rzdesignassociates.com



2 LAB HOOD PLACEMENT - CHEMISTRY LAB - 231
MEP-1 SCALE: 1/2" - 1'-0"



3 LAB HOOD PLACEMENT - CHEMISTRY LAB - 232
MEP-1 SCALE: 1/2" - 1'-0"



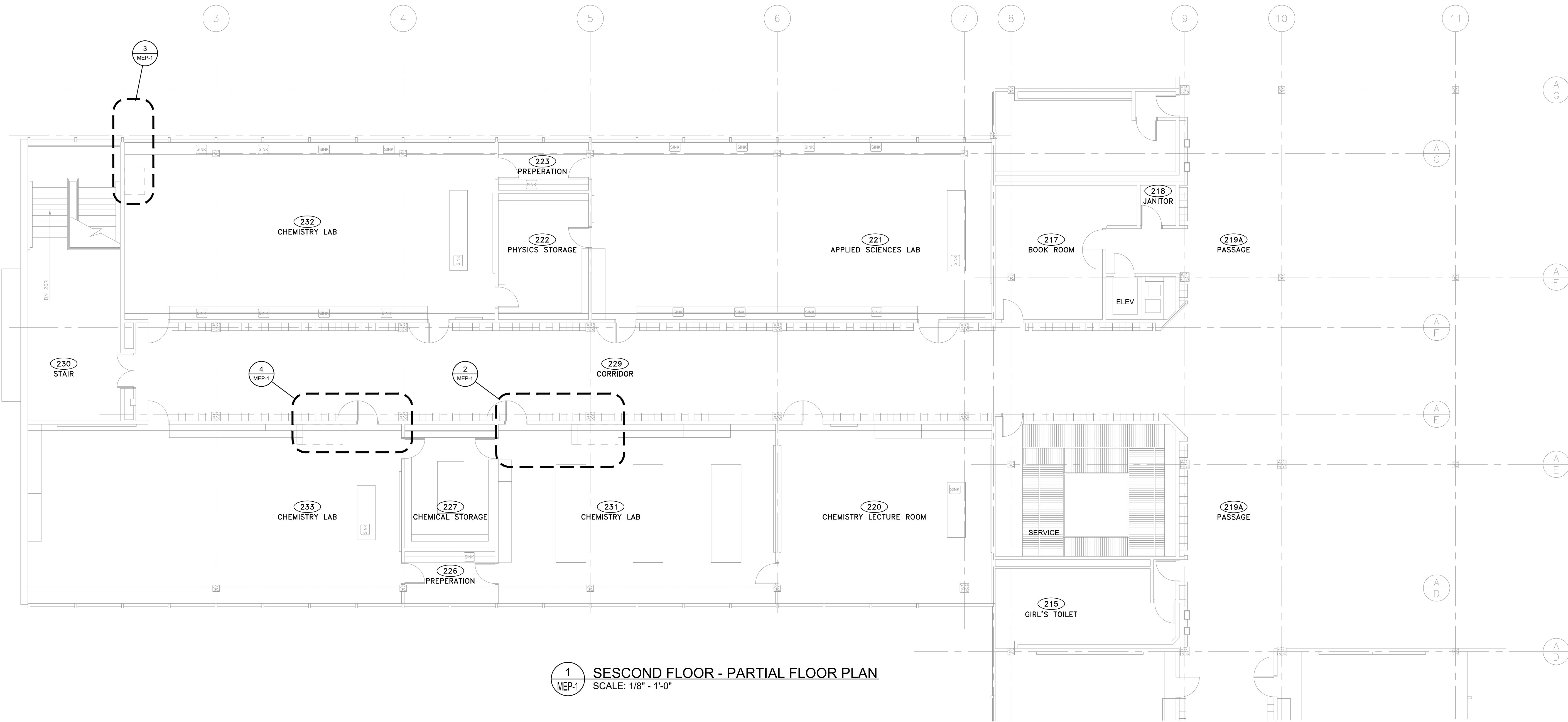
4 LAB HOOD PLACEMENT - CHEMISTRY LAB - 233
MEP-1 SCALE: 1/2" - 1'-0"

MATERIAL SPECIFICATIONS:

1. NEW ELECTRICAL CONDUCTORS SHALL BE SOFT ANNEALED COPPER WITH TYPE THWN INSULATION, INSTALLED IN RACEWAY.
2. NEW ELECTRICAL RACEWAYS SHALL BE ELECTRICAL METALLIC TUBING (EMT), MINIMUM 3/4" SIZE. SECURELY FASTEN RACEWAYS PER NEC SECTION 358. ALL RACEWAYS SHALL BE CONCEALED IN WALLS AND CEILING. OBTAIN APPROVAL OF THE ARCHITECT IF RACEWAY MUST BE EXPOSED.
3. PROVIDE GALVANIZED, SHEET STEEL JUNCTION BOXES WITH REMOVABLE COVERS AT JUNCTION POINTS OF ELECTRICAL CIRCUITS.
4. DOMESTIC WATER PIPING SHALL BE ASTM B88, TYPE "L" COPPER WITH CAST BRONZE OR WROUGHT COPPER SWEAT FITTINGS USING 95/5 SOLDER (LEAD FREE).
5. ACID WASTE AND VENT PIPING SHALL BE FLAME RETARDANT POLYPROPYLENE WITH ELECTRICAL RESISTANCE FUSION JOINTS.
6. NATURAL GAS PIPING SHALL BE ASTM A53 SCHEDULE 40 STEEL PIPE WITH ASME B16.3 MALLEABLE IRON THREADED FITTINGS.

MEP KEYNOTES:

- | | |
|---|--|
| <p>M1 DISCONNECT FUME HOOD FROM EXHAUST DUCTWORK; CONNECT NEW FUME TO EXISTING EXHAUST DUCTWORK. VERIFY FINAL CONNECTIONS IN THE FIELD.</p> <p>M2 DISCONNECT FUME HOOD FROM SUPPLY AIR DUCTWORK; CAP SUPPLY AIR DUCTWORK.</p> <p>P1 DISCONNECT NATURAL GAS, DOMESTIC COLD WATER, AND ACID WASTE PIPING; CONNECT NEW FUME HOOD TO EXISTING NATURAL GAS, DOMESTIC COLD WATER AND ADIC WASTE PIPING. PROVIDE NEW ACID WASTE P-TRAP. VERIFY FINAL CONNECTIONS IN THE FIELD. CONTRACTOR SHALL PROVIDE ALL REQUIRED HARDWARE AND FITTING TO COMPLETE INSTALLATION. PROVIDE NEW ISOLATION VALVES.</p> | <p>E1 DISCONNECT FUME HOOD ELECTRICAL CIRCUIT. CONNECT NEW FUME HOOD TO EXISTING ELECTRICAL CIRCUIT (EXTEND CIRCUIT AS REQUIRED.)</p> <p>E2 DISCONNECT FUME HOOD EXHAUST FAN CONTROL CIRCUIT. CONNECT NEW FUME HOOD TO EXISTING EXHAUST FAN CONTROL CIRCUIT (EXTEND CIRCUIT AS REQUIRED.)</p> <p>E3 DISCONNECT AND REMOVE FUME HOOD SUPPLY FAN CONTROL CIRCUIT.</p> |
|---|--|



1 SECOND FLOOR - PARTIAL FLOOR PLAN
MEP-1 SCALE: 1/8" - 1'-0"

CADD INFORMATION VIEW:
FILE NAME:
DATE AND TIME PLOTTED:
PLOTTED BY:

issues + revisions:

no.	date	issued
1	01.28.19	BIDDING
2		
3		
4		
5		
6		
7		
8		

project: 1804.00
drawn by: PA/DL
scale: AS NOTED

sheet:
PARTIAL SECOND
FLOOR PLAN,
MEP ENLARGED
PLANS

MEP-1

Chemistry Fume Hood Replacement

Conard High School
110 Beechwood Road
West Hartford, Connecticut 06107

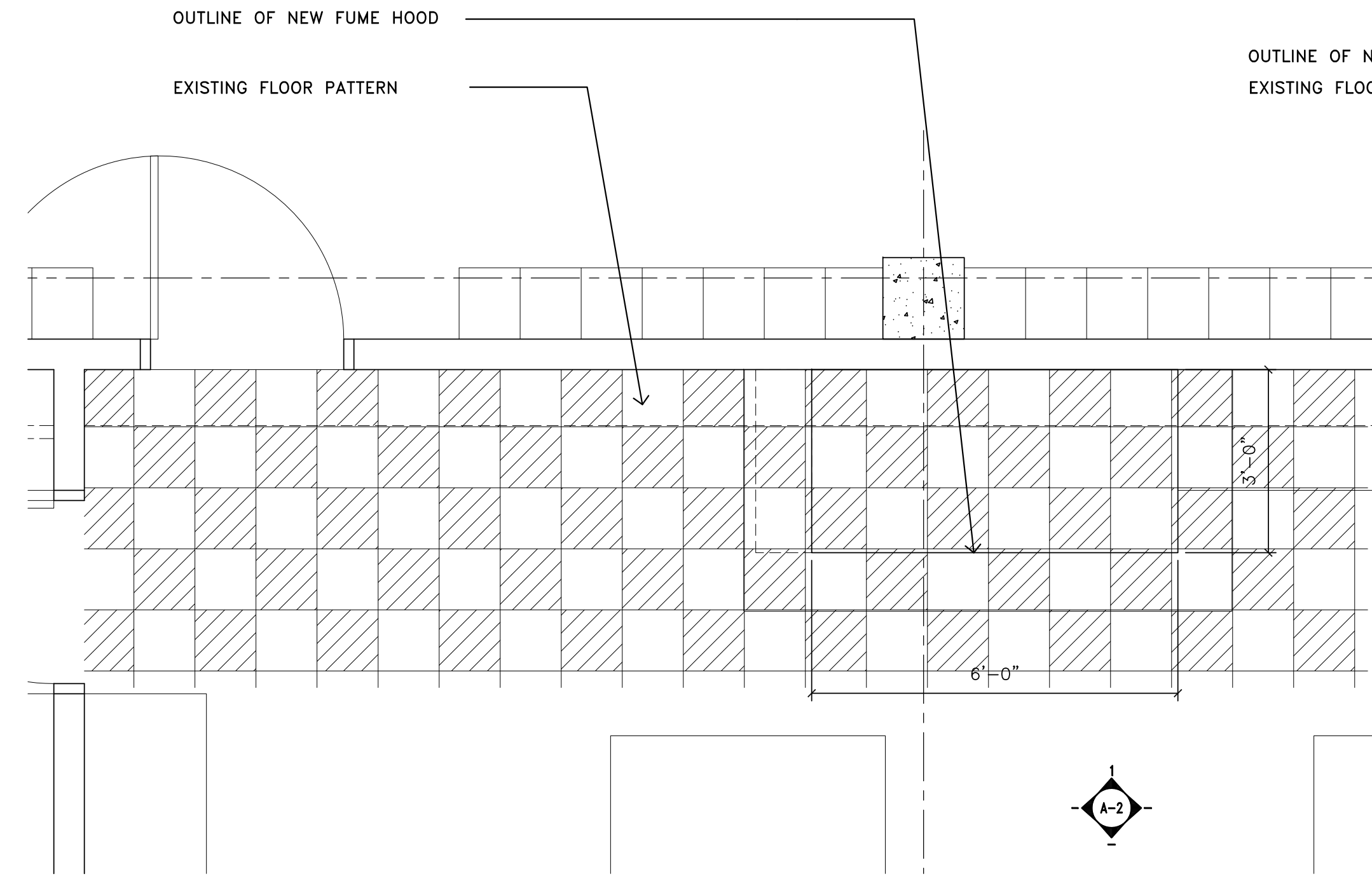
consultants

bostwick
ARCHITECTS, LLC
73 Woodland Road
Rocky Hill, CT 06067
tel: 860.570.0869

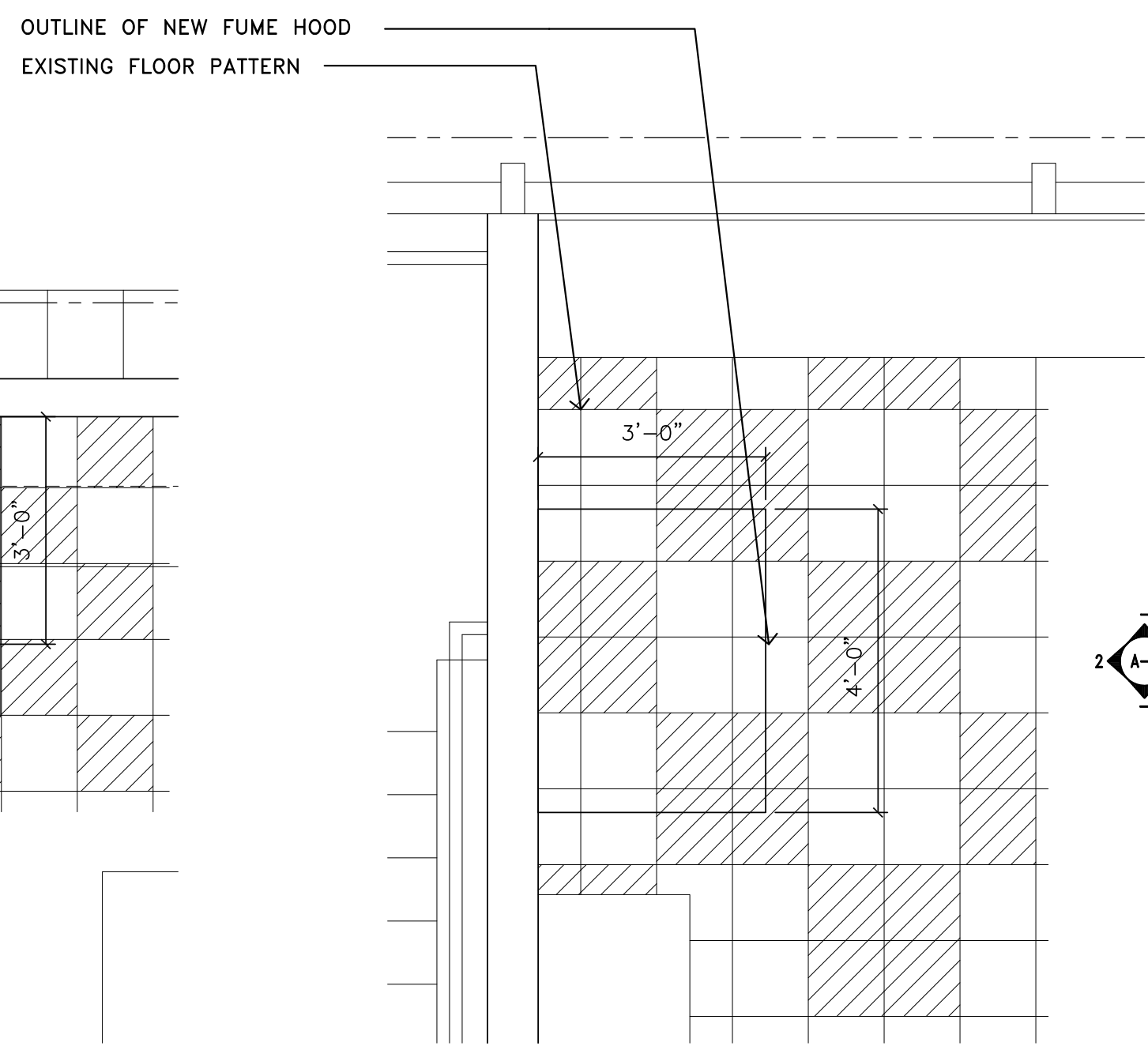
architecture • interior design • environmental design
BOSTWICK ARCHITECTS, LLC

consultants

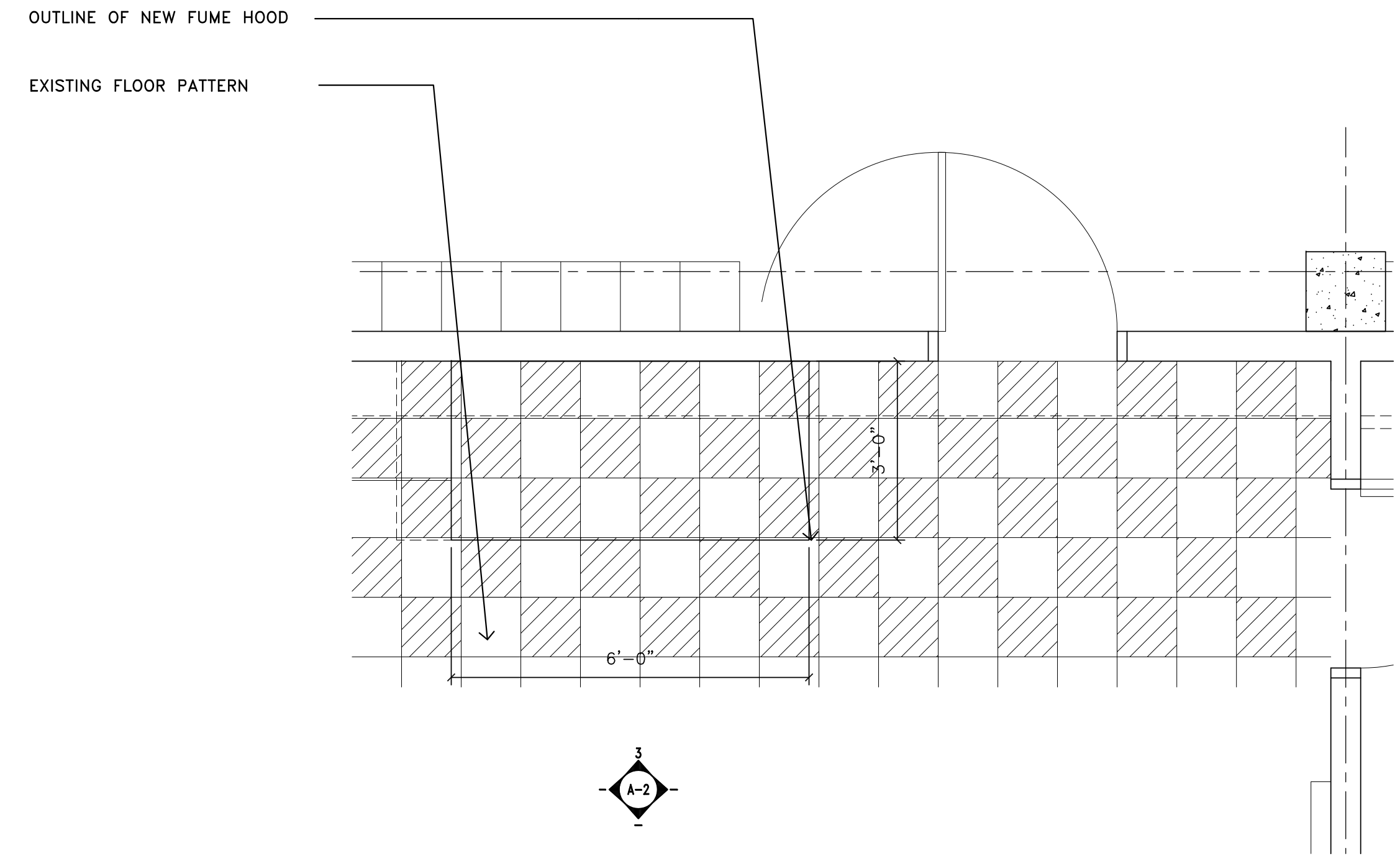
MEP/FP ENGINEERS:
RZ Design Associates, Inc.
MECHANICAL AND ELECTRICAL
ENGINEERING
750 OLD MAIN STREET
SUITE 302
ROCKY HILL, CT 06067
P: (860) 436-4336
F: (860) 436-4400
www.rzdesignassociates.com



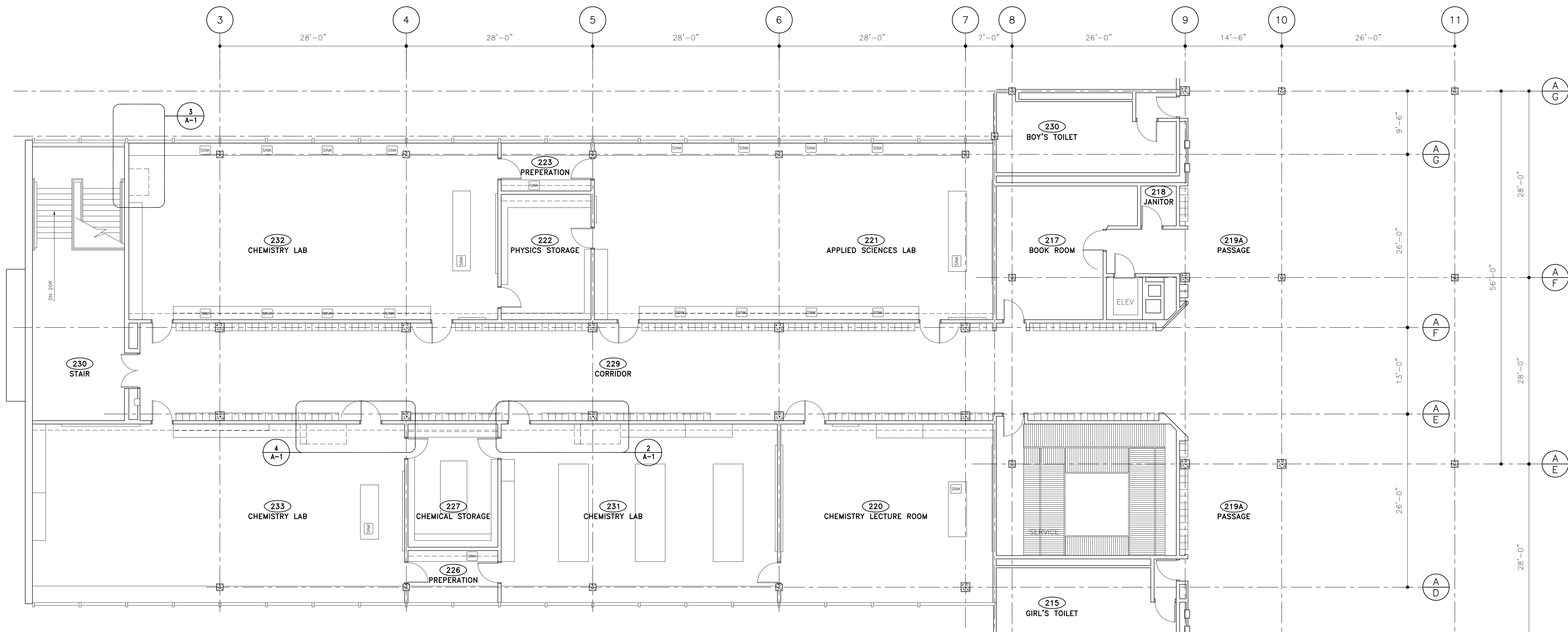
LAB HOOD PLACEMENT
2 CHEMISTRY LAB - 231
1/2"=1'-0"



LAB HOOD PLACEMENT
3 CHEMISTRY LAB - 232
1/2"=1'-0"



LAB HOOD PLACEMENT
3 CHEMISTRY LAB - 233
1/2"=1'-0"



SECOND FLOOR
1 PARTIAL FLOOR PLAN
1/8"=1'-0"

CADD INFORMATION VIEW:
FILE NAME:
DATE AND TIME PLOTTED:
PLOTTED BY:

issues + revisions:

no.	date	issued
1	01.28.19	BIDDING
2		
3		
4		
5		
6		
7		
8		

project: 1804.00
drawn by: JKB
scale: AS NOTED

sheet:
PARTIAL SECOND
FLOOR PLAN,
ENLARGED PLANS

Chemistry Fume Hood Replacement

Conard High School
110 Beechwood Road
West Hartford, Connecticut 06107

consultants

bostwick

ARCHITECTS, LLC
73 Woodland Road
Rocky Hill, CT 06067
tel: 860.570.0869

architecture • interior design • environmental design
© bostwick-architects, llc

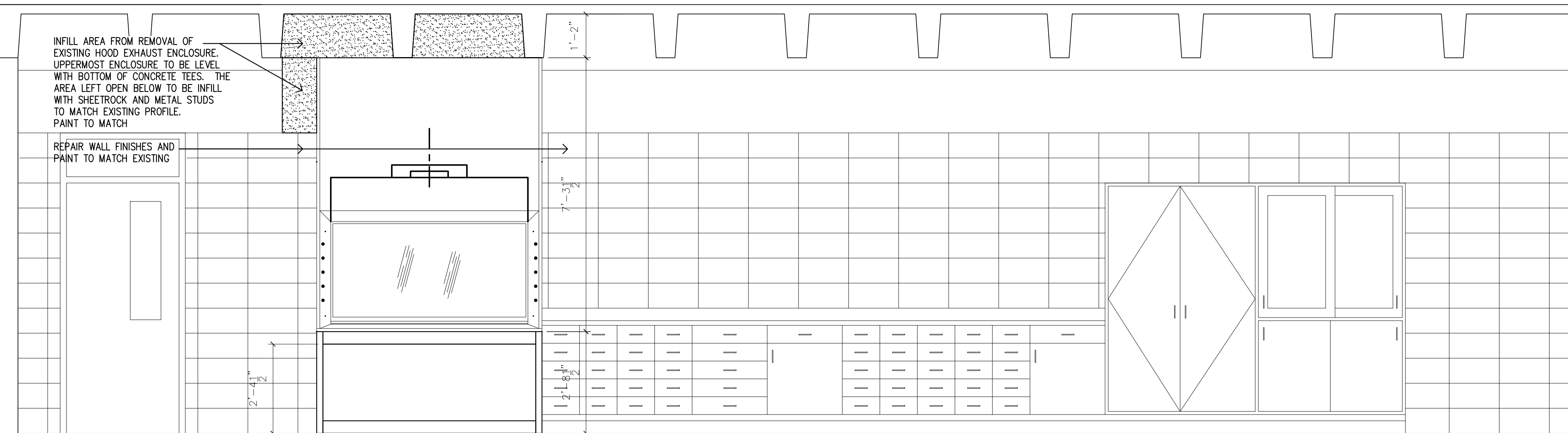
consultants

MEP/FP ENGINEERS:

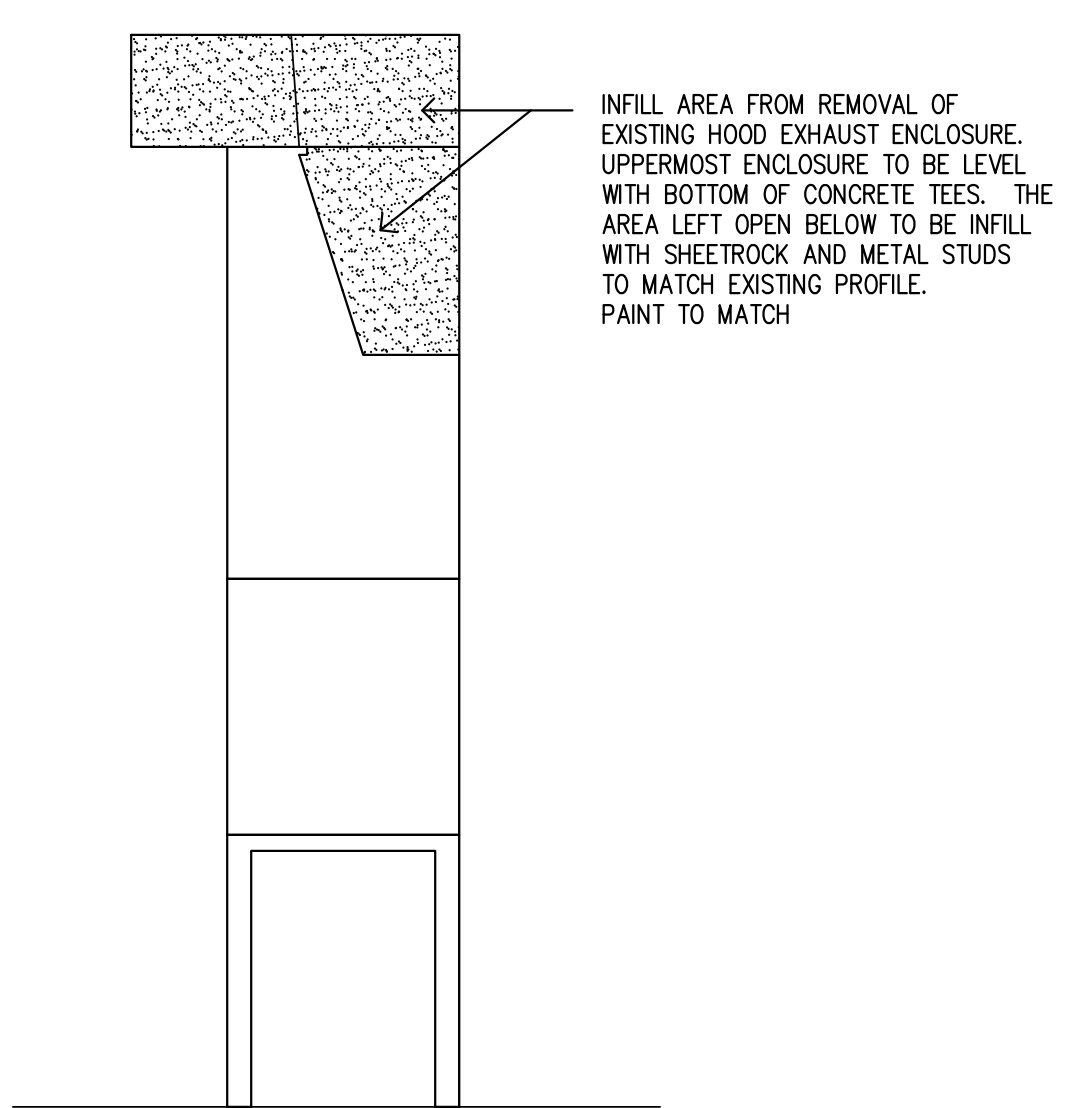
RZ Design Associates, Inc.
MECHANICAL AND ELECTRICAL ENGINEERING
750 OLD MAIN STREET
SUITE 202
ROCKY HILL, CT 06067
P: (860) 436-4336
F: (860) 436-4400
www.rzdesignassociates.com

CONSTRUCTION NOTES

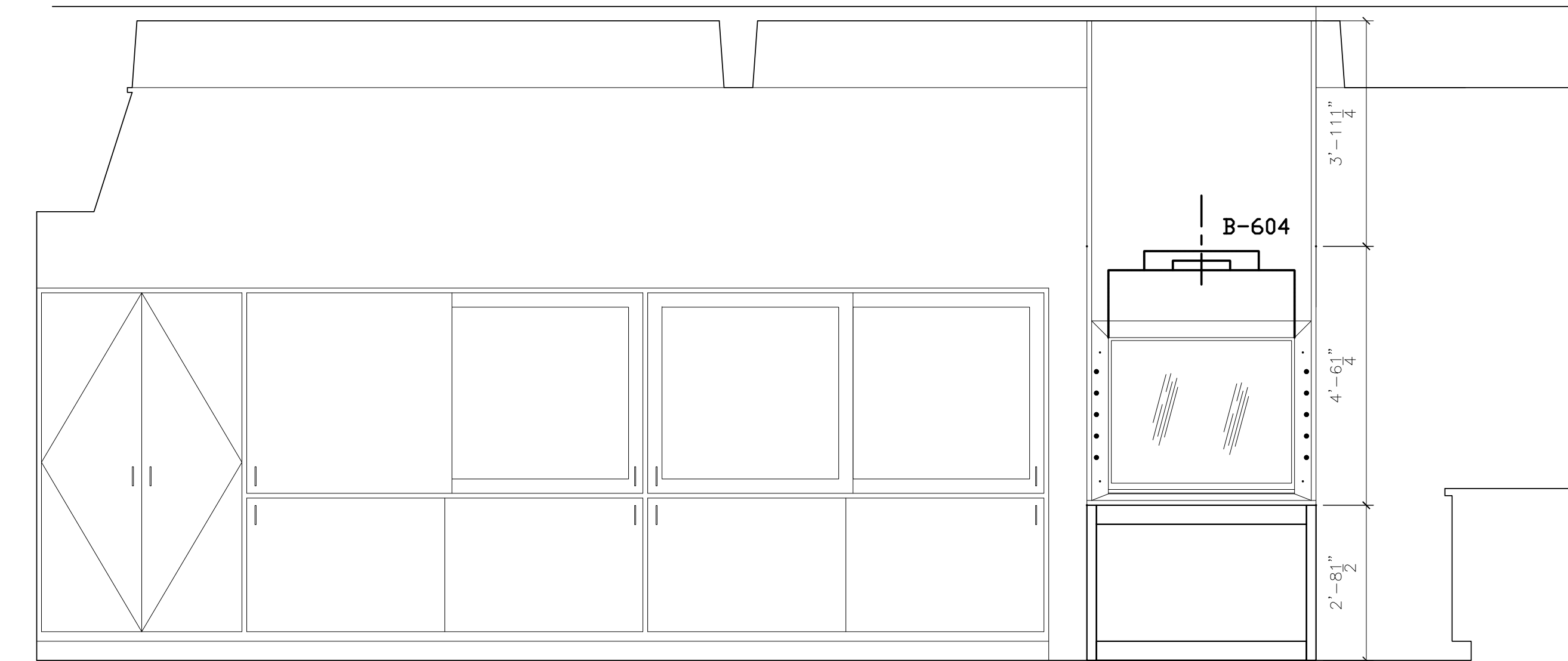
- ALL WORK SHALL BE PERFORMED IN STRICT ACCORDANCE WITH ALL NATIONAL, STATE AND LOCAL CODES AND ORDINANCES.
- DO NOT SCALE DRAWINGS. THE CONTRACTOR SHALL BE RESPONSIBLE FOR OBTAINING CLARIFICATION OF DIMENSIONS FROM THE ARCHITECT BEFORE CONTINUING WITH CONSTRUCTION.
- CONTRACT DRAWINGS MAY VARY FROM ACTUAL FIELD CONDITIONS. CONTRACTOR SHALL CORRECT DIMENSIONS OF ALL MATERIALS TO CARRY OUT THE INTENT OF THE CONTRACT DRAWINGS. VERIFY ALL DIMENSIONS AND EXISTING CONDITIONS IN THE FIELD BEFORE ORDERING ANY MATERIALS. CONTRACTOR SHALL NOTIFY THE ARCHITECT PROMPTLY OF ANY CRITICAL DISCREPANCIES BEFORE PROCEEDING WITH WORK.
- ALL NEW WORK SHALL BE IMPLEMENTED SO AS TO PROVIDE A SMOOTH AND CONTINUOUS SURFACE WITH ALL EXISTING CONDITIONS. CONTRACTOR SHALL BE RESPONSIBLE FOR ALL WORK NECESSARY TO ACHIEVE THIS REQUIREMENT. EVEN THOUGH PROCEDURES ARE NOT DETAILED FOR EACH SPECIFIC CONDITION OR COMBINATION OF CONDITIONS, QUALITY OF WORKMANSHIP, MATERIALS AND FINISHES SHALL BE EQUAL TO THE LEVEL ESTABLISHED FOR SIMILAR CONSTRUCTION, EXCEPT WHERE EXISTING APPEARANCE IS TO BE MATCHED TO ACHIEVE CONTINUITY.
- CUTTING AND PATCHING SHALL BE THE RESPONSIBILITY OF THE TRADE WHOSE WORK RESULTS IN THE NEED FOR CUTTING AND PATCHING UNLESS A SPECIFIC CONTRACTOR IS CALLED OUT ON THE DRAWINGS. ALL HOLES LEFT BY REMOVING MECHANICAL, PLUMBING AND ELECTRICAL EQUIPMENT ETC SHALL BE PATCHED.
- CONTRACTOR SHALL BE RESPONSIBLE FOR DISPOSAL OF ALL CONSTRUCTION DEBRIS ACCORDING TO MUNICIPAL AND/OR STATE REGULATIONS. CONTRACTOR TO PROVIDE WRITTEN VERIFICATION OF PROPER DISPOSAL IF REQUESTED.
- CONTRACTOR IS RESPONSIBLE FOR ERECTING NECESSARY BARRIERS AND CLEAN UP OF JOB SITE.
- ALL AREAS DISTURBED DURING CONSTRUCTION SHALL BE RESTORED TO A LEVEL OF FINISH TO MATCH THAT OF THE NEW WORK.
- THE CONTRACTOR SHALL MAINTAIN ALL BUILDING SYSTEMS IN FULL OPERATING ORDER. ANY DISRUPTIONS TO SERVICES SHALL BE COORDINATED WITH THE OWNER.
- PRECAUTIONS SHALL BE TAKEN TO PROTECT ALL PERSONS DURING CONSTRUCTION.
- THE BUILDING WILL BE OCCUPIED DURING THE COURSE OF CONSTRUCTION. PARKING LOTS WILL ALSO BE OPEN TO THE PUBLIC. THE CONTRACTOR SHALL TAKE ALL PRECAUTIONS TO PROTECT VISITORS AND STAFF THROUGHOUT THE HOURS OF OPERATION. ALL FIRE SAFETY SYSTEMS SHALL REMAIN OPERATIONAL THROUGHOUT THE CONSTRUCTION.
- ALL PLUMBING, CONDUITS, WIRING AND DUCTWORK TO BE TERMINATED SHALL BE TAKEN BACK TO A POINT BEHIND WALLS, BELOW FLOORS AND ABOVE CEILINGS. ALL POINTS OF TERMINATION SHALL BE TIGHT AND ACCESSIBLE IF PROBLEMS ARISE. ABANDONED PIPING, DUCTWORK AND CONDUIT SHALL BE REMOVED IN ITS ENTIRETY.
- NEW DUCT ENCLOSURE TO BE CUT AND ASSEMBLED TO MATCH EXISTING CONTOURS OF THE STRUCTURE AND THE PIPING PASSING THROUGH THE ENCLOSURE. ALL JOINTS SHALL BE TIGHT AND FIELD CAULKED WITH SEALANT.
- NEW LAB FUME HOODS TO BE ASSEMBLED TO ACCOMMODATE AND MEET ADA REQUIRED CLEARANCES. STAND UNIT AND ENCLOSURE TO BE FINISHED IN E6328 OFF-WHITE.
- STRIP AND WAX FLOOR AREA WHERE EXISTING HOODS HAVE BEEN REMOVED.



INTERIOR ELEVATION
1 CHEMISTRY LAB - 231
1/2"=1'-0"

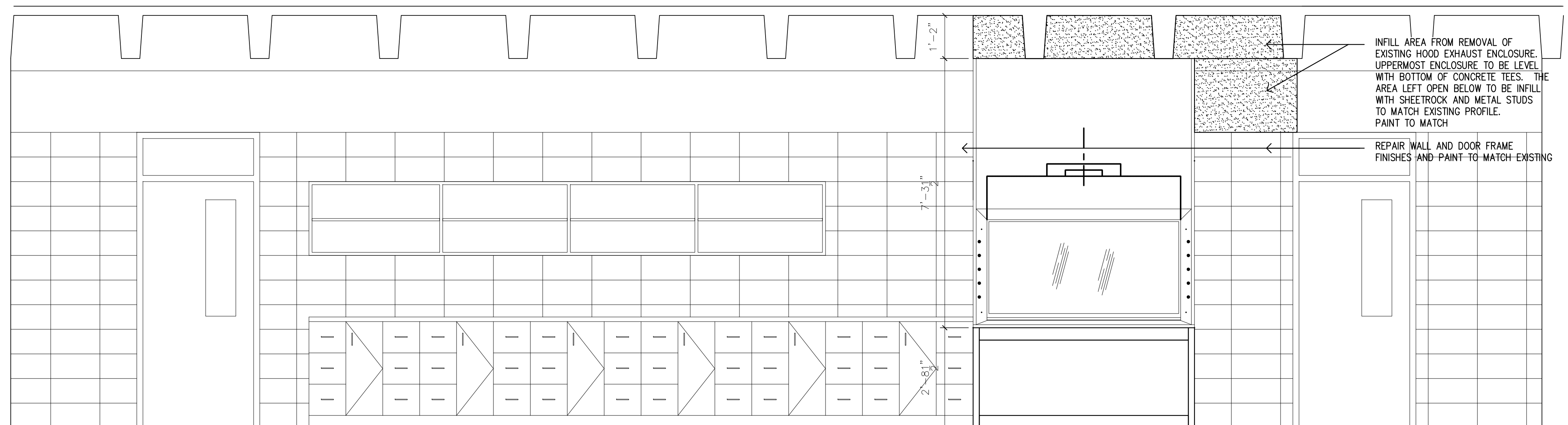


TYPICAL SIDE LAB HOOD
2 ELEVATION
1/2"=1'-0"



INTERIOR ELEVATION
2 CHEMISTRY LAB 232
1/2"=1'-0"

4'-0" APEX AIR FUME HOOD WITH GAS AND COLD WATER FIXTURES
ADA FUME HOOD STAND
AFA 500 LOW FLOW ALARM



INTERIOR ELEVATION
3 CHEMISTRY LAB - 233
1/2"=1'-0"

6'-0" APEX AIR FUME HOOD WITH GAS AND COLD WATER FIXTURES
ADA FUME HOOD STAND
AFA 500 LOW FLOW ALARM

CADD INFORMATION VIEW:
FILE NAME:
DATE AND TIME PLOTTED:
PLOTTED BY:

issues + revisions:

no.	date	issued
1	01.28.19	BIDDING
2		
3		
4		
5		
6		
7		
8		

project: 1804.00
drawn by: JKB
scale: AS NOTED

sheet:
FUME HOOD
ELEVATIONS,
DETAILS AND
NOTES