

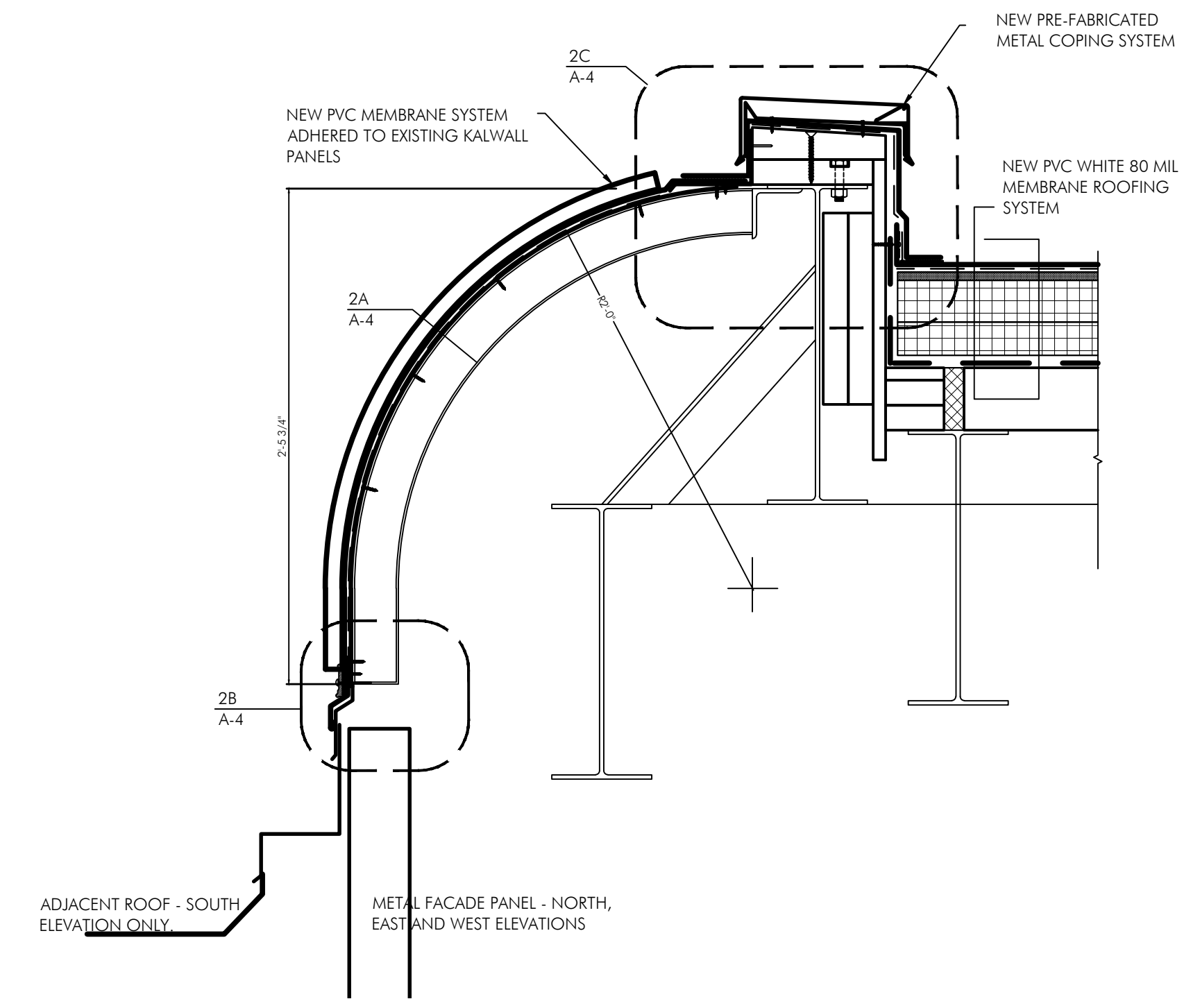
Revisions	
No.	Date
1	11/1/2019 PVC
2	1/3/2020 ADDEN #7

**The O'Neill Center
Roof Replacement Natatorium**
 WESTSIDE CAMPUS
 WESTERN CONNECTICUT STATE UNIVERSITY

**SKYLIGHT
DETAILS**

Agency
Project No. **BI-RD-311**
By: MAB
Scale: As Noted
Issue Date: 9/18/2019

A-4



1 SKYLIGHT DETAIL
SCALE: 1 1/2" = 1'-0"

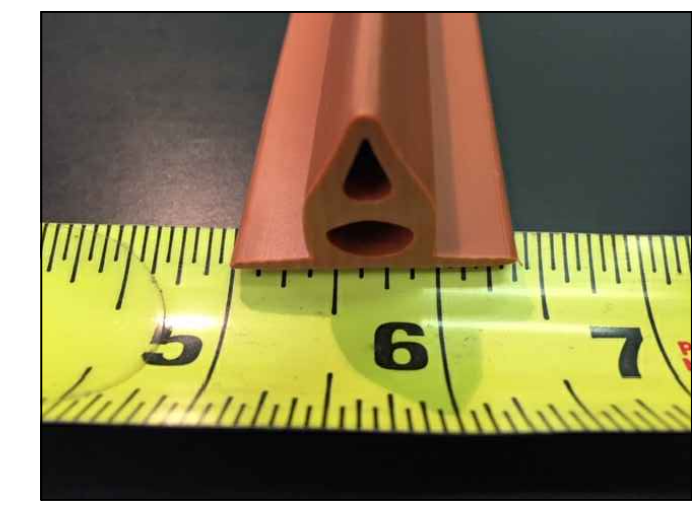
- NOTES:
1. CONTRACTOR TO PROVIDE SHOP DRAWINGS FOR LAYOUT, ALL SHEET METAL AND FLASHING..
 2. CONTRACTOR TO PERFORM TEST AREA TO VERIFY ADHESION OF MEMBRANE TO SUBSTRATE.
 3. VERIFY ALL DETAILS AND SPECIFICATIONS WITH MEMBRANE MANUFACTURER PRIOR TO INSTALLATION. NOTIFY ARCHITECT OF ANY CHANGES.
 4. ALL DIMENSIONS ARE APPROXIMATE. CONTRACTOR TO VERIFY ALL DIMENSIONS IN FIELD.
 5. COORDINATE SKYLIGHT WORK WITH ROOFING WORK.



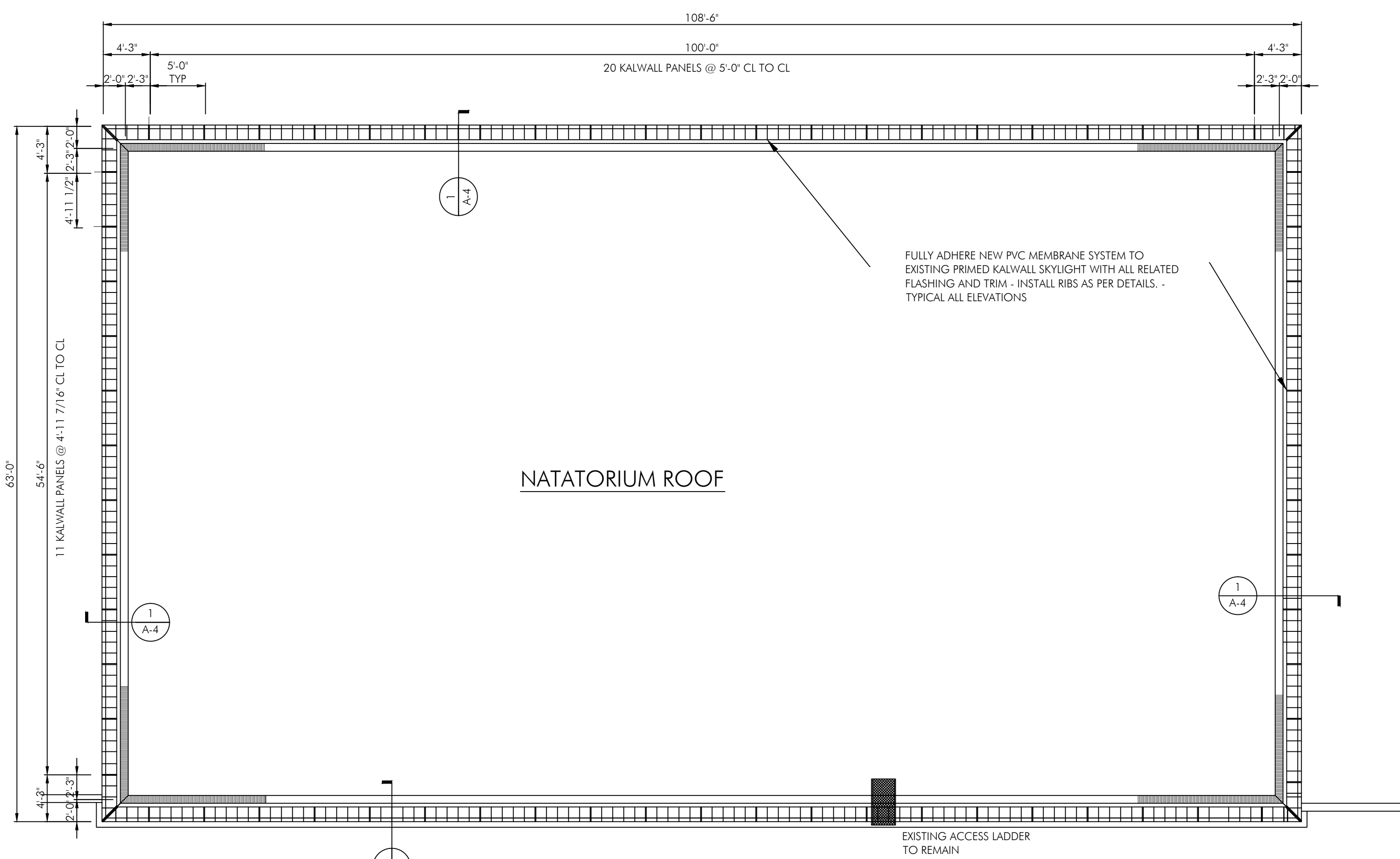
SKYLIGHT COPING



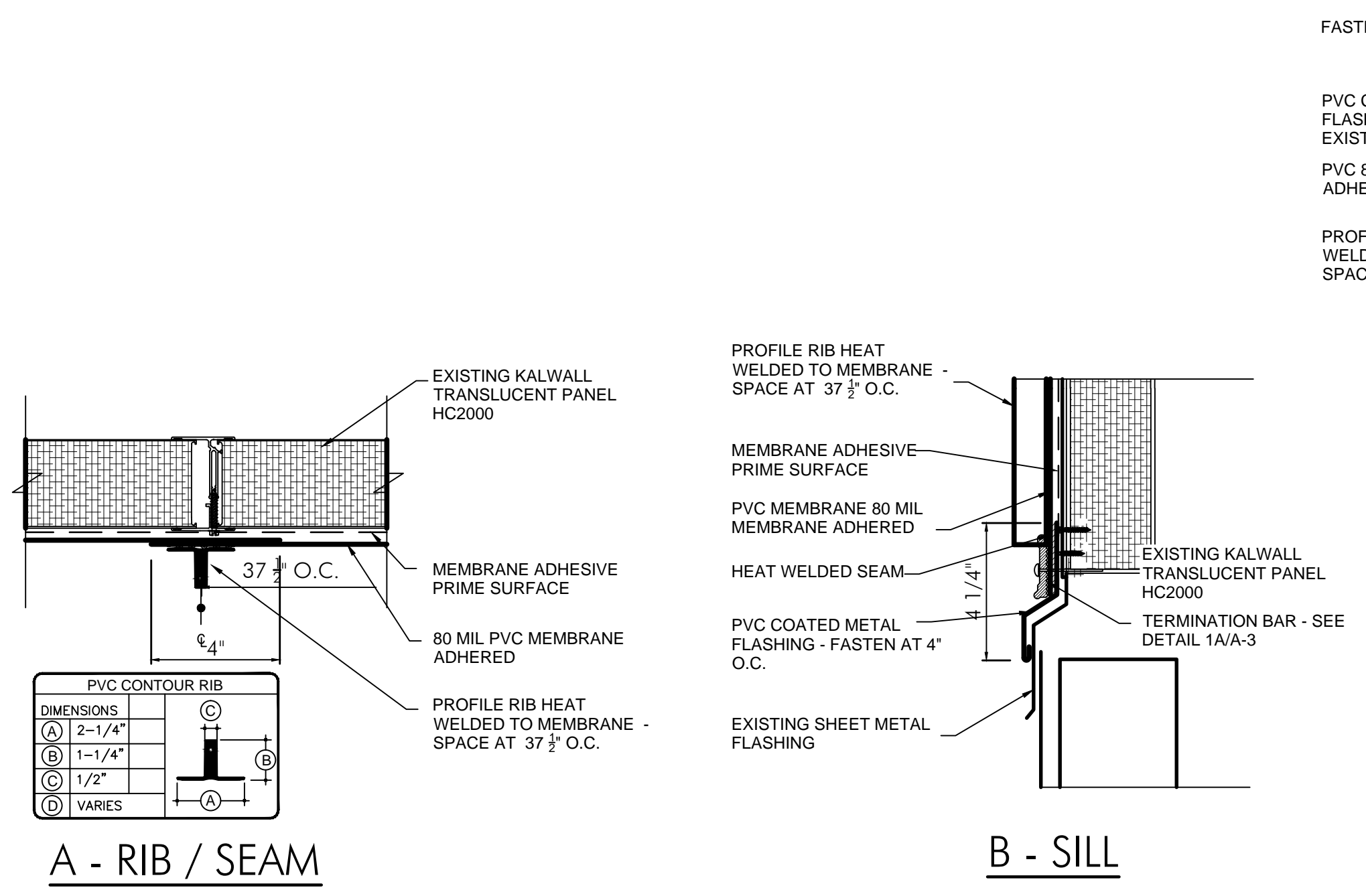
SKYLIGHT



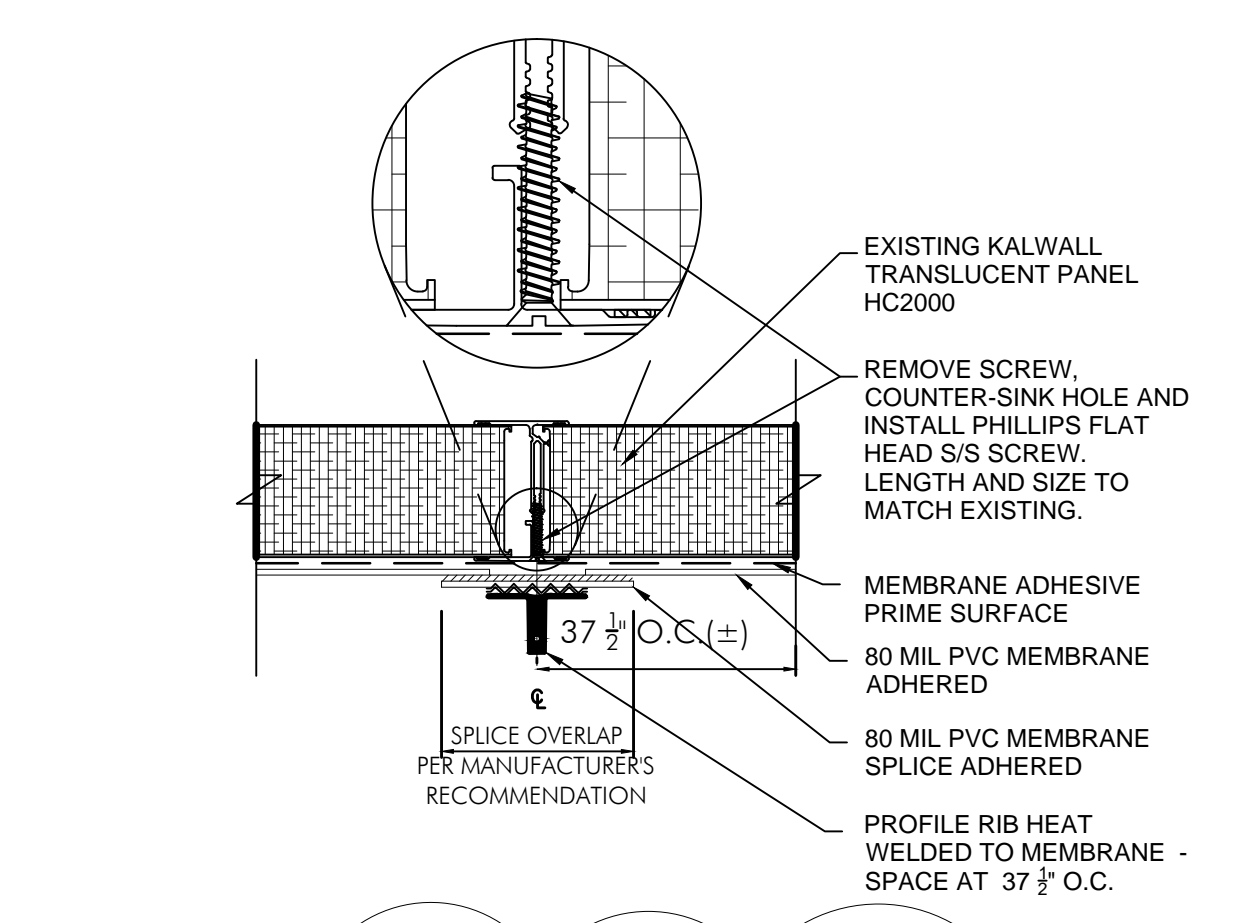
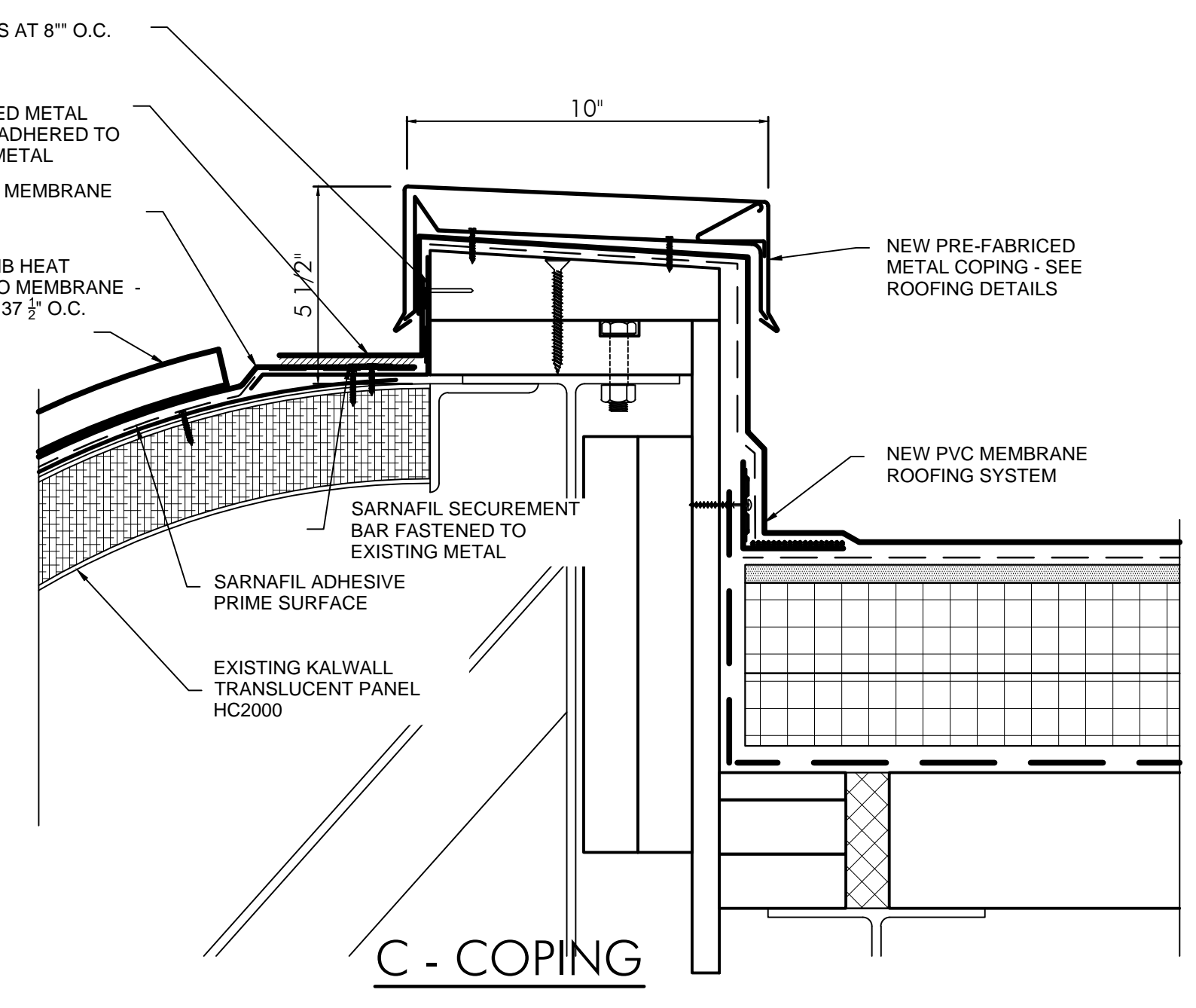
RIB PHOTO OF SARNIFIL DECO RIB PROFILE. CARLISLE SURE-FLEX PVC CONTOUR RIB - BASES OF DESIGN



3 ROOF PLAN
SCALE: 1/8" = 1'-0"



2 PVC DETAILS
SCALE: 3" = 1'-0"



3 PVC DETAIL - ADDENDUM
SCALE: 3" = 1'-0"

SUPPLEMENTAL BID NO. 1