

DRAWING

PLAN HOLD CORPORATION  
REORDER BY N

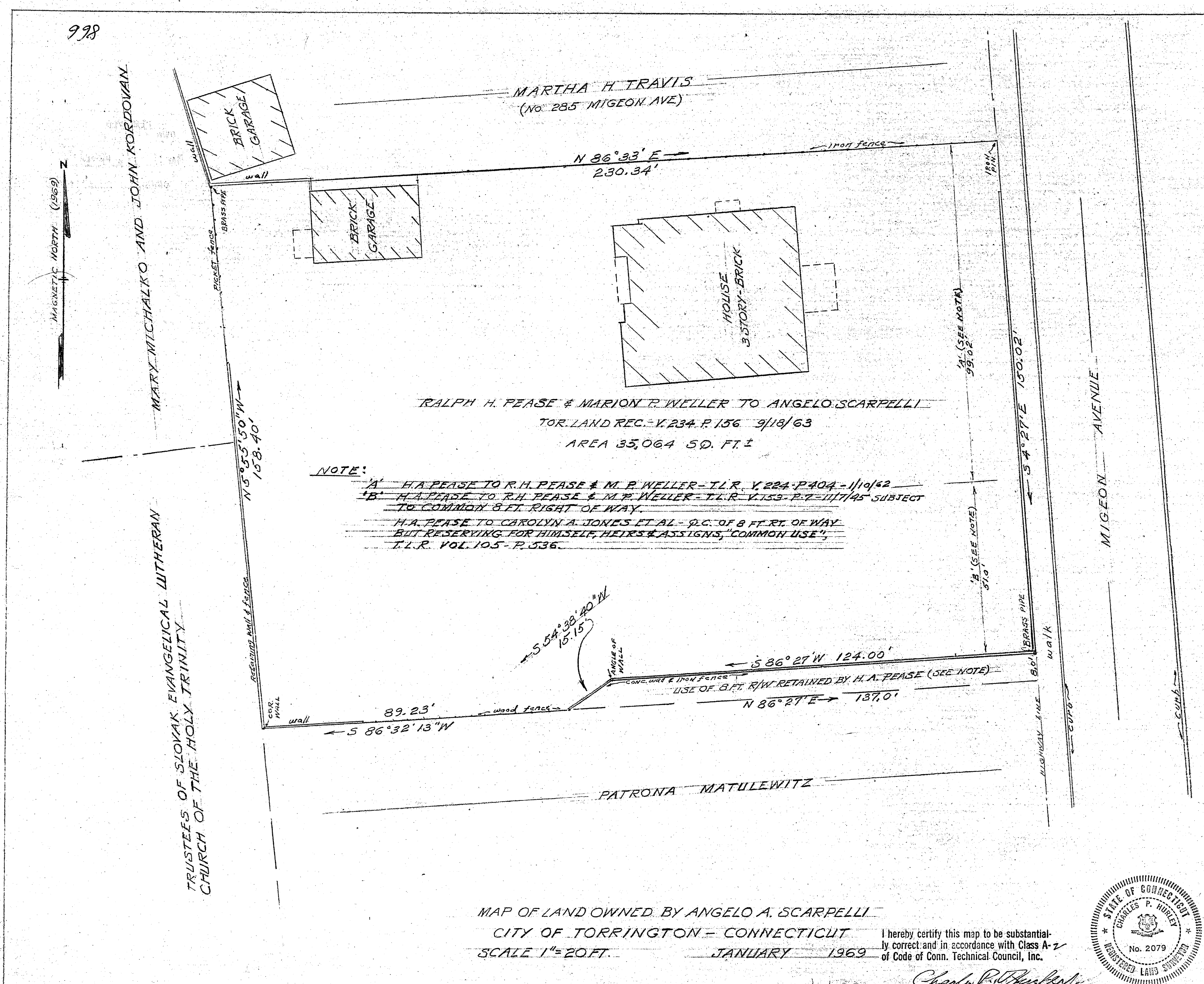
DRAWING NUMBER

866

PLAN HOLD CORPORATION • IRVINE, CALIFORNIA  
REORDER BY NUMBER 075AR

DRAWING NUMBER

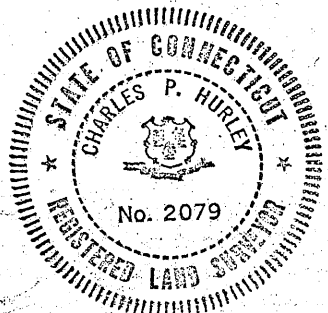
PLAN HOLD CORPORATION • IRVINE, CALIFORNIA  
REORDER BY NUMBER 075AR



MAP OF LAND OWNED BY ANGELO A. SCARPELLI  
CITY OF TORRINGTON - CONNECTICUT  
SCALE 1" = 20 FT. JANUARY 1969

I hereby certify this map to be substantially correct and in accordance with Class A-2 of Code of Conn. Technical Council, Inc.

Charles P. Hurley  
P. E. & L. S. No. 2079



Received May 12, 1969 by Earl P. ... Town Clerk

866