

SURVEY NOTES

- THIS SURVEY HAS BEEN PREPARED PURSUANT TO THE REGULATIONS OF CONNECTICUT STATE AGENCIES SECTIONS 20-300B-1 THROUGH 20-300B-20 AND THE "STANDARDS FOR SURVEYS AND MAPS IN THE STATE OF CONNECTICUT" AS ADOPTED FOR USE BY THE CONNECTICUT ASSOCIATION OF LAND SURVEYORS, INC. ON SEPTEMBER 26, 1996. IT IS A TOPOGRAPHIC SURVEY AND CONFORMS TO HORIZONTAL CLASS B AND TOPOGRAPHIC CLASS 1-2 ACCURACY STANDARDS. IT IS INTENDED TO BE USED FOR A STORMWATER SYSTEM DESIGN.
- NORTH ORIENTATION DEPICTED HEREON IS APPROXIMATE NORTH AMERICAN DATUM 1983 (NAD83) BASED UPON GLOBAL POSITIONING SYSTEM OBSERVATIONS, OBSERVED ON NOVEMBER 7, 2018.
- VERTICAL DATUM DEPICTED HERE ON IS APPROXIMATE NORTH AMERICAN VERTICAL DATUM 1988 (NAV88) BASED GLOBAL POSITIONING SYSTEM OBSERVATIONS USING GEOID12A ON NOVEMBER 7, 2018.
- THE LOCATIONS OF UNDERGROUND UTILITIES AS SHOWN HEREON ARE BASED ON THE LOCATION OF ABOVE GROUND STRUCTURES AND RECORD DRAWINGS PROVIDED BY OTHERS. NO EXCAVATIONS WERE MADE DURING THE PROGRESS OF THIS SURVEY TO LOCATE BURIED UTILITIES/STRUCTURES. ALL SUBTERRANEAN FEATURES AND IMPROVEMENTS MAY NOT BE DEPICTED OR NOTED HEREON. THE LOCATIONS OF UNDERGROUND UTILITIES/STRUCTURES MAY VARY FROM LOCATIONS SHOWN HEREON. ADDITIONAL BURIED UTILITIES/STRUCTURES MAY BE ENCOUNTERED. CONTACT "CALL BEFORE YOU DIG" AT LEAST 48 HOURS PRIOR TO ANY EXCAVATION OPERATIONS.
- THE FIELD SURVEY WAS COMPLETED ON NOVEMBER 7, 2018, LAND RECORD AND RELATED RESEARCH WAS COMPLETED IN NOVEMBER 2018.

REFERENCE MAPS

- SUBDIVISION, DOUGLAS W. & DONNA BROWN, VOLUNTOWN AND STERLING, CONNECTICUT, SCALE: 1"=20', DATED: JANUARY 1984, MAP FILE #86.
- LOT RECONFIGURATION SURVEY, PREPARED FOR BRUCE & DEBORAH MAYNARD, CONGDON ROAD, VOLUNTOWN, CONNECTICUT, SCALE: 1"=20', DATED: MAY 2017, LAST REVISED: MARCH 1, 2018, MAP FILE #449, PREPARED BY: ERIC SEITZ.

DEEP TEST PIT RESULTS

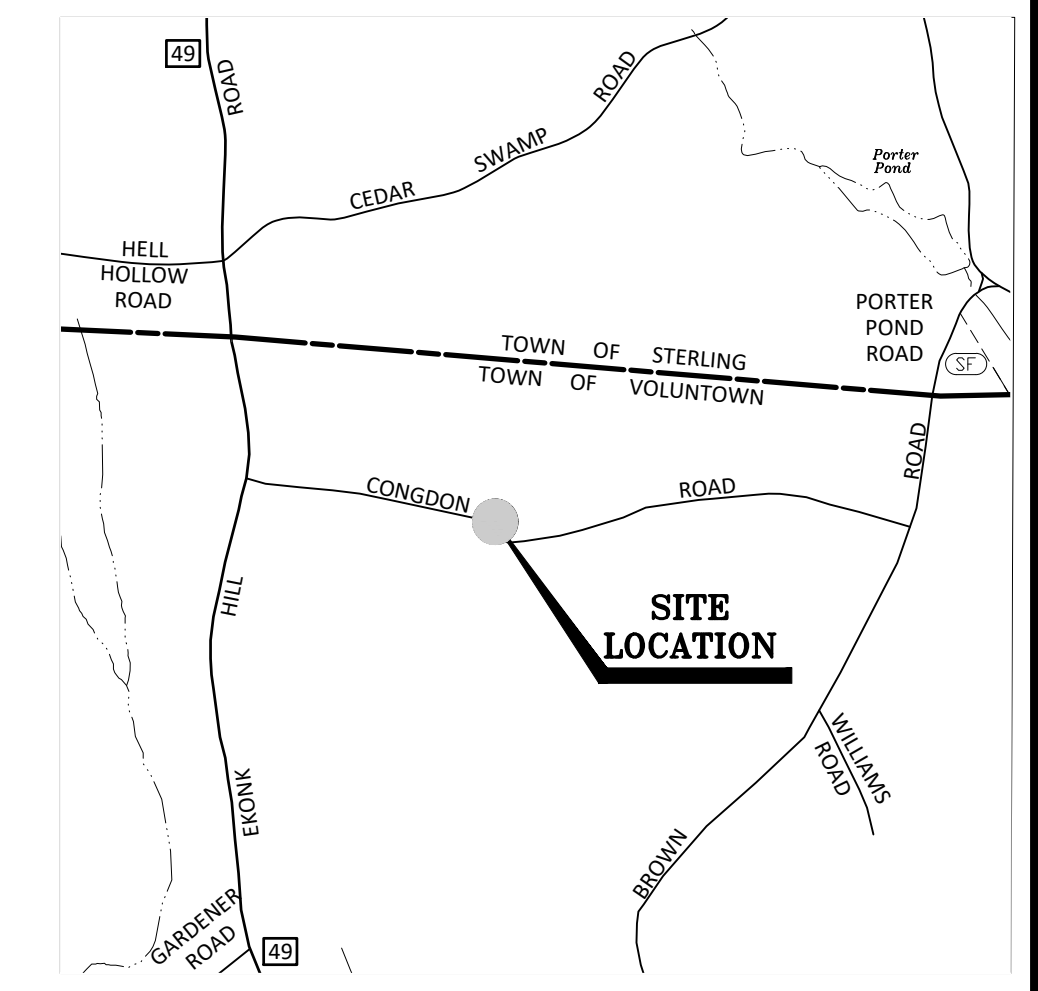
DEEP TEST PITS WERE WITNESSED AND RECORDED BY DEMIAN A. SORRENTINO, C.S.S. OF BOUNDARIES LLC ON 12/3/18. (NOTE: 0.62" OF RAIN ON 12/2/18 CAUSING ELEVATED GW)

TP#1
 0 - 16" DARK BROWN TOPSOIL
 16 - 37" BROWN MEDIUM SANDY LOAM
 37 - 96" GRAY FINE SILTY SAND (HEAVY REDOX)
 NO LEDGE, REDOX @ 37", GROUNDWATER SEEP @ 26"

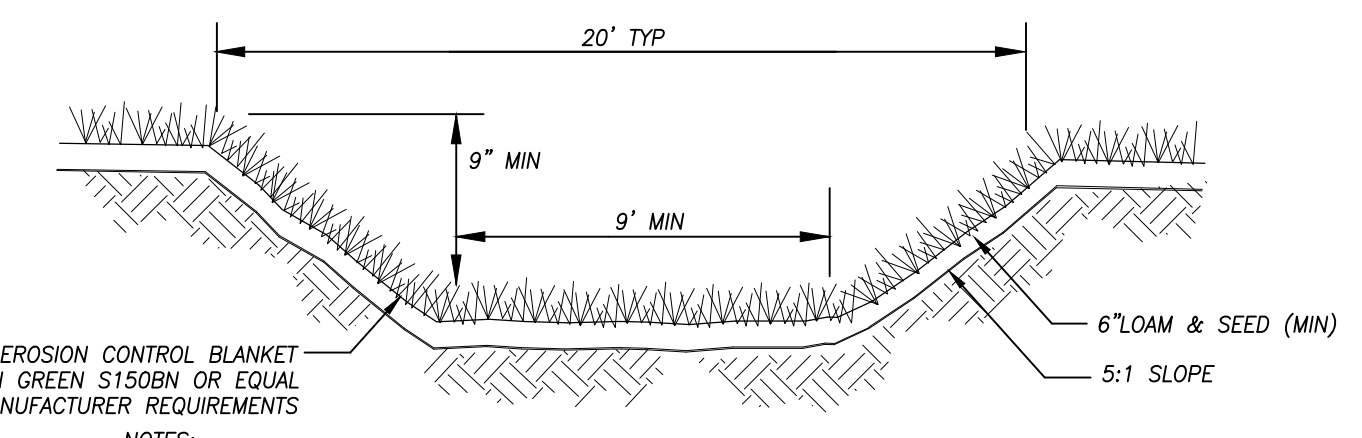
TP#2
 0 - 14" DARK BROWN TOPSOIL
 14 - 37" BROWN MEDIUM SANDY LOAM
 37 - 72" GRAY FINE SILTY SAND (HEAVY REDOX)
 NO LEDGE, REDOX @ 37", GROUNDWATER SEEP @ 27"

LEGEND & ABBREVIATIONS

- ± MORE OR LESS
- TYP TYPICAL
- PVC POLYVINYL CHLORIDE
- CMP CORRUGATED METAL PIPE
- RCP REINFORCED CONCRETE PIPE
- HDPE HIGH DENSITY POLYETHYLENE PIPE
- S.F. SQUARE FEET
- CB CATCH BASIN
- TF TOP OF FRAME
- INV INVERT
- MB MAILBOX
- W/ WITH
- W/F WOOD FRAME
- WF #1 WETLAND FLAG
- REC RECOVERED
- EVS EVERSOURCE
- CL&P CONNECTICUT LIGHT AND POWER
- N/F NOW OR FORMERLY
- x 200.0 EXISTING SPOT ELEVATION
- x 200.0 PROPOSED SPOT ELEVATION
- 320 — EXISTING CONTOUR
- 320 — PROPOSED CONTOUR
- TREE LINE
- PROPOSED TREE LINE
- STONEWALL
- STONEWALL REMAINS
- HEAD WIRES
- ANGLE POINT
- IRON PIN
- FENCE POST
- UTILITY POLE
- GUY WIRE
- CATCH BASIN
- SIGN
- △ WETLAND FLAG
- TEST HOLE

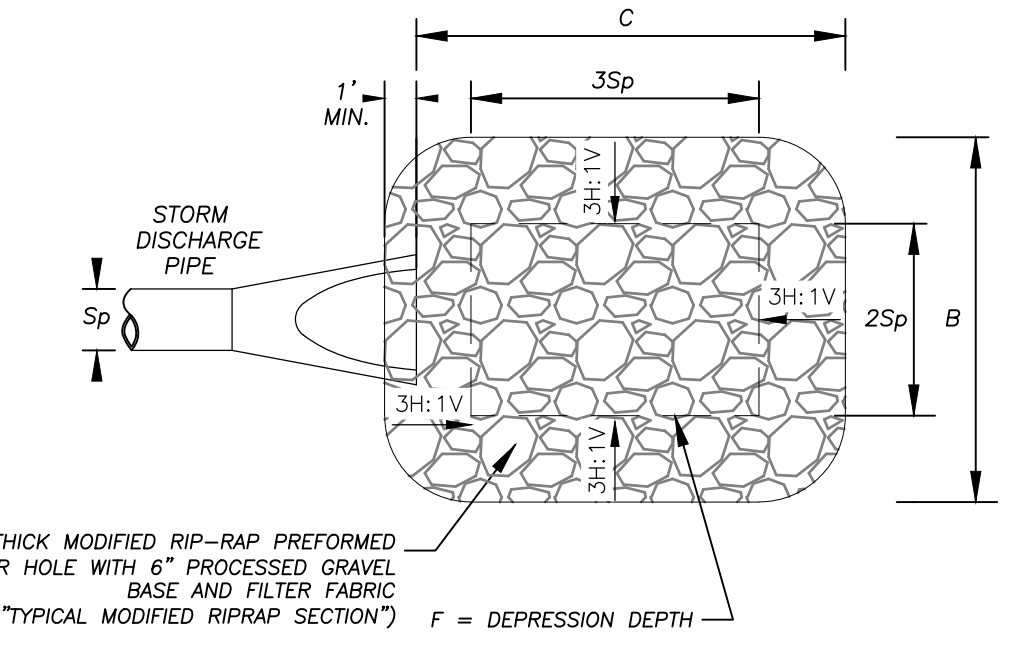


LOCATION MAP
SCALE: 1"=1000'



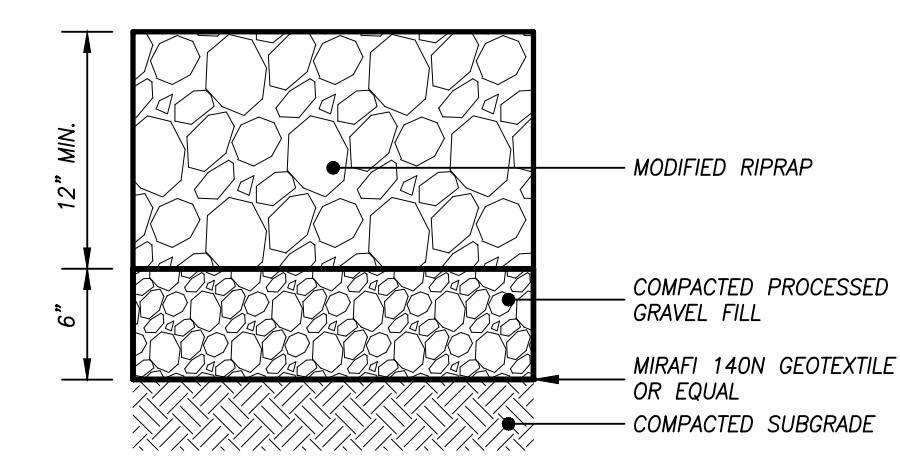
- NOTES:**
- SEE PLAN FOR DESIGN ELEVATIONS.
 - SEED MIX SHALL BE 48% CREEPING RED FESCUE, 4% REDTOP, AND 48% TALL FESCUE (SEED MIX 2, FIGURE PS-3, 2002 CT GUIDELINES FOR SOIL EROSION AND SEDIMENT CONTROL). SEED RATE SHALL BE 1.05 POUNDS PER 1,000 SQUARE FEET OF DISTURBED AREA, SEEDED IN EACH DIRECTION (TOTAL OF 2.10 POUNDS PER 1,000 SQUARE FEET OF DISTURBED AREA).

VEGETATED SWALE DETAIL
NOT TO SCALE



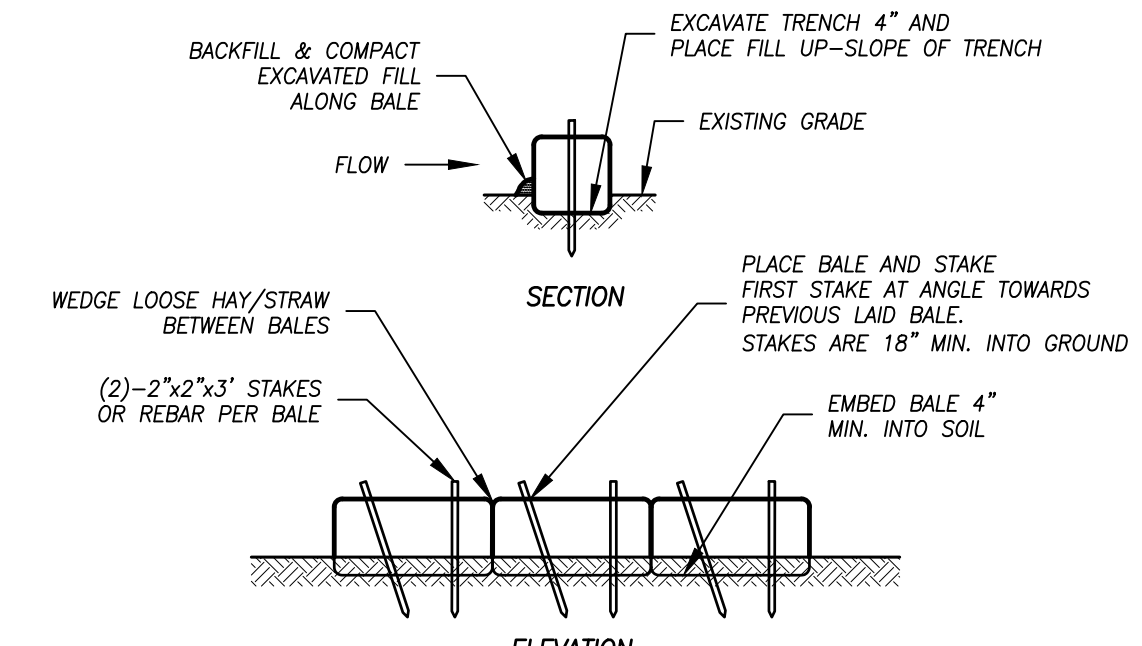
PIPE Sp	C	B	F	RIPRAP GRADATION
18"	9 FT	7.5 FT	9 IN	MODIFIED

TYPE 1 RIPRAP SCOUR HOLE DETAIL
NOT TO SCALE

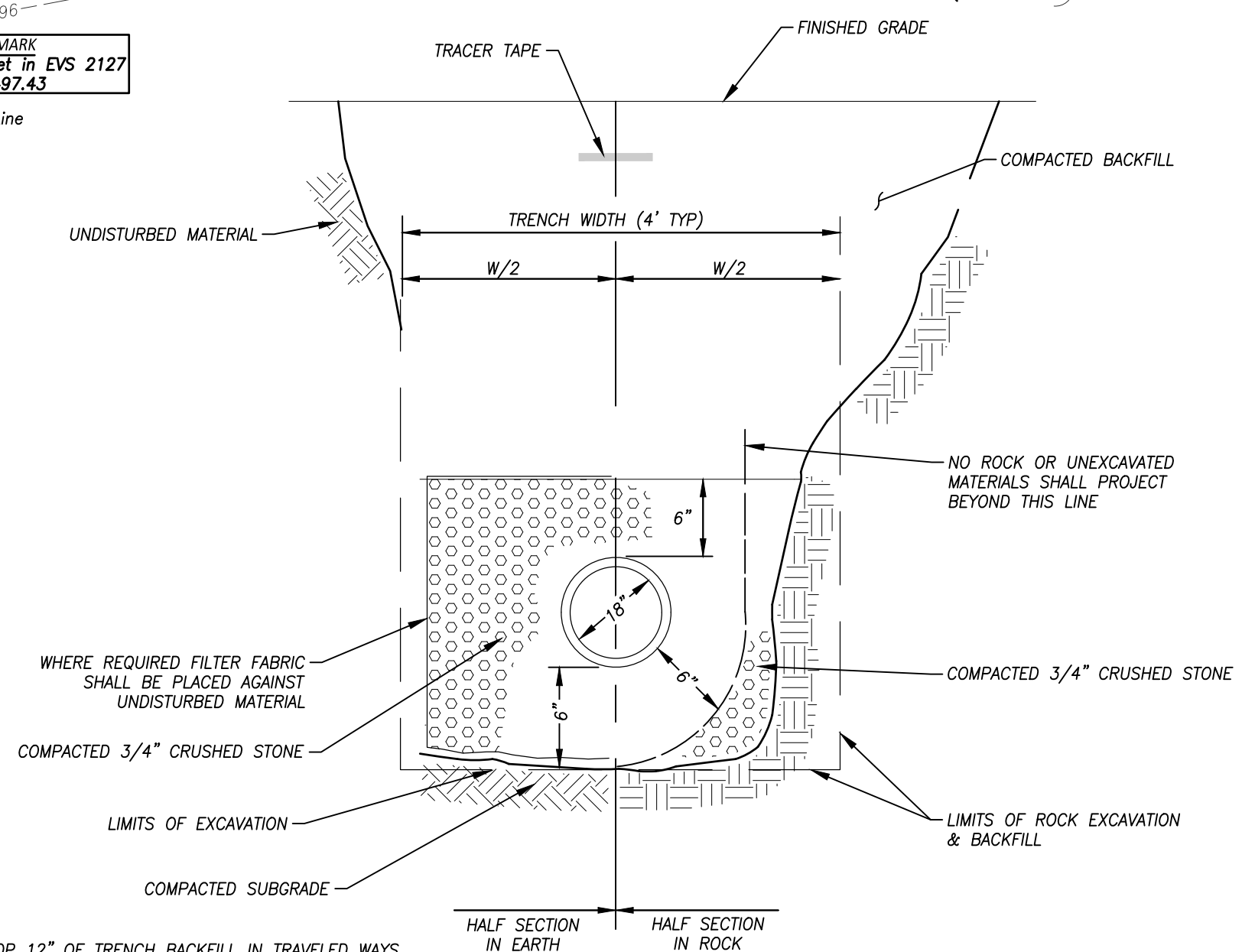


TYPICAL MODIFIED RIP RAP SECTION
NOT TO SCALE

- NOTES:**
- TO BE USED AT PIPE DISCHARGES.



HAY/STRAW BALE BARRIER DETAIL
NOT TO SCALE

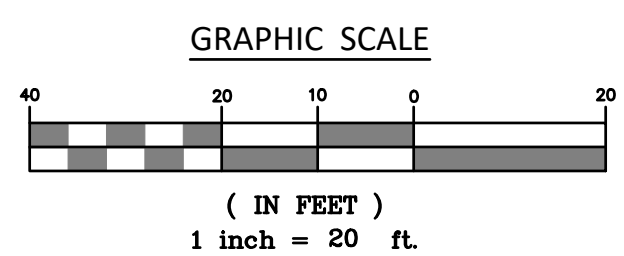
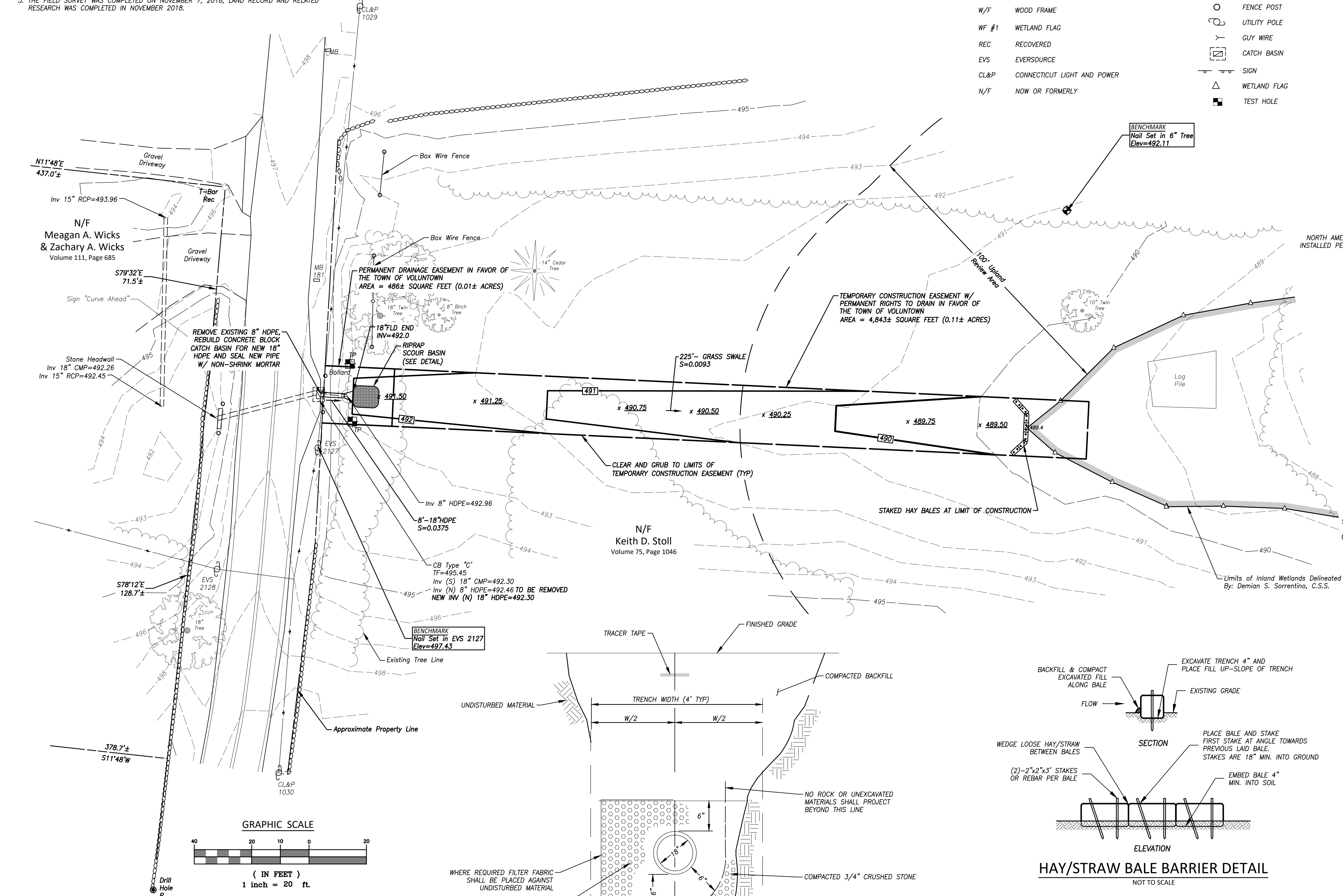


TRENCH DETAIL (STORM DRAINAGE)
NOT TO SCALE

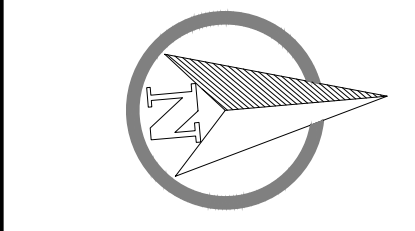
- NOTES:**
- THE TOP 12" OF TRENCH BACKFILL IN TRAVELED WAYS SHALL BE COMPACTED PROCESSED GRAVEL.

I HAVE CONDUCTED AN ON-SITE SOIL INVESTIGATION OF THE PARCEL OF LAND DEPICTED HEREON. THE INTERMITTENT WATERCOURSES AND INLAND WETLAND BOUNDARIES AS PORTRAYED ARE AN ACCURATE REPRESENTATION OF THE DELINEATION PERFORMED IN THE FIELD.

"TO MY KNOWLEDGE AND BELIEF THIS MAP IS SUBSTANTIALLY CORRECT AS NOTED HEREON."



I:\192_168.2.3\PROJECTS\CIVIL 3D PROJECTS\2018\18-2633 TOY-CONGDON ROAD\DWG\DESIGN\SITE PLAN REVA.DWG

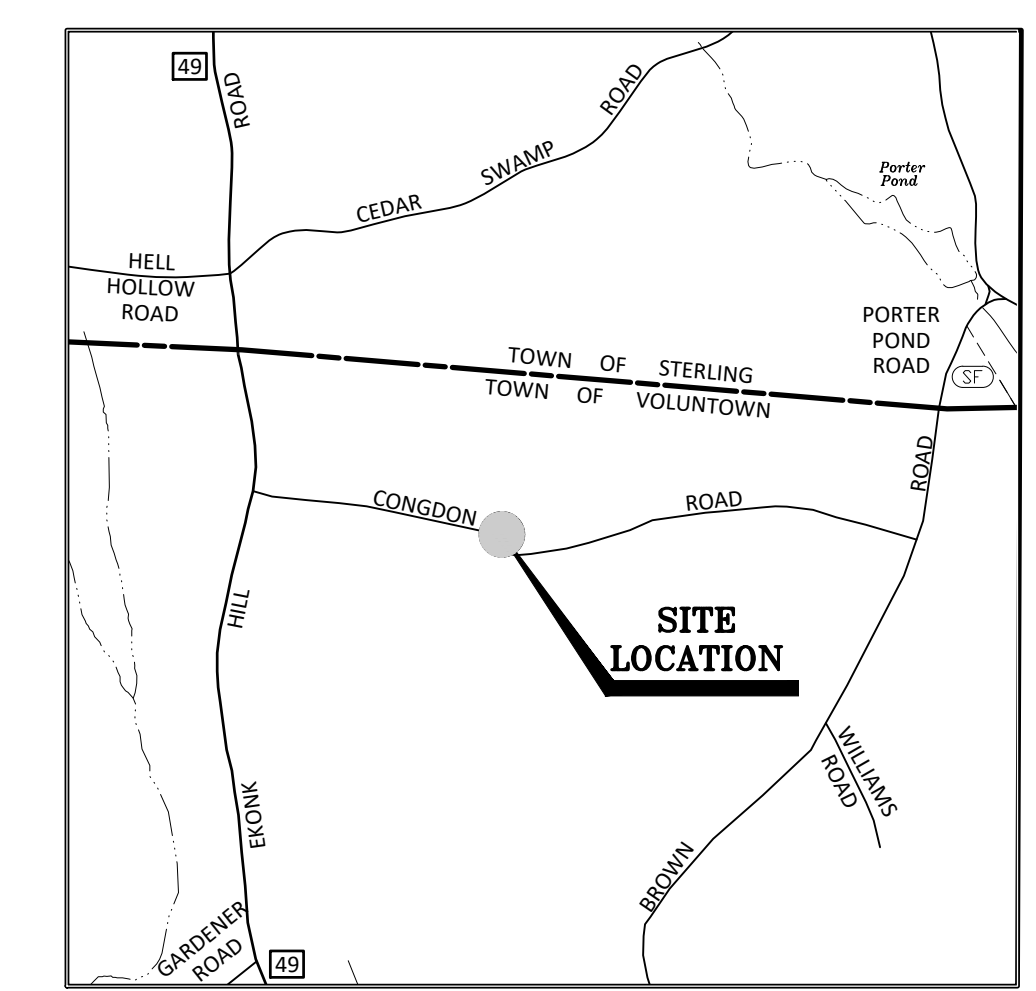


DEEP TEST PIT RESULTS

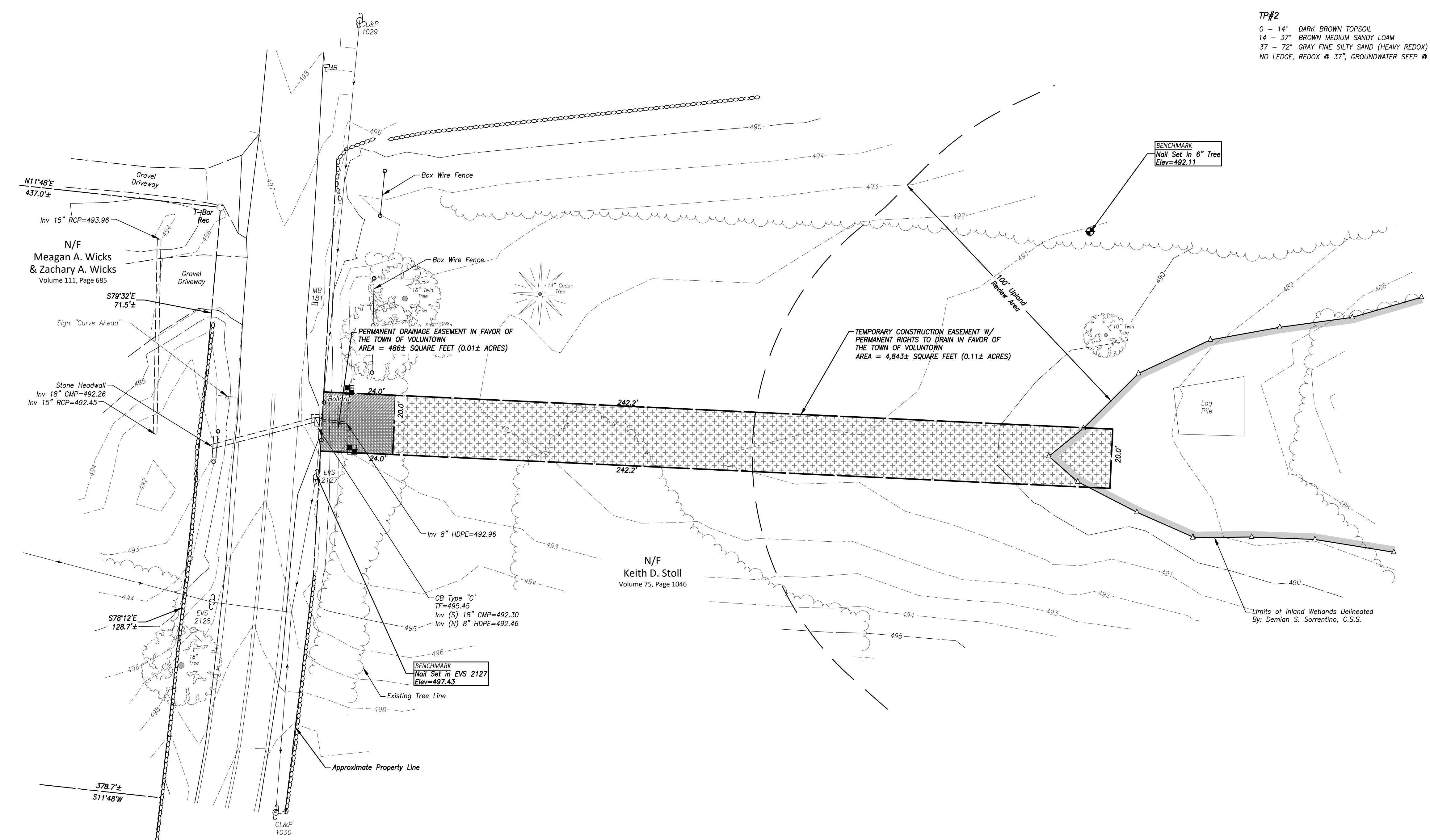
DEEP TEST PITS WERE WITNESSED AND RECORDED BY DEMIAN A. SORRENTINO, C.S.S. OF BOUNDARIES LLC ON 12/31/18.
 (NOTE: 0.62" OF RAIN ON 12/2/18 CAUSING ELEVATED GW)

TP#1
 0 - 16" DARK BROWN TOPSOIL
 16 - 37" BROWN MEDIUM SANDY LOAM
 37 - 96" GRAY FINE SILTY SAND (HEAVY REDOX)
 NO LEDGE, REDOX @ 37", GROUNDWATER SEEP @ 26"

TP#2
 0 - 14" DARK BROWN TOPSOIL
 14 - 37" BROWN MEDIUM SANDY LOAM
 37 - 72" GRAY FINE SILTY SAND (HEAVY REDOX)
 NO LEDGE, REDOX @ 37", GROUNDWATER SEEP @ 27"



LOCATION MAP
 SCALE: 1"=1000'



SURVEY NOTES

- THIS SURVEY HAS BEEN PREPARED PURSUANT TO THE REGULATIONS OF CONNECTICUT STATE AGENCIES SECTIONS 20-300B-1 THROUGH 20-300B-20 AND THE "STANDARDS FOR SURVEYS AND MAPS IN THE STATE OF CONNECTICUT" AS ADOPTED FOR USE BY THE CONNECTICUT ASSOCIATION OF LAND SURVEYORS, INC. ON SEPTEMBER 26, 1996. IT IS A TOPOGRAPHIC SURVEY AND CONFORMS TO HORIZONTAL CLASS B AND TOPOGRAPHIC CLASS T-2 ACCURACY STANDARDS. IT IS INTENDED TO BE USED FOR A STORMWATER SYSTEM DESIGN.
- NORTH ORIENTATION DEPICTED HEREON IS APPROXIMATE NORTH AMERICAN DATUM 1983 (NAD83) BASED UPON GLOBAL POSITIONING SYSTEM OBSERVATIONS, OBSERVED ON NOVEMBER 7, 2018.
- VERTICAL DATUM DEPICTED HEREON IS APPROXIMATE NORTH AMERICAN VERTICAL DATUM 1988 (NAVD88) BASED UPON GLOBAL POSITIONING SYSTEM OBSERVATIONS USING GEODE12A ON NOVEMBER 7, 2018.
- THE LOCATIONS OF UNDERGROUND UTILITIES AS SHOWN HEREON ARE BASED ON THE LOCATION OF ABOVE GROUND STRUCTURES AND RECORD DRAWINGS PROVIDED BY OTHERS. NO EXCAVATIONS WERE MADE DURING THE PROCESS OF THIS SURVEY TO LOCATE BURIED UTILITIES/STRUCTURES. ALL SUBTERRANEAN FEATURES AND IMPROVEMENTS MAY NOT BE DEPICTED OR NOTED HEREON. THE LOCATIONS OF UNDERGROUND UTILITIES/STRUCTURES MAY VARY FROM LOCATIONS SHOWN HEREON. ADDITIONAL BURIED UTILITIES/STRUCTURES MAY BE ENCOUNTERED. CONTACT "CALL BEFORE YOU DIG" AT LEAST 48 HOURS PRIOR TO ANY EXCAVATION OPERATIONS.
- THE FIELD SURVEY WAS COMPLETED ON NOVEMBER 7, 2018, LAND RECORD AND RELATED RESEARCH WAS COMPLETED IN NOVEMBER 2018.

REFERENCE MAPS

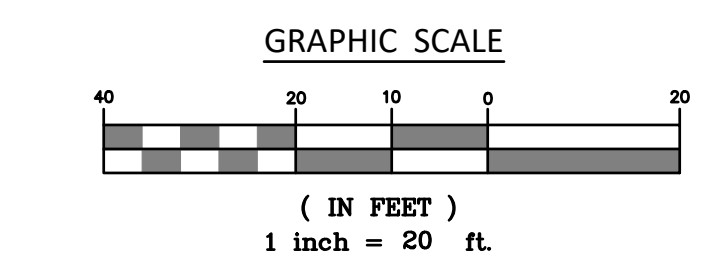
- SUBDIVISION, DOUGLAS W. & DONNA BROWN, VOLUNTOWN AND STERLING, CONNECTICUT, SCALE: 1"=20', DATED: JANUARY 1984, MAP FILE #86.
- LOT RECONFIGURATION SURVEY, PREPARED FOR BRUCE & DEBORAH MAYNARD, CONGDON ROAD, VOLUNTOWN, CONNECTICUT, SCALE: 1"=20', DATED: MAY 2017, LAST REVISED: MARCH 1, 2018, MAP FILE #449, PREPARED BY: ERIC SEITZ.

LEGEND & ABBREVIATIONS

±	MORE OR LESS	x 200.0	EXISTING SPOT ELEVATION
TYP	TYPICAL	x 200.0	PROPOSED SPOT ELEVATION
PVC	POLYVINYL CHLORIDE	— 320 —	EXISTING CONTOUR
CMP	CORRUGATED METAL PIPE	— [320] —	PROPOSED CONTOUR
RCP	REINFORCED CONCRETE PIPE	— () —	TREE LINE
HDPE	HIGH DENSITY POLYETHYLENE PIPE	— () —	PROPOSED TREE LINE
S.F.	SQUARE FEET	— [] —	STONEMASS
CB	CATCH BASIN	— [] —	STONEMASS REMAINS
TF	TOP OF FRAME	— [] —	OVERHEAD WIRES
INV	INVERT	●	ANGLE POINT
MB	MAILBOX	○	IRON PIN
W/	WITH	⊙	DRILL HOLE
W/F	WOOD FRAME	○	FENCE POST
WF #1	WETLAND FLAG	○	UTILITY POLE
REC	RECOVERED	—	GUY WIRE
EVS	EVERSOURCE	— [] —	CATCH BASIN
CL&P	CONNECTICUT LIGHT AND POWER	— [] —	SIGN
N/F	NOW OR FORMERLY	△	WETLAND FLAG
		■	TEST HOLE

I HAVE CONDUCTED AN ON-SITE SOIL INVESTIGATION OF THE PARCEL OF LAND DEPICTED HEREON. THE INTERMITTENT WATERCOURSES AND INLAND WETLAND BOUNDARIES AS PORTRAYED ARE AN ACCURATE REPRESENTATION OF THE DELINEATION PERFORMED IN THE FIELD.

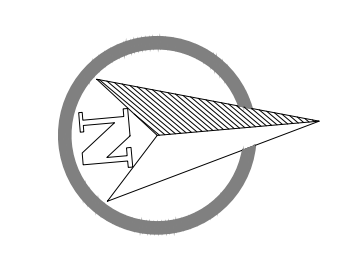
DEMIAN A. SORRENTINO, C.S.S. DATE



"TO MY KNOWLEDGE AND BELIEF THIS MAP IS SUBSTANTIALLY CORRECT AS NOTED HEREON."

JOHN U. FAULISE JR. L.S. LICENSE NO. DATE

Drainage Improvement Plans
 Proposed Easement Plan
 Prepared for
 The Town of Voluntown
 Congdon Road, Voluntown, Connecticut



SCALE:	1" = 20'
DATE:	December 2018
JOB I.D. NO.:	18-2633
Revisions	
Rev. A - Issued for Bidding - 5/13/2020	
SHEET NO.	
2	
2	

I:\192_168.2.3\PROJECTS\CIVIL 3D PROJECTS\2018\18-2633 TOV-CONGDON ROAD\DWG\DESIGN\SITE PLAN REVA.DWG